

### STRAIGHT SQUARE FLANGE JACKS CLAMP TYPE FOR FLEXIBLE CABLES

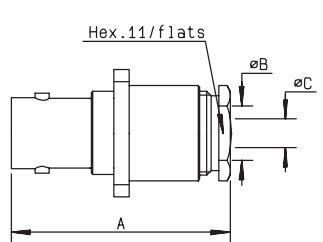


Fig. 1

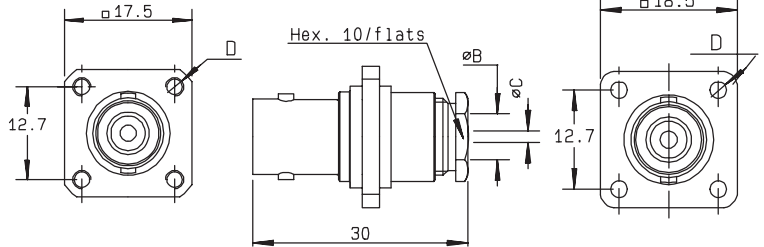


Fig. 2

cable	part number	fig.	dimensions				captive center contact	assembly	cut out	note
			A	B	C	D				
2 /50/ S+ D	R141 253 000	1	29.5	2.2	0.6	3-56-UNF-2B	yes	M02	P01	
2.6 /50/ S+ D	R141 254 000*	1	29.5	3.1	0.6	3-56-UNF-2B	yes	M02	P01	
2.6 /50/ S+ D	R141 278 000	1	29.5	3.1	0.6	2.7	yes	M02	P01	
2.6 /50/ S+ D	R141 277 000	2		3	0.6	2.6	yes	M02	P02	insulated flange
5 /50/ S+ D	R141 258 000	1	30	5.6	1.05	3-56-UNF-2B	no	M01	P01	
5 /50/ S+ D	R141 259 000●	1	30	5.6	1.05	2.6	no	M01	P01	
5 /50/ S+ D	R141 256 000	2		5.6	1.05	2.6	no	M03	P02	insulated flange

### STRAIGHT SQUARE FLANGE JACKS FULL CRIMP TYPE FOR FLEXIBLE CABLES

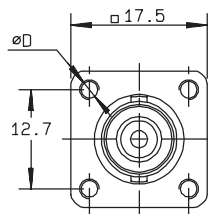


Fig. 1

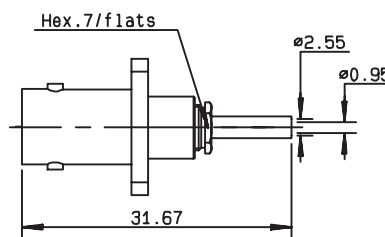


Fig. 2

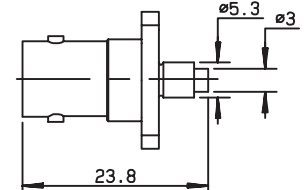


Fig. 3

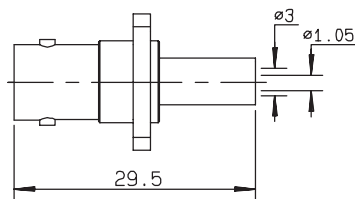


Fig. 4

cable	part number	fig.	captive center contact	assembly	cut out	note
2 /50/ S	R141 285 000●	1	yes	M13	P03	
2.6 /50/ S	R141 290 200●	2	yes	M12	P04	reverse crimping
5 /50/ S	R141 292 000	3	yes	M07	P01	single piece body
5 /50/ D	R141 297 000	4	yes	M08	P01	

For others types of cables (75Ω, 93Ω or BT cables), please see "additional connectors" on page 36-37.

● Upon request

\* Packaging = 100 pieces.