

**SPECIFICATIONS**

**Mechanical**

**Connector Mating Force** : 6.00 Kg max.  
**Connector Unmating Force** : 4.50 Kg max.  
**Durability** : 5,000 Cycles

**Electrical**

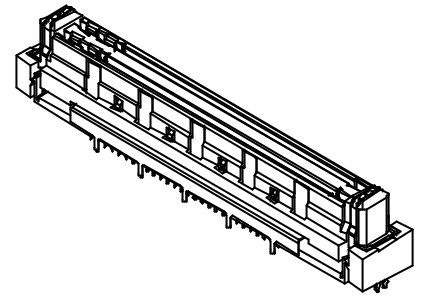
**Voltage Rating**: 150V  
**Current Rating**: 0.5A  
**Contact Resistance**: Initial 100mW max., R 25mW max.  
**Dielectric Withstanding Voltage**: 500V AC/1 min.  
**Insulation Resistance**: 100MW

**Physical**

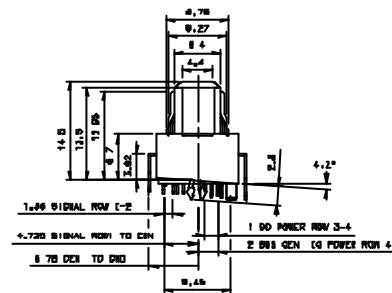
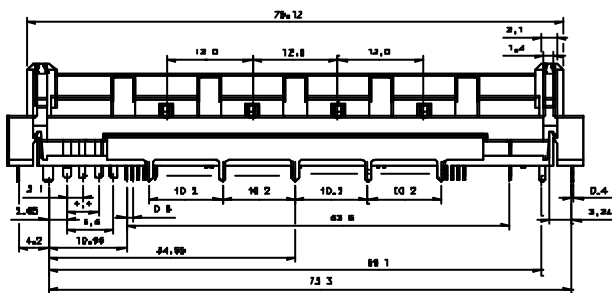
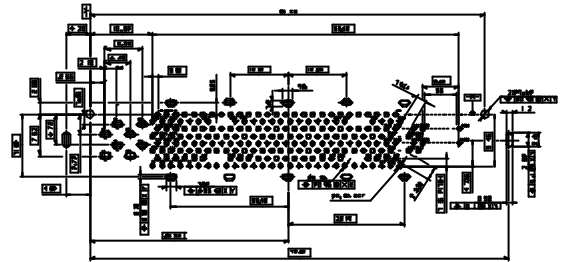
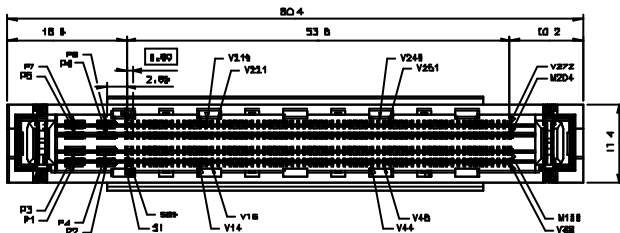
**Housing**: Thermoplastic, UL 94V-0 rated in Black Color  
**Contact**: Copper alloy  
**Plating**: See "ORDERING INFORMATION"  
**Metal Spring & Solder Pad**: Copper alloy  
**Operating Temperature**: -55 to +85

**Docking Connector**

**QL Series**  
**Vertical, T/H, Recep. Type**  
**0.80mm Pitch**  
**280Pos.**



**DRAWING**



**ORDERING INFORMATION**

**PRODUCT NO. : QL01703-C4B3(-5F)**

QL=Family Code  
Terminal Type  
0=Vertical  
Contact Type  
1=Receptacle  
No. of Contact Position  
70=70 Pos/Row, Total 280 Pos.

Packing Code  
Blank=Soft Tray  
5F=Soft Tray & Pt-Film & Lead Free  
Extension Code  
4=Parallel 4 Rows  
C=0.80mm Pitch  
Contact Area Plating  
3=30u" Gold