

Leadless Power Inductors H·DI-1240 Series

[RoHS Compliant]

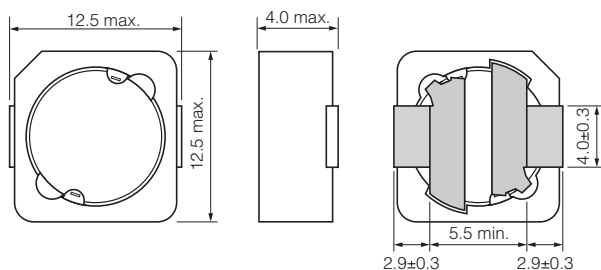


● H·DI-1240 Series

| Model | Inductance at 10kHz, 1mA (μ H) | DC resistance (Ω) max. | Rated current (A) |
|---------------|-------------------------------------|---------------------------------|-------------------|
| H·DI-1240-2R2 | 2.2 \pm 25% | 0.017 | 5.10 |
| H·DI-1240-3R3 | 3.3 \pm 25% | 0.023 | 4.60 |
| H·DI-1240-4R7 | 4.7 \pm 25% | 0.026 | 4.30 |
| H·DI-1240-6R8 | 6.8 \pm 25% | 0.033 | 3.90 |
| H·DI-1240-100 | 10 \pm 25% | 0.039 | 3.50 |
| H·DI-1240-150 | 15 \pm 25% | 0.060 | 2.90 |
| H·DI-1240-220 | 22 \pm 25% | 0.075 | 2.40 |
| H·DI-1240-330 | 33 \pm 25% | 0.12 | 1.90 |
| H·DI-1240-470 | 47 \pm 20% | 0.18 | 1.60 |
| H·DI-1240-680 | 68 \pm 20% | 0.24 | 1.40 |
| H·DI-1240-101 | 100 \pm 20% | 0.30 | 1.10 |
| H·DI-1240-151 | 150 \pm 20% | 0.50 | 0.90 |
| H·DI-1240-221 | 220 \pm 20% | 0.74 | 0.75 |
| H·DI-1240-331 | 330 \pm 20% | 1.1 | 0.60 |
| H·DI-1240-471 | 470 \pm 20% | 1.6 | 0.50 |
| H·DI-1240-681 | 680 \pm 20% | 2.5 | 0.40 |
| H·DI-1240-102 | 1000 \pm 20% | 3.7 | 0.35 |

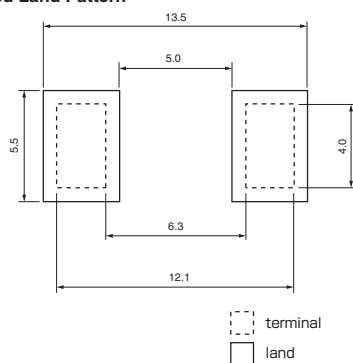
● Operating temperature range: -20 to +105°C (including self-temperature rise)

Shape and Dimensions



[mm]

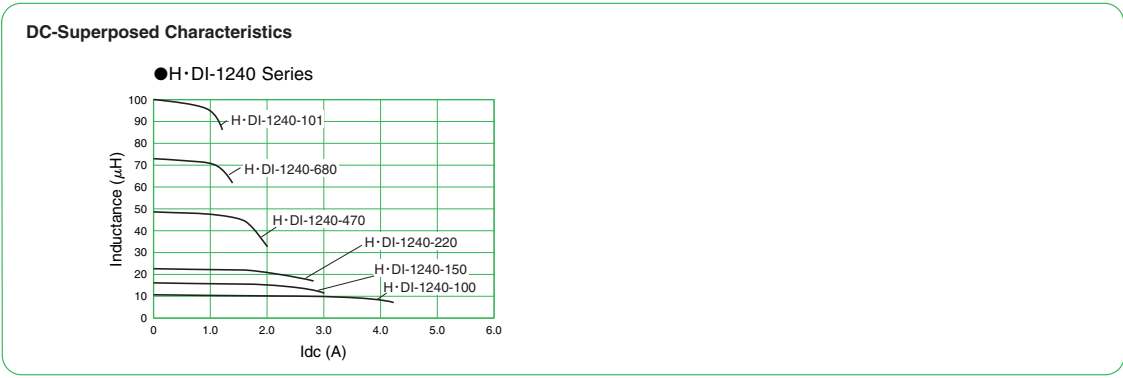
Recommended Land Pattern



[mm]

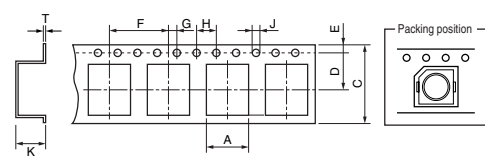


- All specifications in this catalog and production status of products are subject to change without notice. Prior to the purchase, please contact NEC TOKIN for updated product data.
- Please request for a specification sheet for detailed product data prior to the purchase.
- Before using the product in this catalog, please read "Precautions" and other safety precautions listed in the printed version catalog.



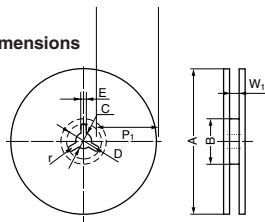
H•DI-1240 Series (500pcs./reel)

Dimensions of indented square hole plastic tape



| | | | | | | | | | | | [mm] |
|-------|-------|-------|-------|-------|-------|--------|-------|---------|-------|--------|------|
| A | B | C | D | E | F | G | H | J | K | t | |
| ± 0.1 | ± 0.1 | ± 0.3 | ± 0.1 | ± 0.1 | ± 0.1 | ± 0.05 | ± 0.1 | +0.1,-0 | ± 0.1 | ± 0.05 | |
| 12.6 | 12.6 | 24 | 11.5 | 1.75 | 16 | 2.0 | 4.0 | ∅1.5 | 4.2 | 0.4 | |

Reel dimensions



| | | | | | | | | [mm] |
|------|------|------|------|------|------|----------------|----------------|------|
| A | B | C | D | E | r | W ₁ | W ₂ | |
| ±2.0 | ±5.0 | ±0.5 | ±1.0 | ±0.5 | | ±2.0, -0 | ±1.0 | |
| 330 | 80 | 13 | 21 | 2.0 | R1.0 | 24.4 | 27.4 | |



- All specifications in this catalog and production status of products are subject to change without notice. Prior to the purchase, please contact NEC TOKIN for updated product data.
- Please request for a specification sheet for detailed product data prior to the purchase.
- Before using the product in this catalog, please read "Precautions" and other safety precautions listed in the printed version catalog.