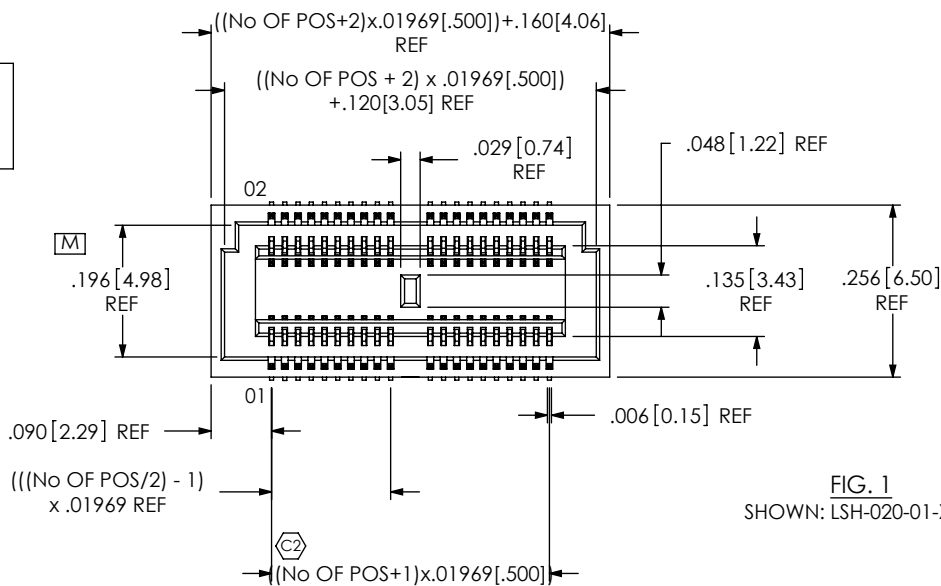


DO NOT SCALE FROM THIS PRINT



**LSH-XXX-01-X-D-A-XX**

No OF POSITIONS  
 -010, -020, -030, -040, -050,  
 (PER ROW)

LEAD STYLE  
 -01: SURFACE MOUNT  
 (USE C-135-01-X)

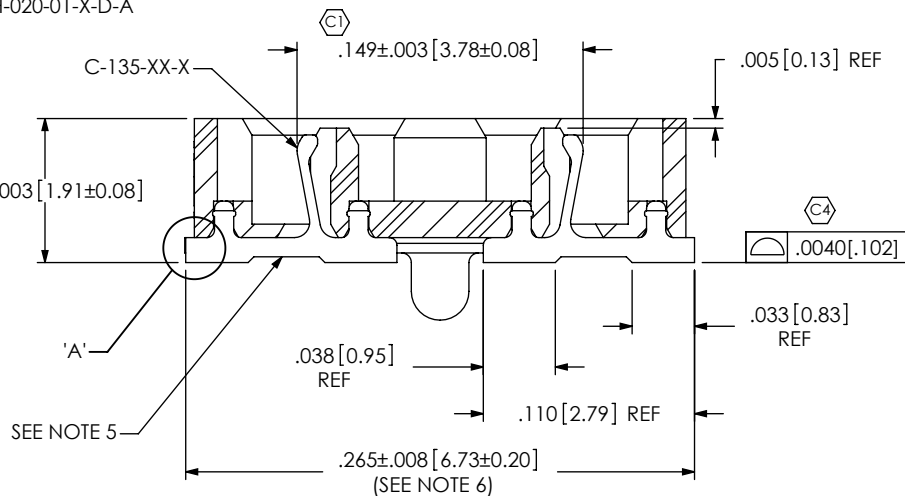
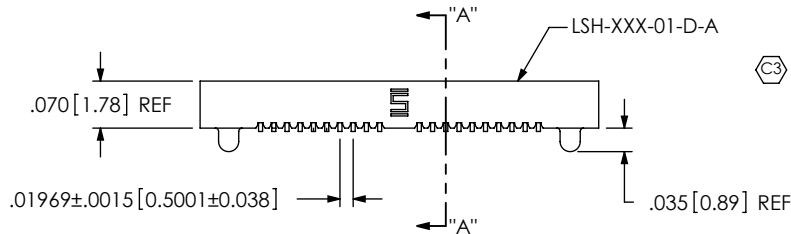
PLATING SPECIFICATION  
 -G: GOLD (USE C-135-01-G)  
 -H: HEAVY GOLD (USE C-135-01-H)

OPTIONS  
 -TR: TAPE AND REEL  
 -K: POLYAMIDE FILM PAD  
 (USE K-850-650, SEE FIG. 2)

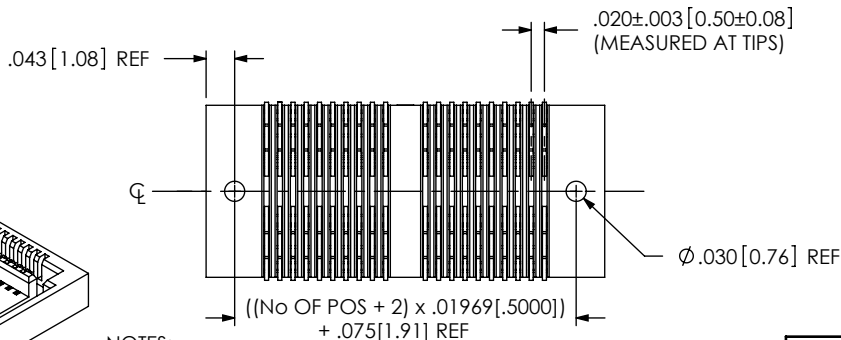
-A: ALIGNMENT PIN

ROW SPECIFICATION  
 -D: DOUBLE (USE LSH-XXX-01-D-A)

FIG. 1  
SHOWN: LSH-020-01-X-D-A



SECTION "A"- "A"  
SCALE 10:1



SHEAR TO  $.004[.10]$   
MAX BURR

DETAIL 'A'  
SCALE 20:1

NOTES:

1.  $\text{C}$  REPRESENTS A CRITICAL DIMENSION.
2. BURR ALLOWANCE:  $.001[.03]$  MAX.
3. MINIMUM PUSHOUT FORCE: 5 OZ.
4. ALL PART VARIATIONS TO BE PACKAGED IN A PT-1-24-01-97 TUBE WITH TWO TP-12 PLUGS PER TUBE EXCEPT -K OPTION WHICH WILL USE PT-1-24-02-23 AND TP-12.
5. CUT IN THIS AREA MUST BE BELOW SURFACE MOUNT LEADS.
6. MAX VARIATION BETWEEN ADJACENT CONTACTS TO BE  $.005[.13]$  MAX.
7. SAMTEC RECOMMENDS RIGHT-SIDE-UP, SINGLE PASS, 63/37 TIN LEAD REFLOW SOLDERING.
8. THIS PART IS NOT COMPATIBLE WITH LEAD FREE REFLOW SOLDERING.

UNLESS OTHERWISE SPECIFIED, DIMENSIONS ARE IN INCHES. TOLERANCES ARE:

DECIMALS	ANGLES
.XX: $\pm .01[.3]$	2°
.XXX: $\pm .005[.13]$	
.XXXX: $\pm .0020[.051]$	

**PROPRIETARY NOTE**  
THIS DOCUMENT CONTAINS INFORMATION CONFIDENTIAL AND PROPRIETARY TO SAMTEC, INC. AND SHALL NOT BE REPRODUCED OR TRANSFERRED TO OTHER DOCUMENTS OR DISCLOSED TO OTHERS OR USED FOR ANY PURPOSE OTHER THAN THAT WHICH IT WAS OBTAINED WITHOUT THE EXPRESSED WRITTEN CONSENT OF SAMTEC, INC.



520 PARK EAST BLVD, NEW ALBANY, IN 47150  
PHONE: 812-944-6733 FAX: 812-948-5047  
e-Mail: info@SAMTEC.com code: 55322

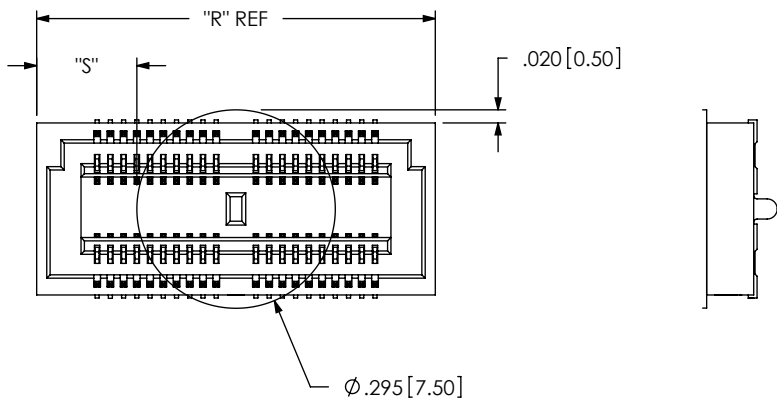
**MATERIAL:** DO NOT SCALE DRAWING SHEET SCALE: 3.5:1  
INSULATOR: LCP, COLOR: BLACK  
CONTACT: BeCu

**DESCRIPTION:**  
**.5mm DOUBLE ROW SOCKET ASSEMBLY**

DWG. NO. **LSH-XXX-01-X-D-A-XX**

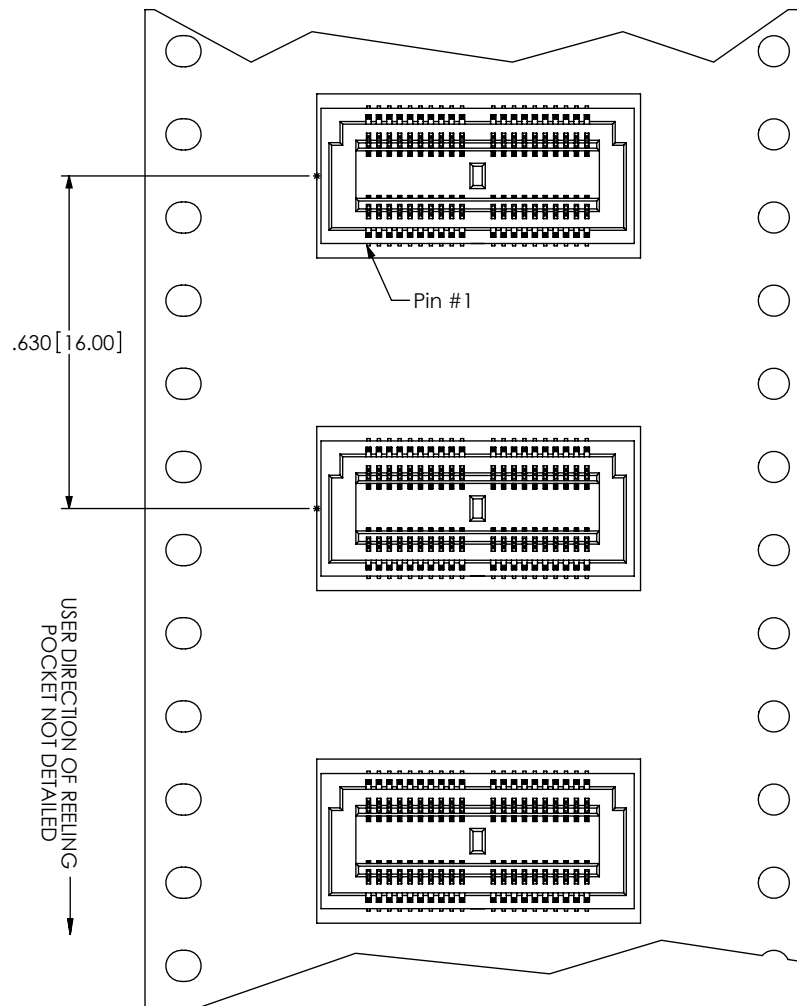
BY: ERIC M 7/1/99 SHEET 1 OF 2

FIG. 2  
-K: POLYAMIDE FILM PAD  
[USE K-850-650]

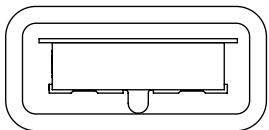


NOTE: "R" = ((No OF POSITIONS + 2) x .01969[.5000]) + .160[4.06]  
"S" = (("R" - .295[7.50]) / 2) ± .020[.51]

-TR: TAPE & REEL VIEW PACKAGING

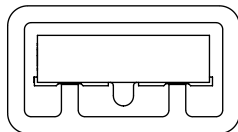


-K OPTION PACKAGING VIEW



TUBE: PT-1-24-02-23  
PLUG: TP-12

(PARTS TO HAVE POSITIONS #1 LOADED  
IN SAME DIRECTION AS ARROW ON TUBE)  
(SEE NOTE 4)



TUBE: PT-1-24-01-97  
PLUG: TP-12

F:\DWG\MISC\MKTG\LSH-XXX-01-X-D-A-XX-MKT.SLDDRW

<p>PROPRIETARY NOTE THIS DOCUMENT CONTAINS INFORMATION CONFIDENTIAL AND PROPRIETARY TO SAMTEC, INC. AND SHALL NOT BE REPRODUCED OR TRANSFERRED TO OTHER DOCUMENTS OR DISCLOSED TO OTHERS OR USED FOR ANY PURPOSE OTHER THAN THAT WHICH IT WAS OBTAINED WITHOUT THE EXPRESSED WRITTEN CONSENT OF SAMTEC, INC.</p> <p>DO NOT SCALE DRAWING</p> <p>SHEET SCALE: 3.5:1</p>		
	<p>520 PARK EAST BLVD., NEW ALBANY, IN 47150 PHONE: 812-944-6733 FAX: 812-948-5047 e-Mail: info@SAMTEC.com code: 55322</p>	
	<p>DESCRIPTION: .5mm DOUBLE ROW SOCKET ASSEMBLY</p>	
	<p>DWG. NO. LSH-XXX-01-X-D-A-XX</p>	
<p>BY: ERIC M 7/1/99</p>		<p>SHEET 2 OF 2</p>