

## DIGITAL DELAY LINE SERIES 0443 ECL 10K DELAY MODULE 5 TAP

### TECHNICAL INFORMATION

#### TEST CONDITIONS

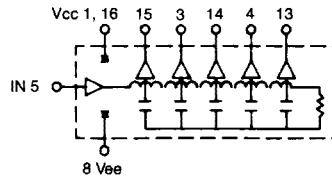
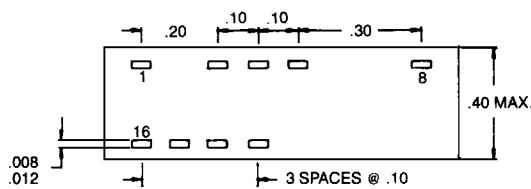
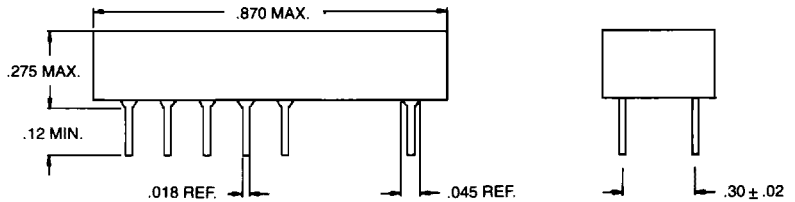
Logic 1	- 0.9 Volts
Logic 0	- 1.8 Volts
Rise Time	2.0 Nsec (20% to 80%)
Pulse Width	Total Delay + 10.0 Nsec
Pulse Period	4 x Pulse Width
Supply Voltage, Vcc	- 5.2 Volts
Output Terminations	50 Ohm
	± 1% to - 2 Volts
Ambient Temperature	25°C

#### PERFORMANCE CHARACTERISTICS

Delay Tolerances  
As Specified in Table  
Performance Characteristics apply at  
above listed Test Conditions.

#### ELECTRICAL CHARACTERISTICS

Supply Voltage, Vcc	- 4.94 To - 5.46 Volts
Logic 1 Input Voltage	- 0.98 Volts min.
Logic 1 Input Current	265 Microamp max.
Logic 1 Output Voltage	- 0.96 Volts min.
Logic 0 Input Voltage	- 1.63 Volts max.
Logic 0 Input Current	0.5 Microamp min.
Logic 0 Output Voltage	- 1.65 Volts max.
Operating Temperature Range	- 30°C To 85°C
Temperature Coefficient Of Total Delay	300PPM/°C Typical
Minimum Input Pulse Width	40% Of Total Delay
Maximum Duty Cycle	50%
—Compatible with ECL 10K circuits	
—Other delays and tolerances upon request	



Part Number	Tap 1 1, 3, 4	Tap 2 1, 3, 4	Tap 3 1, 3, 4	Tap 4 1, 3, 4	Output 1, 3, 4	Rise Time 2, 3, 4
0443-0006-02	2 ± .5	3 ± .5	4 ± 1	5 ± 1	6 ± 1	4
0443-0010-02	2 ± .5	4 ± 1	6 ± 1	8 ± 2	10 ± 2	4
0443-0015-02	3 ± 1	6 ± 1	9 ± 2	12 ± 2	15 ± 2	4
0443-0020-02	4 ± 1	8 ± 2	12 ± 2	16 ± 2	20 ± 2	4
0443-0025-02	5 ± 1	10 ± 2	15 ± 2	20 ± 2	25 ± 2	4
0443-0030-02	6 ± 1	12 ± 2	18 ± 2	24 ± 2	30 ± 2	4
0443-0035-02	7 ± 1	14 ± 2	21 ± 2	28 ± 2	35 ± 2	4
0443-0040-02	8 ± 2	16 ± 2	24 ± 2	32 ± 2	40 ± 2	4
0443-0045-02	9 ± 2	18 ± 2	27 ± 2	36 ± 2	45 ± 2	5
0443-0050-02	10 ± 2	20 ± 2	30 ± 2	40 ± 2	50 ± 2	5
0443-0075-02	15 ± 2	30 ± 2	45 ± 2	60 ± 3	75 ± 3	5
0443-0100-02	20 ± 2	40 ± 2	60 ± 3	80 ± 3	100 ± 3	10
0443-0125-02	25 ± 2	50 ± 2	75 ± 3	100 ± 3	125 ± 4	15
0443-0150-02	30 ± 2	60 ± 3	90 ± 3	120 ± 4	150 ± 5	15
0443-0175-02	35 ± 2	70 ± 3	105 ± 4	140 ± 5	175 ± 5	20
0443-0200-02	40 ± 2	80 ± 3	120 ± 4	160 ± 5	200 ± 6	20
0443-0225-02	45 ± 2	90 ± 3	135 ± 4	180 ± 6	225 ± 7	25
0443-0250-02	50 ± 2	100 ± 3	150 ± 5	200 ± 6	250 ± 8	25
0443-0300-02	60 ± 3	120 ± 4	180 ± 5	240 ± 7	300 ± 9	30
0443-0350-02	70 ± 3	140 ± 5	210 ± 7	280 ± 9	350 ± 11	30
0443-0400-02	80 ± 3	160 ± 5	240 ± 7	320 ± 10	400 ± 12	35
0443-0450-02	90 ± 3	180 ± 6	270 ± 8	360 ± 11	450 ± 14	35
0443-0500-02	100 ± 3	200 ± 6	300 ± 9	400 ± 12	500 ± 15	40

1 Delays measured at 50% of the pulse on leading edge only.  
2 Rise time measured from 20% to 80% of the pulse.  
3 All timing in NS

Specifications Subject To Change Without Notice