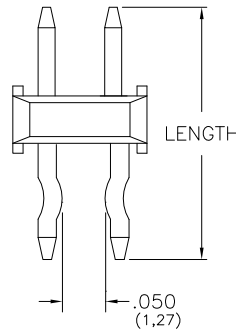
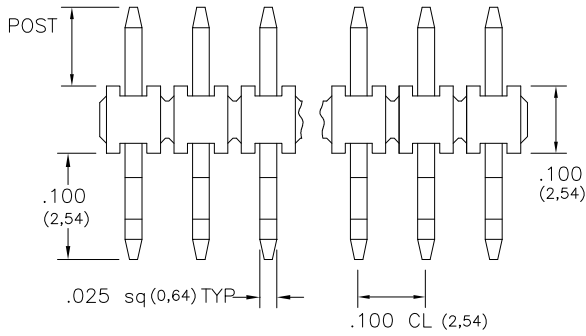
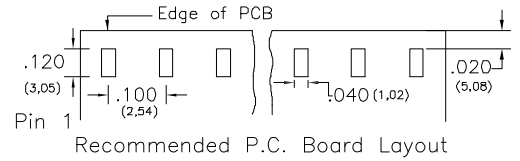
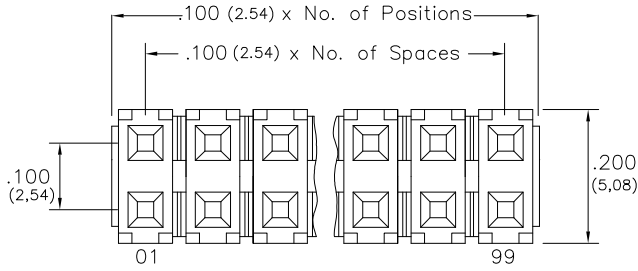


Major League Electronics .100 cl Terminal Strip Headers - Saddle Mount



Ordering Information

TSHS-1 - D - - - SAD - - LF

Pins Per Row
01 - 50
Row Specification
D = Dual Row

Lead Free

Polarized Position
Leave blank if not needed
If required, specify empty pin position, e.g. 012 for Pin 12

Pin Options			
Length	Post Height		
.430	10.92mm	.230	5.84mm
.445	11.30mm	.245	6.22mm
.456	11.58mm	.256	6.50mm
.480	12.19mm	.280	7.11mm
.530	13.46mm	.330	8.38mm
.630	16.00mm	.430	10.92mm
.730	18.54mm	.530	13.46mm
.830	21.08mm	.630	16.00mm
.930	23.62mm	.730	18.54mm
1.030	26.16mm	.830	21.08mm
1.130	28.70mm	.930	23.62mm
1.230	31.24mm	1.030	26.16mm
1.330	33.78mm	1.130	28.70mm
1.430	36.32mm	1.230	31.24mm

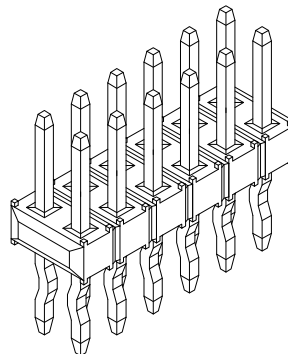
Plating Options	
G	- 10µ Gold on Contact area/Flash on Tail
T	- Matte Tin all Over
GT	- 10µ Gold on Contact Area / Matte Tin on Tail
H	- 30µ Gold on Contact Area / Matte Tin on Tail
F	- Gold Flash over Entire Pin

Specifications

Current Rating: 3.0 Ampere
 Insulation Resistance: 1000MΩ Min.
 Dielectric Withstanding: 600V AC
 Contact Resistance: 20 mΩ Max.
 Operating Temperature: -40°C to + 105°C
 Max. Process Temperature:
 Peak: 260°C up to 20 secs.
 Process: 230°C up to 60 secs.
 Wave: 260°C up to 6 secs.
 Manual Solder: 350°C up to 5 secs.

Materials

Contact Material: Phosphor Bronze
 Insulator Material: Nylon 6T
 Plating: Au or Sn over 50µ" (1,27) Ni



Mates with:

BCSS,
 BSSH,
 BSSHC,
 BSSQ,
 BSSQC,
 BSSQM,
 LBCSS,
 LSMBC,
 LSWSS,
 SMBC,
 SSHQ,
 SSHQR,
 SSHR,
 SSSH,
 SSSHM

Products cut to specific sizes are uncancellable/nonreturnable

Parts are subject to change without notice

TSHS-1-SAD SERIES

.100 cl Dual Row - Saddle Mount
 Terminal Strip Headers

22 JAN 07

Scale
 NTS

UNLESS OTHERWISE SPECIFIED
 DIMENSIONS IN INCHES (MM)
 TOLERANCES ARE:

ONE PLACE DECIMALS ±.100
 TWO PLACE DECIMALS ±.010
 THREE PLACE DECIMALS ±.005
 FOUR PLACE DECIMALS ±.0020
 ANGLES
 ±5°



4235 Earnings Way, New Albany, Indiana, 47150, USA
 1-800-782-3486 (USA/Canada/Mexico)
 Tel: 812-944-7244
 Fax: 812-944-7268
 E-mail: mle@mlelectronics.com
 Web: www.mlelectronics.com

Edition
 1

Sheet
 1/1