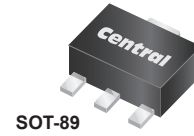


PRODUCT BRIEF



CXDM3069N (30V, 6.9A N-Channel)
CXDM4060N (40V, 6.0A N-Channel)
CXDM6053N (60V, 5.3A N-Channel)
MOSFETs in the SOT-89 package



Central Semiconductor's CXDM3069N, CXDM4060N, and CXDM6053N devices are high current N-channel enhancement-mode silicon MOSFETs designed for high speed pulsed amplifier and driver applications.

Features:

- Low $r_{DS(ON)}$
- High current
- Low gate charge
- Low threshold voltage

Applications:

- Load/Power switches
- Power supply converter circuits
- Battery powered portable equipment

Benefits:

- Energy efficiency
- High power density
- Industry standard package

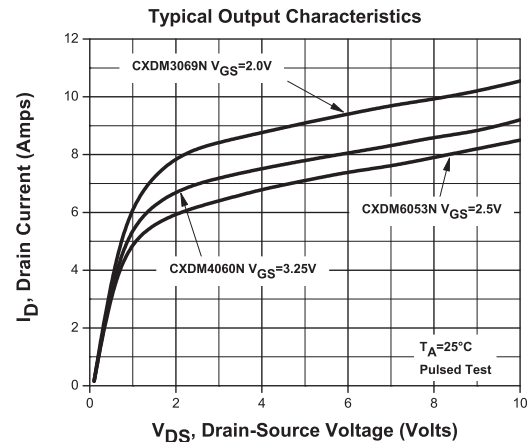
Literature:



New
SMD
SELECTION
GUIDE

Order your selection guide today.
 Visit: web.centralsemi.com/search/sample.php

Typical Electrical Characteristics



Samples:



To request samples visit:
www.centralsemi.com/info/CXDM

Weblink:

Use QR reader
 for direct link to
 product web page,



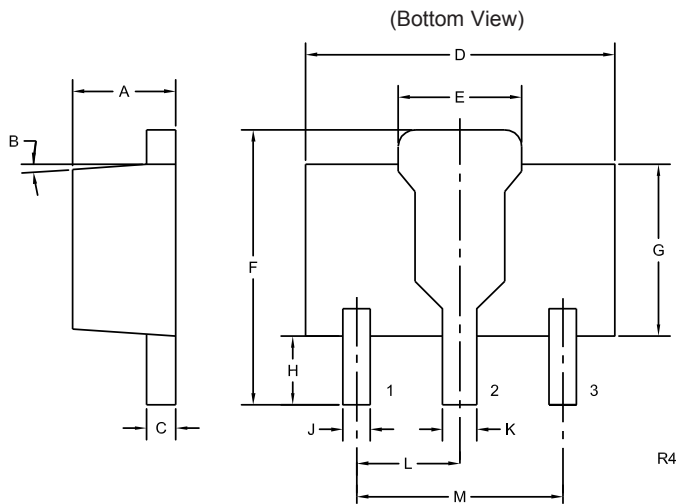
or use: www.centralsemi.com/info/CXDM

Type No.	Maximum Ratings (T _A = 25°C unless otherwise noted)				Electrical Characteristics: (T _A = 25°C unless otherwise noted)									
	I _D (A)	P _D (W)	T _J , T _{stg} (°C)	Θ _{JA} (°C/W)	BV _{DSS} (V)	V _{GS(th)} (V)		r _{DS(ON)} (mΩ)		@ V _{GS}	@ I _D	Q _{gs} (nC)	C _{iss} (pF)	C _{rss} (pF)
	MAX	MAX	MAX	MAX	MIN	MIN	MAX	TYP	MAX	(V)	(A)	TYP	TYP	TYP
CXDM3069N	6.9	1.2	-55 to +150	104	30	0.7	1.4	25 28 38	30 35 50	10 4.5 2.5	7.0 6.0 4.0	1.0	580	47
CXDM4060N	6.0	1.2	-55 to +150	104	40	1.0	3.0	20 30	31 45	10 4.5	6.0 5.0	2.0	730	64
CXDM6053N	5.3	1.2	-55 to +150	104	60	1.0	3.0	30 33	41 52	10 4.5	5.3 4.7	1.9	920	53

CXDM3069N (30V, 6.9A N-Channel)
CXDM4060N (40V, 6.0A N-Channel)
CXDM6053N (60V, 5.3A N-Channel)

MOSFETs
in the SOT-89 package

Mechanical Drawing - SOT-89

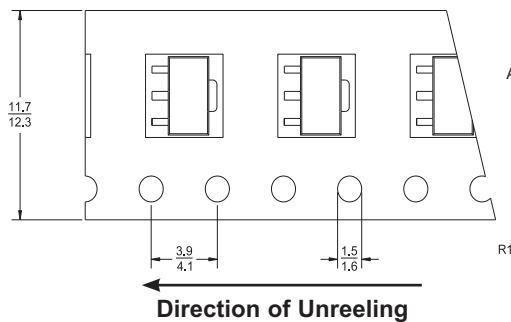


SYMBOL	INCHES		MILLIMETERS	
	MIN	MAX	MIN	MAX
A	0.055	0.067	1.40	1.70
B	4°		4°	
C	0.014	0.018	0.35	0.46
D	0.173	0.185	4.40	4.70
E	0.064	0.074	1.62	1.87
F	0.146	0.177	3.70	4.50
G	0.090	0.106	2.29	2.70
H	0.028	0.051	0.70	1.30
J	0.014	0.019	0.36	0.48
K	0.017	0.023	0.44	0.58
L	0.059		1.50	
M	0.118		3.00	

SOT-89 (REV: R4)

Tape Dimensions and Orientation (Dimensions in mm)

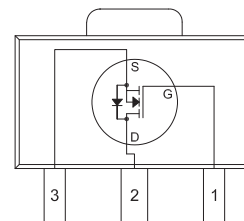
Tape Width: 12mm



Devices are taped in accordance with Electronic Industries Association Standard EIA-481-1-A

Pinout, Lead Code, and Marking

CXDM3069N, CXDM4060N, CXDM6053N



(Top View)

Tab is common to pin 2

LEAD CODE:

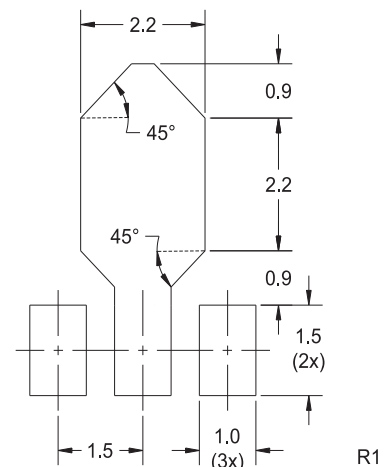
- 1) Gate
- 2) Drain
- 3) Source

MARKING:

Full Part Number

Mounting Pad Geometry

(Dimensions in mm)



Packaging Base / Ordering Information

Reel Size	Quantity	Central Item No.
7"	1,000	CXDM3069N TR
		CXDM4060N TR
		CXDM6053N TR

Sample devices available upon request. To order samples visit: www.centrasemi.com/info/CXDM



Innovative Discrete Semiconductors

For further information contact:
 Sales at Central Semiconductor Corp.
 (631) 435-1110 or visit:
www.centrasemi.com