

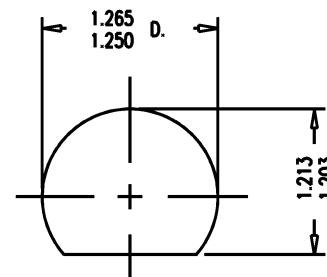
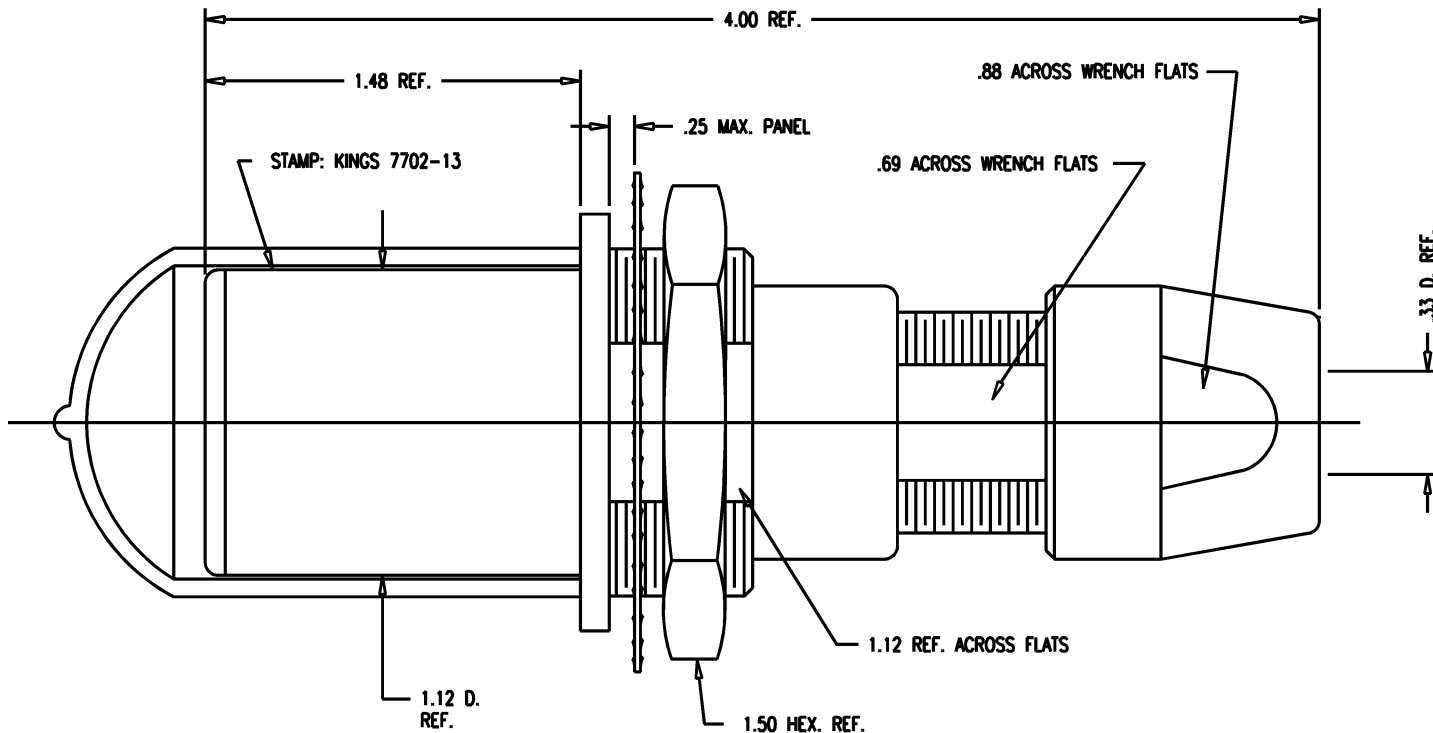
DASH NO.	M CODE	MADE FROM
----------	--------	-----------

# GSD

7702-13

**REVISIONS**

ISSUE	CHANGES
0	ER 36989 KH 05/29/96
1	CN 37005 A KH 06/13/96
2	CN 37238 D KH 02/03/97



MOUNTING HOLE

# GSD

**NOTES:**

- FOR USE WITH 760 CABLE GROUP (BELDEN 8232)
- FOR CABLING INSTRUCTIONS SEE KAI-8010.
- FOR CRIMPING USE DIE KTH-2002.
- MATERIALS:**  
 INSULATORS-TEFLON, ASTM-D-4894  
 LOCKWASHER-SPRING STEEL, ASTM-A-682  
 GASKETS-SILICONE RUBBER, ZZ-R-765  
 CAP-VINYL  
 K-GRIP SLEEVE-COMMERCIAL BRONZE, ASTM-B-135  
 CENTER CONTACT }  
 OUTER CONTACT SPRING } BER. COP., ASTM-B-196  
 INSERT }  
 ALL OTHER METAL PARTS-BRASS, ASTM-B16

- FINISHES:**  
 CENTER CONTACT }  
 OUTER CONTACT SPRING } GOLD PLATE PER MIL-G-45204  
 LOCKWASHER }  
 NUTS } KINGS TARNISH RESISTANT FINISH (TR-5)  
 COLLET }  
 BODIES }  
 ALL OTHER METAL PARTS-SILVER PLATE PER QQ-S-365
- ELECTRICAL CHARACTERISTICS:**  
 NOMINAL IMPEDANCE: 75 OHMS  
 FREQUENCY RANGE: DC-500 MHZ  
 VOLTAGE BREAKDOWN: CENTER CONDUCTOR/INNER GROUND: 1500 VRMS  
 INNER GROUND/OUTER GROUND: 500 VRMS

KAM6623

SCALE 2:1

APPROX SURFACE AREA

WAS: E-16566

USED ON

REF: KP-8022-767-400

JACK, BULKHEAD, TRI-LOC  
SERIAL DIGITAL

DRAWN KH DATE 05/29/96

DESIGN DW DATE 05/30/96

APPR. DATE

**KINGS**  
ELECTRONICS CO., INC.  
TUCKAHOE, NEW YORK 10707

7702-13