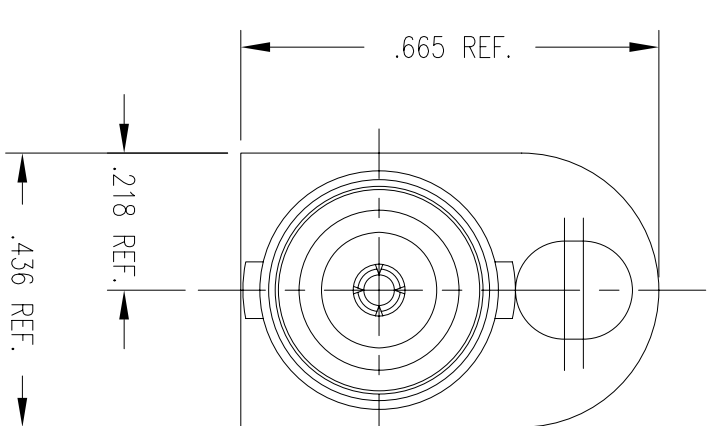
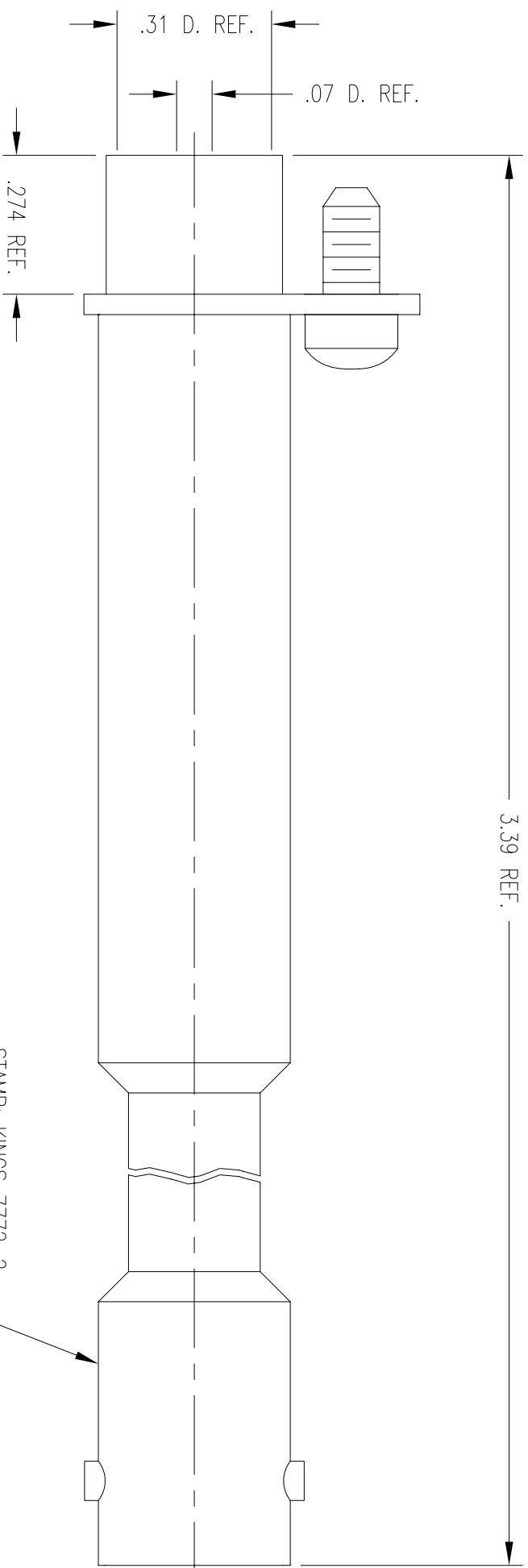


GSD

REVISIONS

ISSUE	CHANGES
5	ER 39013 DCT 3/1/4
6	CN 39245 C JLA 03/16/05
7	CN 39653 E HVN 10/04/06
8	CN 39772 C HVN 02/01/07
K	ER13312 PSM 01/30/09

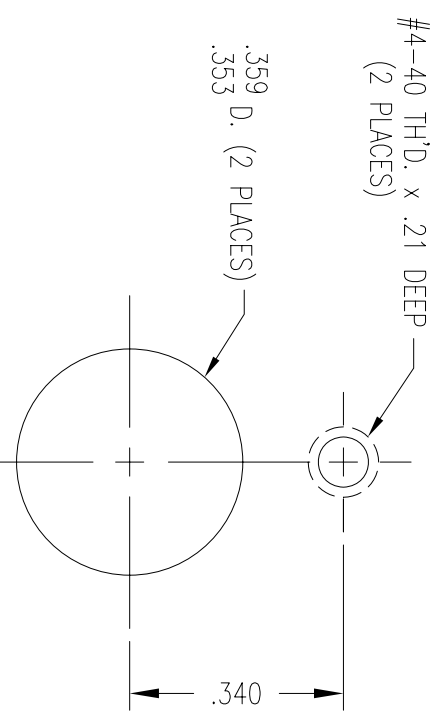
7772-2



STAMP: KINGS 7772-2  
YRWK (DATE CODE)

NOTES:

1. BNC INTERFACE ES-17, FIG. 5.
2. MATERIALS:  
INSULATORS-MITSUI TPX, RT18 OR EQUIVALENT  
SPRING CONTACT }  
BNC CONTACT F } BER. COP., ASTM-B-196  
VIDEO CONTACT F }  
HARDWARE-ZINC PLATED MACHINE SCREW  
ALL OTHER METAL PARTS-BRASS, ASTM-B16
3. FINISHES:  
CENTER CONTACT-HARD GOLD PLATE PER MIL-G-45204  
OVER NICKEL PLATE PER QQ-N-290  
SPRING CONTACT-GOLD PLATE PER ASTM-B488  
HARDWARE-PASSIVATE PER QQ-P-35  
ALL OTHER METAL PARTS-KINGS TARNISH RESISTANT FINISH (TR-5)
4. ELECTRICAL CHARACTERISTICS:  
NOMINAL IMPEDANCE: 75 OHMS  
FREQUENCY RANGE: DC - 3.0 GHZ  
RETURN LOSS: SELF-TERMINATED MODE  
UP TO 1.5 GHZ, < -20dB  
UP TO 3.0 GHZ, < -10dB
5. COMPLIANT TO SMPTE 424M SPECIFICATION.



MOUNTING HOLES

GSD

7772-2 SD

SCALE	3:1
APPROX SURFACE AREA	
WAS: E-20177	
USED ON	
REF:	ADAPTER, F-F, PANEL, MINIATURE, BNC TO VIDEO
DRAWN	DCT DATE 3/17/3
DESIGN	DCT DATE 3/17/3
APPR.	DATE
 by WINCHESTER ELECTRONICS Winchester Electronics 679 Barnes Industrial Road Wallingford, CT 06492	
	B SIZE

7772-2