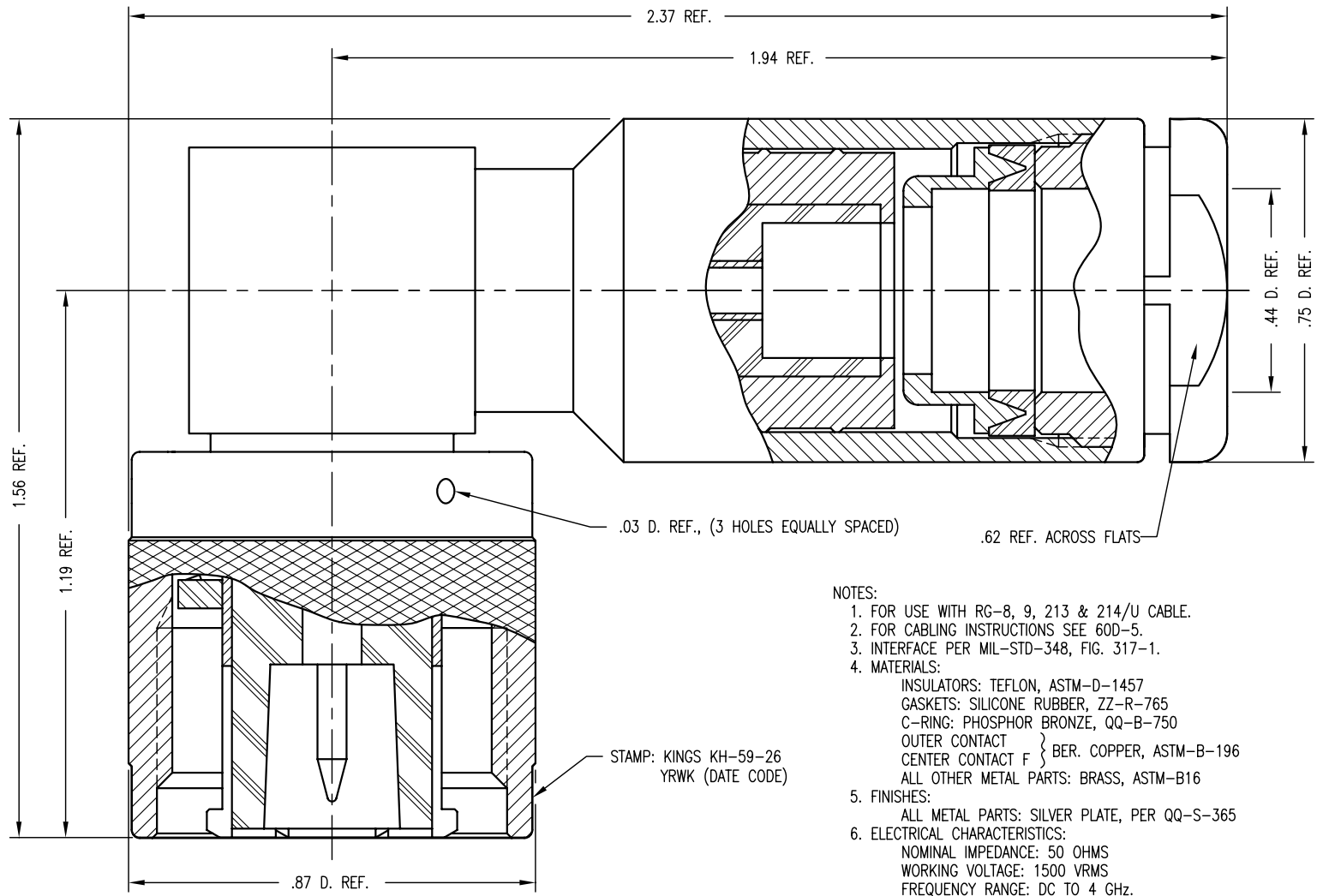


DASH NO.	M CODE	MADE FROM
----------	--------	-----------



- NOTES:
- FOR USE WITH RG-8, 9, 213 & 214/U CABLE.
 - FOR CABLING INSTRUCTIONS SEE 60D-5.
 - INTERFACE PER MIL-STD-348, FIG. 317-1.
 - MATERIALS:
 - INSULATORS: TEFLON, ASTM-D-1457
 - GASKETS: SILICONE RUBBER, ZZ-R-765
 - C-RING: PHOSPHOR BRONZE, QQ-B-750
 - OUTER CONTACT } BER. COPPER, ASTM-B-196
 - CENTER CONTACT F }
 - ALL OTHER METAL PARTS: BRASS, ASTM-B16
 - FINISHES:
 - ALL METAL PARTS: SILVER PLATE, PER QQ-S-365
 - ELECTRICAL CHARACTERISTICS:
 - NOMINAL IMPEDANCE: 50 OHMS
 - WORKING VOLTAGE: 1500 VRMS
 - FREQUENCY RANGE: DC TO 4 GHz.
 - MARK PACKAGE: HS6087-2
KH-59-26
91836
YRWK (DATE CODE)

SDKH-59-26

REVISIONS	
ISSUE	CHANGES
6	CN 33595 E REDRAWN WJM 12/13/91
7	CN 38454 C TML 11/21/01
8	CN 39242 E HVN 03/15/05
9	CN 39307 B JLA 07/27/05
L	REVISED PER ER21333 GGR 01/21/2010

KH-59-26SR8

CUSTOMER
SALES DRAWING

SCALE	4:1
APPROX SURFACE AREA	
USED ON	
REF:	McD. Douglas HS6087-2

PLUG, ANGLE, HN			
DRAWN	WJM	DATE	12/13/91
DESIGN	MJB	DATE	02/05/92
APPR.		DATE	
		Winchester Electronics 62 Barnes Industrial Road North Wallingford, CT 06492	

SDKH-59-26