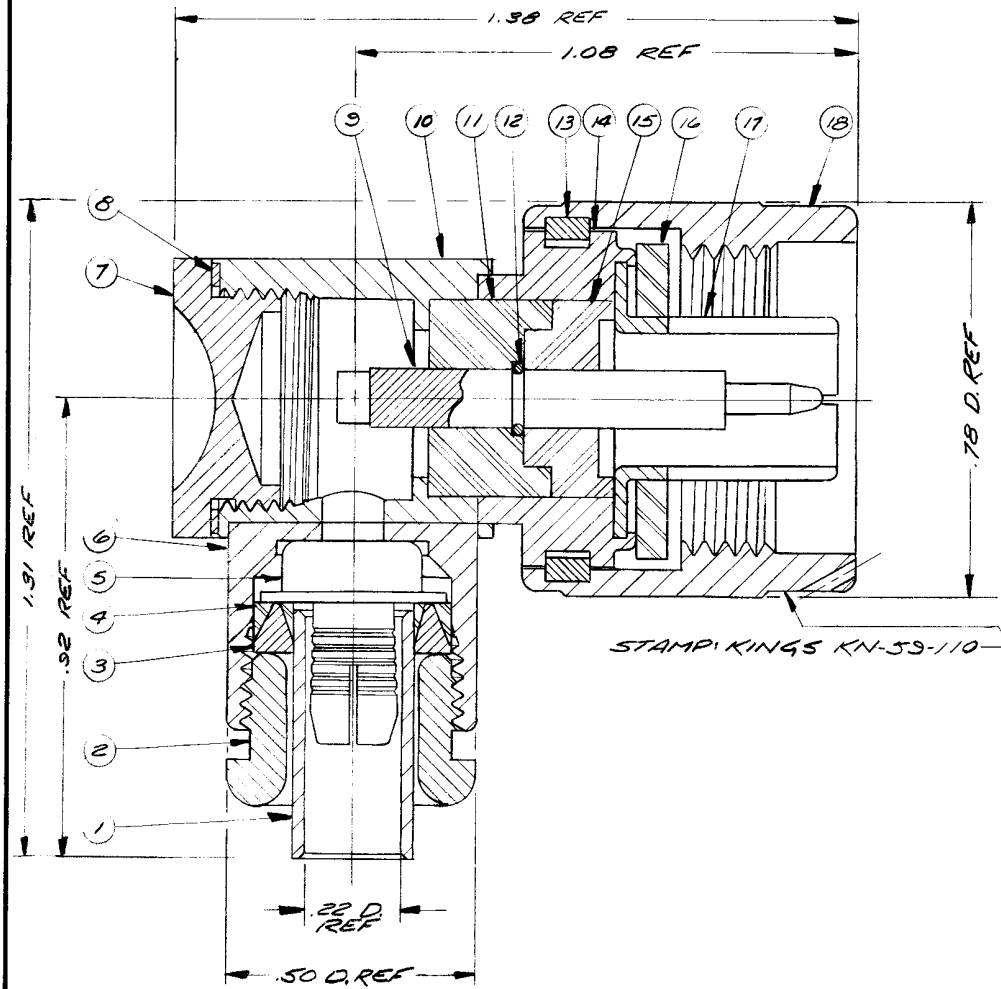


DASH NO.	DESCRIPTION	MADE FROM
----------	-------------	-----------



STAMPING KINGS KN-59-110

- NOTES:
- FOR USE WITH RG-55A, 142, 142A & 223/U CABLE.
 - MATERIAL:
BRASS, QQ-B-626
PHOSPHOR BRONZE, QQ-B-746
TEFLON, MIL-P-19468
SILICON RUBBER, EZ-R-765a
 - PLATING:
SILVER PLATE, QQ-S-365 .0002 MIN.
 - ELECTRICAL CHARACTERISTICS:
VOLTAGE RATING: 1000 VRMS
FREQUENCY RANGE: DC TO 11GHz

GSD

KN-59-110
(SHEET 1 OF 2)

REVISIONS	
ISSUE	CHANGES
4	CN 28293 D EAT 11 SEP 86
5	CN 29391 C EAT 11 NOV 87
G	REVISED PER ER24570 05/28/2010 GGR

CUSTOMER SALES DRAWING

USED ON:
REF:
FINISH:
SPEC:
MATL:
SPEC:

N ANGLE PLUG

DRAWN JHP	DATE 18 FEB 77
APPR. DJ	DATE 18 FEB 77



- UNLESS OTHERWISE SPECIFIED:
- TOLERANCES: FRACTIONS & 2 PLACE DECIMALS ± .010
3 PLACE DECIMALS ± .004
T. I. R. CONCENTRICITY OF ANY 2 DIAMETERS MAY NOT EXCEED HALF THE SUM OF THEIR TOLERANCES.
 - REMOVE ALL BURRS. BREAK SHARP EDGES .005 MAX.
 - NO FILLETS PERMITTED.
 - SURFACE ROUGHNESS 63 MICROINCHES RMS MAX.
 - ALL DIMENSIONS PRIOR TO PLATING.

ITEM	REQ'D	DESCRIPTION	PART NO.
			KN-59-110 S-D

(SHEET 1 OF 2)

ITEM	REQ'D	DESCRIPTION	PART NO.
1	1	K- GRIP SLEEVE	
2	1	CLAMP NUT	
3	1	GLAND	
4	1	GASKET	
5	1	K-GRIP	
	1	KEY	
7	1	CAP	
8	1	GASKET	
9	1	CONTACT M	
10	1	BODY ASS'Y	
11	1	INSULATOR	
12	1	C-RING	
13	1	C-RING	
	1	KEY	
15	1	INSULATOR	
16	1	GASKET	
17	1	OUTER CONTACT	
18	1	COUPLING NUT	

REVISIONS	
ISSUE	CHANGES
4	CN 28293 D EAT 11 SEP 86
5	CN 29391 C EAT 11 NOV 87
G	REVISED PER ER24570 05/28/2010 GGR

CUSTOMER SALES DRAWING

USED ON:

REF:

FINISH

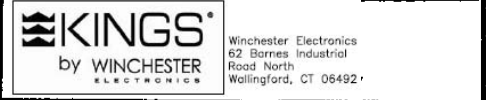
SPEC.

MATL.

SPEC.

PARTS LIST

DRAWN	M M	DATE	18 FEB 77
APPR.	JHP	DATE	18 FEB 77



UNLESS OTHERWISE SPECIFIED:

1. TOLERANCES: FRACTIONS & 2 PLACE DECIMALS ± .010
3 PLACE DECIMALS ± .004
T. I. R. CONCENTRICITY OF ANY 2 DIAMETERS MAY NOT EXCEED HALF THE SUM OF THEIR TOLERANCES.
2. REMOVE ALL BURRS. BREAK SHARP EDGES .005 MAX.
3. NO FILLETS PERMITTED.
4. SURFACE ROUGHNESS 63 MICRINCHES RMS MAX.
5. ALL DIMENSIONS PRIOR TO PLATING.