

PLEASE CHECK WWW.MOLEX.COM FOR LATEST PART INFORMATION

Part Number: [0350220011](#)
Status: **Active**
Description: 2.50mm (.098") Pitch Board-In Crimp Housing, 2.95mm (.116") Height, Right Angle and Vertical, 11 Circuits

Documents:

3D Model	Product Specification PS-35022-003 (PDF)
Drawing (PDF)	RoHS Certificate of Compliance (PDF)
Product Specification PS-35021-001 (PDF)	

Agency Certification

CSA	LR19980
UL	E29179

General

Product Family	Crimp Housings
Series	35022
Product Name	Board-In

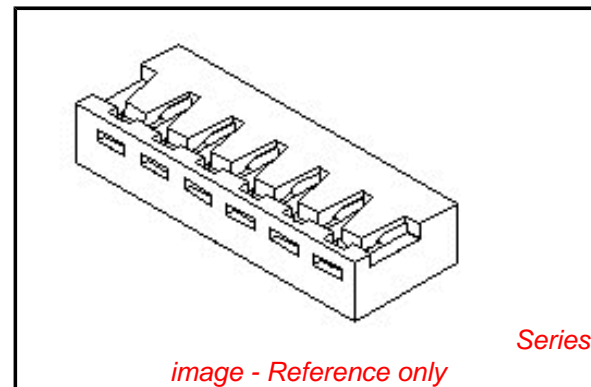
Physical

Circuits (maximum)	11
Color - Resin	Natural
Flammability	94V-0
Gender	Male
Glow-Wire Compliant	No
Lock to Mating Part	None
Material - Resin	Nylon
Number of Rows	1
Packaging Type	Bag
Panel Mount	No
Pitch - Mating Interface (in)	0.098 In
Pitch - Mating Interface (mm)	2.50 mm
Stackable	No
Temperature Range - Operating	-40°C to +105°C

Material Info

Reference - Drawing Numbers

Product Specification	PS-35021-001, PS-35022-003, RPS-35022-001
Sales Drawing	SD-35022-00**



EU RoHS

ELV and RoHS Compliant
REACH SVHC Contains SVHC: No
Halogen-Free Status
Not Reviewed

China RoHS



Need more information on product environmental compliance?

Email productcompliance@molex.com
 For a multiple part number RoHS Certificate of Compliance, [click here](#)

Please visit the [Contact Us](#) section for any non-product compliance questions.

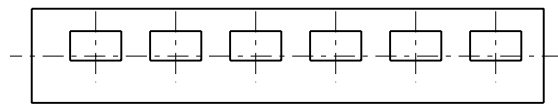
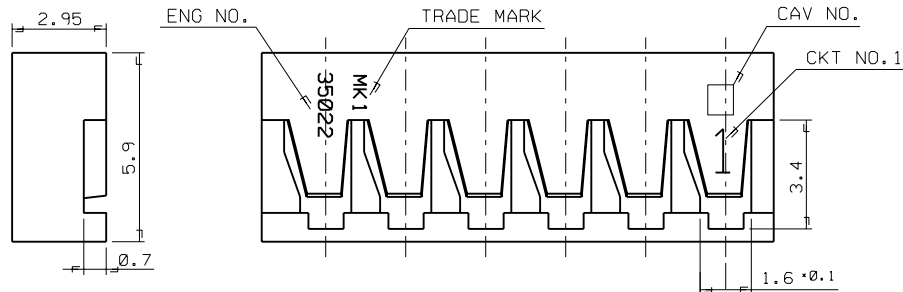
Search Parts in this Series

[35022Series](#)

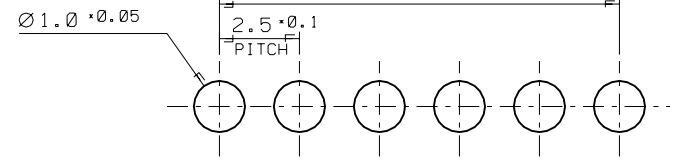
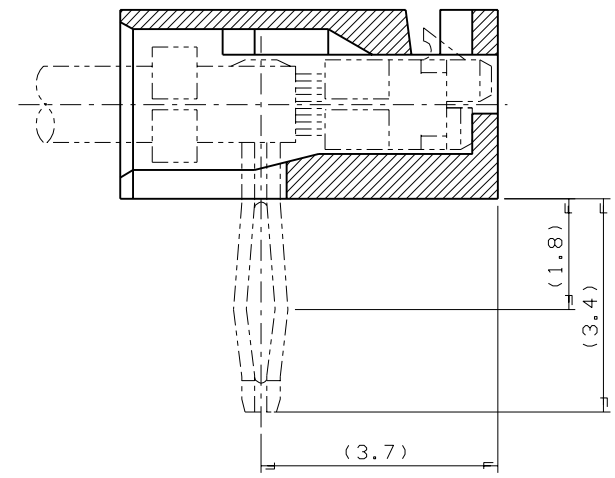
Use With

[35044](#) , [35021](#)

PROJECT NO. SIMILAR ITEM EDP NO. 35022-00** ENG. NO. SD 35022-00**



NOTE
 1. MATERIAL : NYLON 66 UL94V-0
 2. APPLIED TERMINAL : 35021-1001/1101



B	A	ENG NO.	CKT NO.	B	A	ENG NO.	CKT NO.
41.0	37.5	35022-0016	16	23.5	20.0	-0009	9
38.5	35.0	-0015	15	21.0	17.5	-0008	8
36.0	32.5	-0014	14	18.5	15.0	-0007	7
33.5	30.0	-0013	13	16.0	12.5	-0006	6
31.0	27.5	-0012	12	13.5	10.0	-0005	5
28.5	25.0	-0011	11	11.0	7.5	-0004	4
26.0	22.5	-0010	10	8.5	5.0	-0003	3
				6.0	2.5	35022-0002	2

				MATERIAL NYLON 66 UL94V-0		molex MOLEX-KOREA CO.,LTD.	
				GENERAL TOLERANCE DIMENSION : 0.3		DRAWN BY HSSHIN	
				ANGLE : 1°		CHK'D BY	
G	REVISED	96-019	96-2/14	DIMENSION CLASSIFICATION		APP'D BY	
F	REDRAWING	93-021	93-10/26	▽ : CRITICAL ▼ : MAJOR		SCALE 7-1	
LTR	REVISION RECORD	ECN	DATE	() : REFERENCE		TITLE : 2.5MM PITCH R/A B-IN CONNECTOR HOUSING	
				ASS'Y PART		SHEET 10F1	
				DESCRIPTION ENG. NO.		ENG. NO. SD 35022-00**	
REVISE ONLY ON CAD SYSTEM						REV G	