

< High-power GaAs FET (small signal gain stage) >

MGF0907B

L & S BAND / 10W

non - matched

DESCRIPTION

The MGF0907B, GaAs FET with an N-channel schottky gate, is designed for use in UHF band amplifiers.

FEATURES

- Class A operation
- High output power
P1dB=40.0dBm(TYP.) @f=2.3GHz
- High power gain
GLP=10.0dB(TYP.) @f=2.3GHz
- High power added efficiency
P.A.E =37%(TYP.) @f=2.3GHz,P1dB
- Hermetically sealed metal-ceramic package with ceramic lid

APPLICATION

- For UHF Band power amplifiers

QUALITY

- IG

RECOMMENDED BIAS CONDITIONS

- Vds=10V • Ids=2.4A • Rg=50Ω Refer to Bias Procedure

Absolute maximum ratings (Ta=25°C)

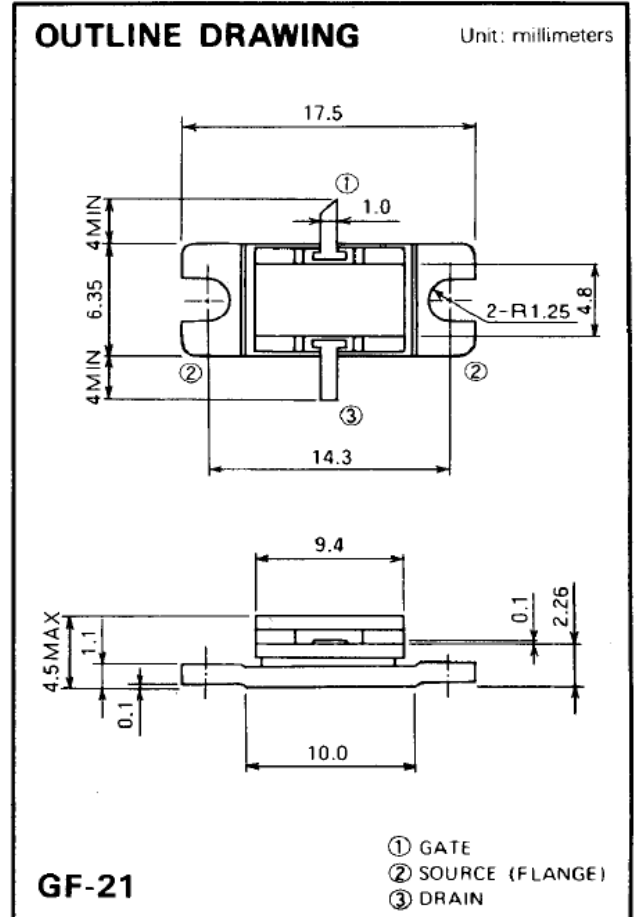
Symbol	Parameter	Ratings	Unit
VGDO	Gate to drain voltage	-15	V
VGSO	Gate to source voltage	-15	V
ID	Drain current	6	A
IGR	Reverse gate current	-20	mA
IGF	Forward gate current	42	mA
PT*1	Total power dissipation	37.5	W
Tch	Channel temperature	175	°C
Tstg	Storage temperature	-65 to +175	°C

*1:Tc=25°C

Electrical characteristics (Ta=25°C)

Symbol	Parameter	Test conditions	Limits			Unit
			Min.	Typ.	Max.	
IDSS	Saturated drain current	VDS=3V,VGS=0V	-	4	6	A
gm	Transconductance	VDS=3V,ID=2.2A	-	2	-	S
VGS(off)	Gate to source cut-off voltage	VDS=3V,ID=20mA	-1	-2.5	-4	V
P1dB	Output power at 1dB gain compression	VDS=10V,ID(RF off)=2.4A f=2.3GHz	38.5	40	-	dBm
GLP	Linear Power Gain		8	10	-	dB
ID	Drain current		-	2.2	3.0	A
P.A.E.	Power added efficiency		-	37	-	%
Rth(ch-c) *2	Thermal resistance	Δ Vf method	-	-	4.0	°C/W

*2 :Channel-case

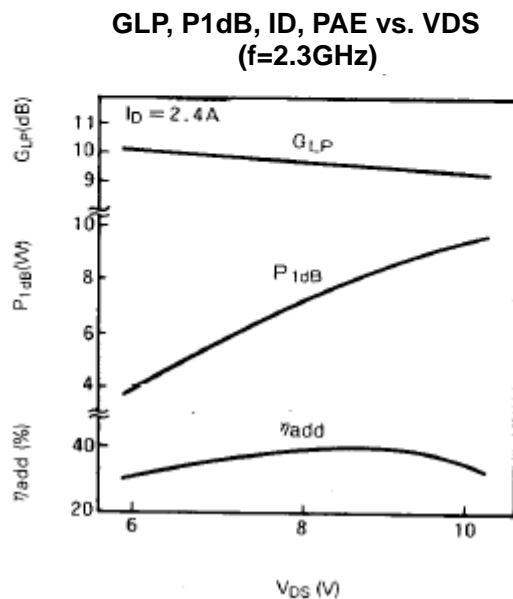
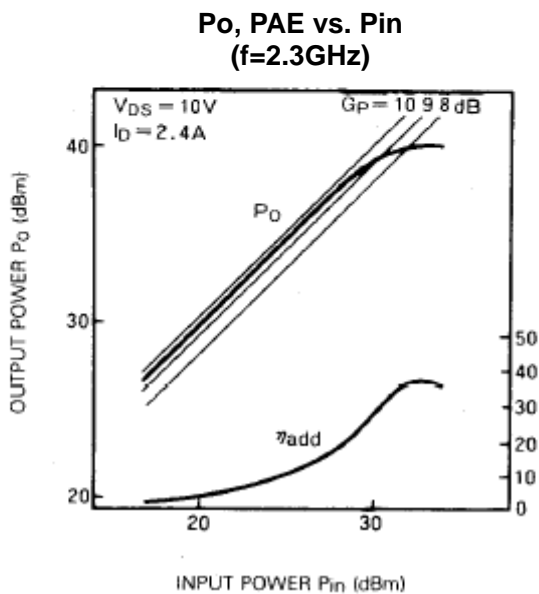
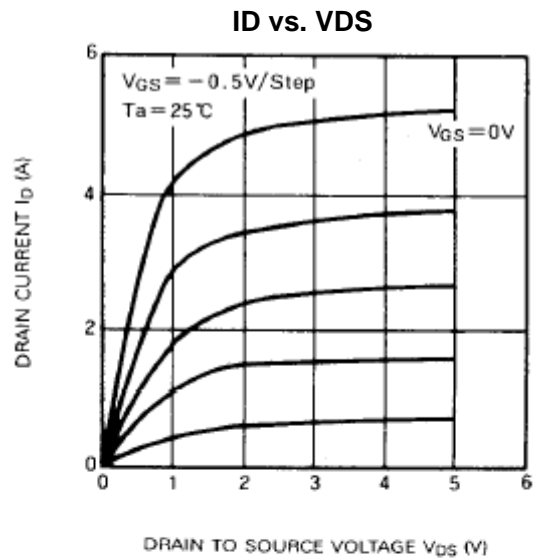
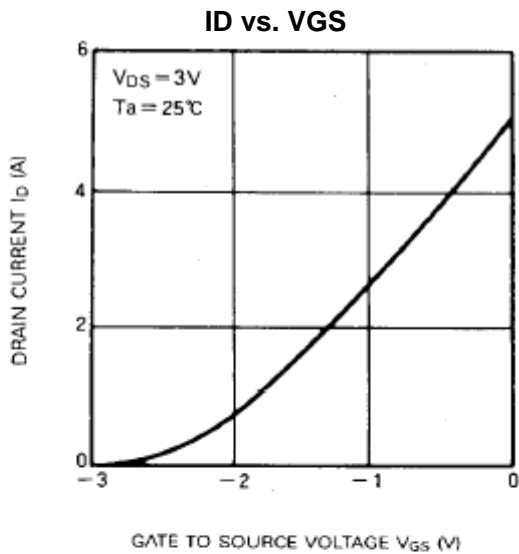


MGF0907B

L & S BAND / 10W

non - matched

MGF0907B TYPICAL CHARACTERISTICS (Ta=25deg.C)

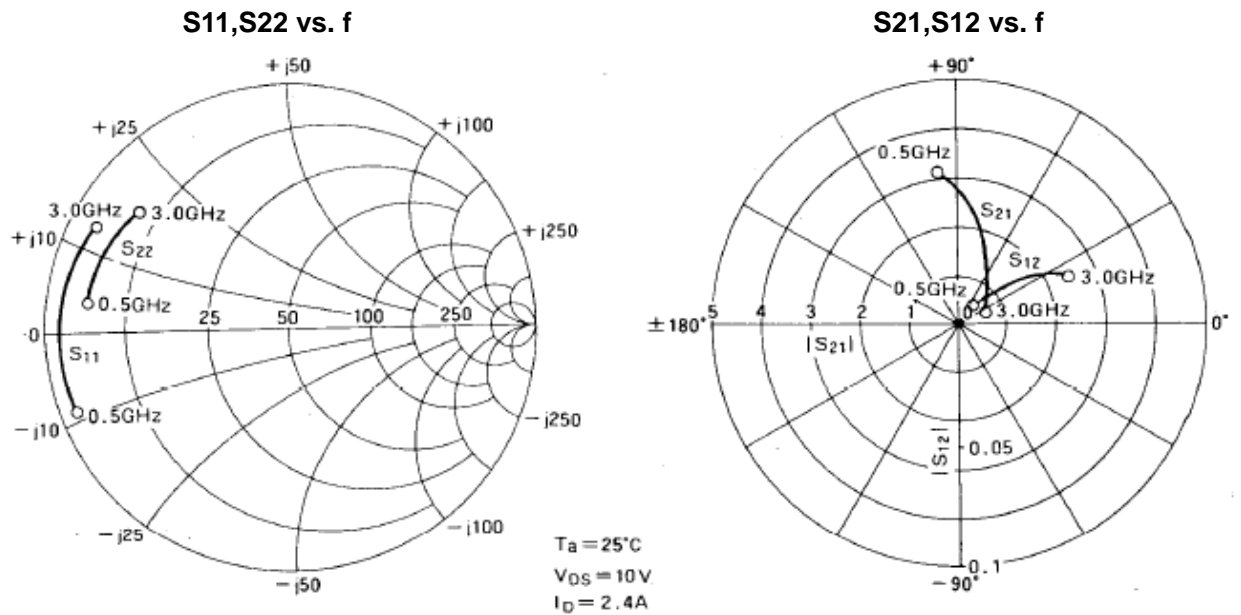


MGF0907B

L & S BAND / 10W

non - matched

MGF0907B S-parameters(Ta=25deg.C , VDS=10(V),IDS=2.4(A))



f (GHz)	S ₁₁		S ₂₁		S ₁₂		S ₂₂		K	MAG (dB)
	Magn.	Ang. (deg)	Magn	Ang. (deg)	Magn.	Ang. (deg)	Magn.	Ang. (deg)		
0.5	0.947	-162.1	3.089	96.7	0.010	45.8	0.823	171.6	1.086	23.1
0.6	0.943	-165.6	2.793	90.8	0.012	44.1	0.822	170.1	1.055	22.2
0.7	0.939	-168.7	2.524	85.5	0.014	42.7	0.822	168.7	1.038	21.4
0.8	0.936	-171.4	2.281	80.7	0.014	41.5	0.821	167.5	1.024	20.6
0.9	0.934	-173.8	2.092	76.4	0.017	40.5	0.821	166.4	1.043	19.6
1.0	0.932	-175.9	1.865	72.7	0.018	39.7	0.820	165.5	1.072	18.5
1.1	0.931	-177.7	1.691	69.3	0.019	39.0	0.819	164.7	1.095	17.6
1.2	0.930	-179.3	1.537	66.4	0.020	38.4	0.818	164.0	1.124	16.7
1.3	0.929	-179.3	1.401	63.7	0.021	37.9	0.817	163.3	1.157	15.8
1.4	0.929	-178.1	1.284	61.4	0.021	37.5	0.816	162.7	1.219	15.0
1.5	0.928	-177.0	1.183	59.3	0.022	37.2	0.815	162.1	1.257	14.3
1.6	0.928	-176.0	1.096	57.4	0.022	36.9	0.813	161.5	1.328	13.6
1.7	0.927	-175.1	1.024	55.6	0.023	36.6	0.811	160.8	1.367	12.7
1.8	0.927	-174.2	0.964	54.0	0.023	36.3	0.810	160.2	1.430	12.3
1.9	0.926	-173.3	0.915	52.4	0.024	35.9	0.808	159.4	1.461	11.8
2.0	0.925	-172.3	0.875	50.9	0.025	35.5	0.806	158.6	1.488	11.3
2.1	0.923	-171.2	0.844	49.3	0.026	35.0	0.803	157.7	1.527	10.8
2.2	0.921	-170.0	0.820	47.6	0.027	34.4	0.801	156.7	1.555	10.4
2.3	0.919	-168.6	0.801	45.8	0.028	33.7	0.798	155.5	1.584	10.1
2.4	0.916	-167.1	0.787	43.9	0.030	32.8	0.769	154.1	1.574	9.7
2.5	0.912	-165.3	0.776	41.7	0.032	31.8	0.792	152.6	1.587	9.4
2.6	0.907	-163.3	0.767	39.2	0.035	30.6	0.789	150.9	1.570	9.0
2.7	0.902	-160.9	0.757	36.5	0.037	29.1	0.786	148.9	1.594	8.6
2.8	0.895	-158.3	0.746	33.4	0.040	27.4	0.782	146.6	1.614	8.1
2.9	0.887	-155.2	0.735	29.9	0.044	25.4	0.778	144.1	1.620	7.6
3.0	0.879	-151.7	0.719	26.0	0.048	23.1	0.774	141.4	1.636	7.1

Keep safety first in your circuit designs!

Mitsubishi Electric Corporation puts the maximum effort into making semiconductor products better and more reliable, but there is always the possibility that trouble may occur with them. Trouble with semiconductors may lead to personal injury, fire or property damage. Remember to give due consideration to safety when making your circuit designs, with appropriate measures such as (i) placement of substitutive, auxiliary circuits, (ii) use of non-flammable material or (iii) prevention against any malfunction or mishap.

Notes regarding these materials

- These materials are intended as a reference to assist our customers in the selection of the Mitsubishi semiconductor product best suited to the customer's application; they do not convey any license under any intellectual property rights, or any other rights, belonging to Mitsubishi Electric Corporation or a third party.
- Mitsubishi Electric Corporation assumes no responsibility for any damage, or infringement of any third-party's rights, originating in the use of any product data, diagrams, charts, programs, algorithms, or circuit application examples contained in these materials.
- All information contained in these materials, including product data, diagrams, charts, programs and algorithms represents information on products at the time of publication of these materials, and are subject to change by Mitsubishi Electric Corporation without notice due to product improvements or other reasons. It is therefore recommended that customers contact Mitsubishi Electric Corporation or an authorized Mitsubishi Semiconductor product distributor for the latest product information before purchasing a product listed herein.

The information described here may contain technical inaccuracies or typographical errors. Mitsubishi Electric Corporation assumes no responsibility for any damage, liability, or other loss rising from these inaccuracies or errors.

Please also pay attention to information published by Mitsubishi Electric Corporation by various means, including the Mitsubishi Semiconductor home page (<http://www.MitsubishiElectric.com/>).

- When using any or all of the information contained in these materials, including product data, diagrams, charts, programs, and algorithms, please be sure to evaluate all information as a total system before making a final decision on the applicability of the information and products. Mitsubishi Electric Corporation assumes no responsibility for any damage, liability or other loss resulting from the information contained herein.
- Mitsubishi Electric Corporation semiconductors are not designed or manufactured for use in a device or system that is used under circumstances in which human life is potentially at stake. Please contact Mitsubishi Electric Corporation or an authorized Mitsubishi Semiconductor product distributor when considering the use of a product contained herein for any specific purposes, such as apparatus or systems for transportation, vehicular, medical, aerospace, nuclear, or undersea repeater use.
- The prior written approval of Mitsubishi Electric Corporation is necessary to reprint or reproduce in whole or in part these materials.
- If these products or technologies are subject to the Japanese export control restrictions, they must be exported under a license from the Japanese government and cannot be imported into a country other than the approved destination.
Any diversion or re-export contrary to the export control laws and regulations of Japan and/or the country of destination is prohibited.
- Please contact Mitsubishi Electric Corporation or an authorized Mitsubishi Semiconductor product distributor for further details on these materials or the products contained therein.