

The LS4352 is an enhancement mode N-Channel Mosfet

The LS4352 is an enhancement mode N-Channel Mosfet designed for use as a General Purpose amplifier or switch

The hermetically sealed TO-72 package is well suited for high reliability and harsh environment applications.

(See Packaging Information).

LS4352 Features:

- Low ON Resistance
- Low Capacitance
- High Gain
- High Gate Breakdown Voltage
- Low Threshold Voltage

FEATURES

DIRECT REPLACEMENT FOR INTERSIL 2N4352

HIGH DRAIN CURRENT $I_D = 100\text{mA}$

HIGH GAIN $g_{fs} = 1000\mu\text{S}$

ABSOLUTE MAXIMUM RATINGS
@ 25°C (unless otherwise noted)

Maximum Temperatures

Storage Temperature -65°C to +200°C

Operating Junction Temperature -55°C to +150°C

Maximum Power Dissipation

Continuous Power Dissipation 375mW

MAXIMUM CURRENT

Drain to Source (Note 1) 100mA

MAXIMUM VOLTAGES

Drain to Body 25V

Drain to Source 25V

Peak Gate to Source (Note 2) $\pm 125\text{V}$

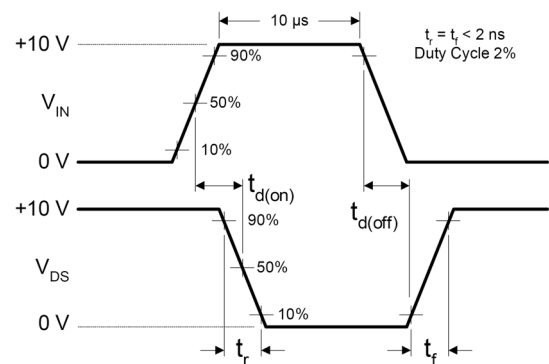
LS4352 ELECTRICAL CHARACTERISTICS @ 25°C (unless otherwise noted)

| SYMBOL | CHARACTERISTIC | MIN | TYP. | MAX | UNITS | CONDITIONS |
|--------------|-----------------------------------|------|------|-----|---------------|--|
| BV_{DSS} | Drain to Source Breakdown Voltage | 25 | -- | -- | V | $I_D = 10\mu\text{A}, V_{GS} = 0\text{V}$ |
| $V_{DS(on)}$ | Drain to Source "On" Voltage | -- | -- | 1 | | $I_D = 2\text{mA}, V_{GS} = 10\text{V}$ |
| $V_{GS(th)}$ | Gate to Source Threshold Voltage | 1 | -- | 5 | | $V_{DS} = 10\text{V}, I_D = 10\mu\text{A}$ |
| I_{GSS} | Gate Leakage Current | -- | -- | 10 | pA | $V_{GS} = \pm 30\text{V}, V_{DS} = 0\text{V}$ |
| I_{DSS} | Drain Leakage Current "Off" | -- | -- | 10 | nA | $V_{GS} = 10\text{V}, V_{DS} = 10\text{V}$ |
| $I_{D(on)}$ | Drain Current "On" | 3 | -- | -- | mA | $V_{GS} = 10\text{V}, V_{DS} = 10\text{V}$ |
| g_{fs} | Forward Transconductance | 1000 | -- | -- | μS | $V_{DS} = 10\text{V}, I_D = 2\text{mA}, f = 1\text{MHz}$ |
| $r_{DS(on)}$ | Drain to Source "On" Resistance | -- | -- | 300 | Ω | $V_{GS} = 10\text{V}, I_D = 0\text{A}, f = 1\text{kHz}$ |
| C_{rss} | Reverse Transfer Capacitance | -- | -- | 1.3 | pF | $V_{DS} = 0\text{V}, V_{GS} = 0\text{V}, f = 140\text{kHz}$ |
| C_{iss} | Input Capacitance | -- | -- | 5 | | $V_{DS} = 10\text{V}, V_{GS} = 0\text{V}, f = 140\text{kHz}$ |
| C_{db} | Drain to Body Capacitance | -- | -- | 5.0 | | $V_{DS} = 10\text{V}, V_{GS} = 0\text{V}, f = 140\text{kHz}$ |

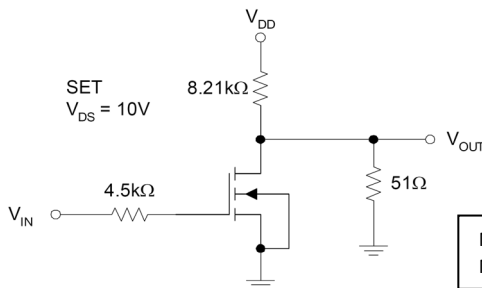
SWITCHING CHARACTERISTICS

| SYMBOL | CHARACTERISTIC | MAX | UNITS |
|--------------|---------------------|-----|-------|
| $t_{d(on)}$ | Turn On Delay Time | 45 | ns |
| t_r | Turn On Rise Time | 65 | |
| $t_{d(off)}$ | Turn Off Delay Time | 60 | |
| t_f | Turn Off Fall Time | 100 | |

TIMING WAVEFORMS



SWITCHING TEST CIRCUIT



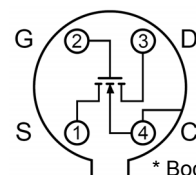
Note 1 - Absolute maximum ratings are limiting values above which LS4352 serviceability may be impaired.
Note 2 - Device must not be tested at $\pm 125\text{V}$ more than once or longer than 300ms.

Micross Components Europe

Available Packages:

LS4352 in TO-72
LS4352 in bare die.

TO-72 (Bottom View)



Tel: +44 1603 788967

Email: chipcomponents@micross.com

Web: <http://www.micross.com/distribution>

Please contact Micross for full package and die dimensions

Information furnished by Linear Integrated Systems and Micross Components is believed to be accurate and reliable. However, no responsibility is assumed for its use; nor for any infringement of patents or other rights of third parties which may result from its use. No license is granted by implication or otherwise under any patent or patent rights of Linear Integrated Systems.