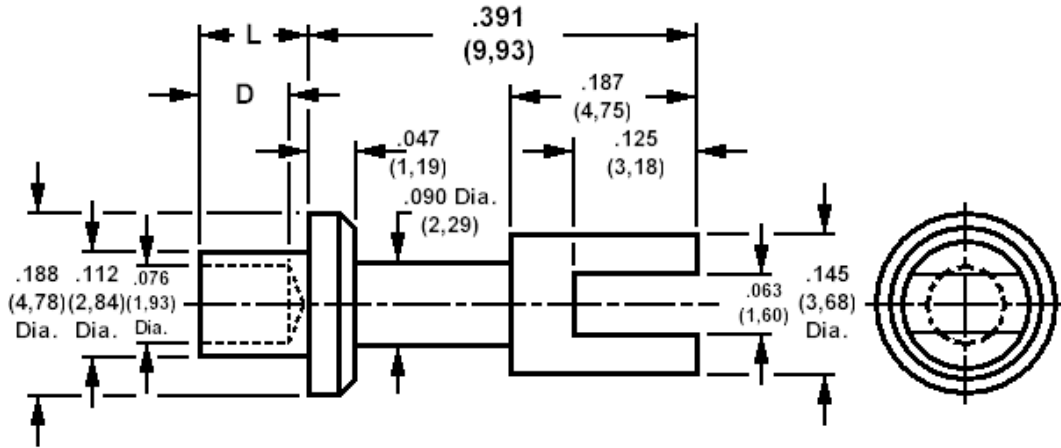


140-1025 Solder terminal, slotted

Recommended mounting hole .116 (2,95), #32 drill



How to order code

140-1025-XX-YY-00

Basic Part No XX = L dimension, YY = Plating Finish

DIMENSIONS (XX)				
Basic Part No	(XX)	L	Board Thickness	D
140-1025	-01	.078 (1,98)	.031 (0,79)	.068 (1,73)
	-02	.109 (2,77)	.062 (1,59)	.098 (2,49)
	-03	.141 (3,58)	.094 (2,38)	.098 (2,49)
	-04	.172 (4,37)	.125 (3,18)	.098 (2,49)

MATERIALS			
Component	Material	Finish (YY)	
		-01	-05
Terminal	Brass	Silver	Electro solder

SWAGE TOOLING	
Recommended Swaging Tools:-	
Anvil	435-6454-01-00-00
Roll punch	435-6601-01-00-00
Flare Punch	435-6663-01-00-00