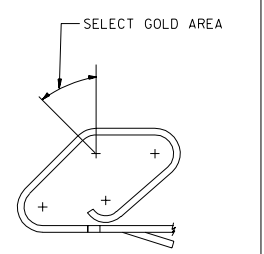
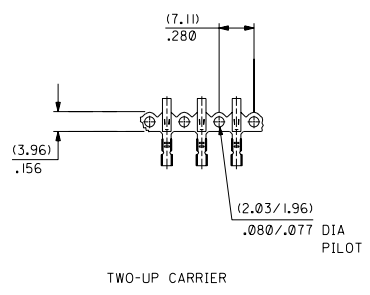
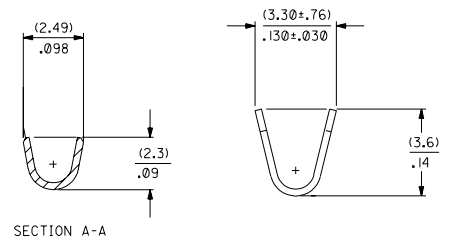
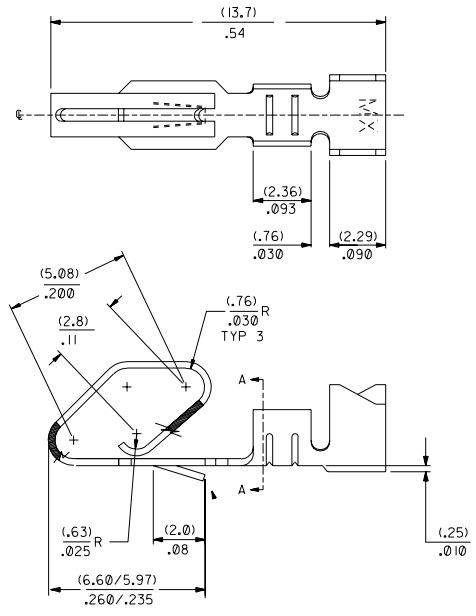
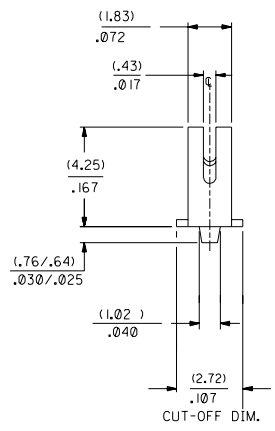


PART NO.	ENG NO.	PLT
008-56-0113	2477-G	565
008-56-0114	2477-GL	565
008-50-0109	2477-(P909)	P909
008-50-0110	2477-(P909)L	P909

- NOTES:
1. CRIMP ACCEPTS 18 TO 24 GA. WIRE WITH (2.79)/.110 MAX. INSUL. DIA. (2.54)/.100 MAX. INSUL. DIA. WHEN USED WITH 2139 CONNECTOR.
 2. DIMENSIONS GIVEN ACROSS CENTERLINES ARE SYMMETRICAL ABOUT THOSE CENTERLINES WITHIN HALF THE TOTAL TOLERANCE.
 3. THIS PART CONFORMS TO PRODUCT SPEC. 08-50.



2477- * * * * *

MATERIAL CODE
(.25)/.010 THK
BLANK=260 BRASS

WINDING SPEC.
BLANK= ES-339-B
L=LOOSE

OPTION CODE
BLANK=AS SHOWN

PLATING CODE PER SDES-88

(P909) *OVERALL HOT TIN DIP: .00254 MICROMETERS MIN.
*THE PRIMARY SHIPPING CARTON WILL BE LABELED 'COMPLIANT TO
ROHS DIRECTIVE 2002/95/EC AND ELV ANNEX II OF DIRECTIVE 2000/53/EC'.
CARTONS WITHOUT THIS LABEL MAY CONTAIN PRODUCT WITH TIN/LEAD PLATING.

DIMENSIONS SHOWN METRIC INCH		MFG. SH.	REV.	LTR.	REVISIONS
1	2	3	4	5	6
TITLE: CRIMP TERMINAL					
18 TO 24 AWG WIRE					
MOLEX INCORPORATED SHEET NO. 1 OF 1 DATE 3/2/95					
SEE CHART SD-2477-****					
SCALE: 1:1					

AC	LEAD FREE	USP-2004-1874
AB	REVISE PLATING	USP-2004-1184
AA	565 WAS 557	4-8-95 SAMIEC
AA	ECR US0954	4-8-95 SAMIEC
Z	REDRAW & RENUMBER	ECR US8809
Z	3-2-95 SAMIEC	