

# 3.0mm PITCH PROBE PIN CONNECTOR

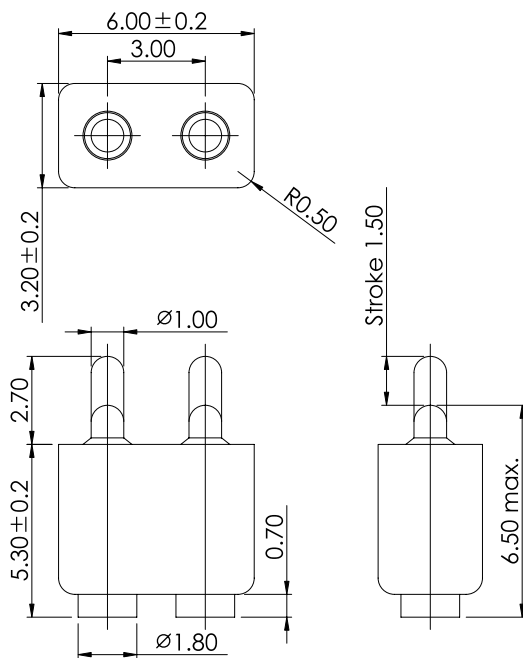
## PIN BATTERY (H:8mm)



### 060135MA Series

#### Specifications:

- **Insulator Material** : Black High Temp. Plastic
- **Operating Type Range** : -40°C TO +105°C
- **Terminal Material** : Brass
- **Platings** : Contact Gold Plated
- **Max. Current Rating** : 1.0A
- **Max. Voltage Rating** : 200V AC
- **Dielectric Strength** : 500V AC For 60 Seconds



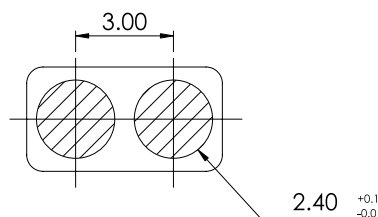
### Order Information

060135MA002□□00ZR  
 1 2 3 4 5

1. 'A' : Straight SMT Type
2. No. of pins.
3. Plating
4. Color 'Z' : Black
5. Package

'R' : Reel Package With Cap  
 Reference Page 11

### Recommended P.C.B Layout



Mobile

BATTERY