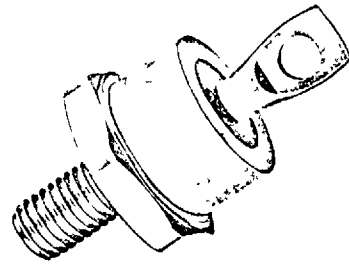
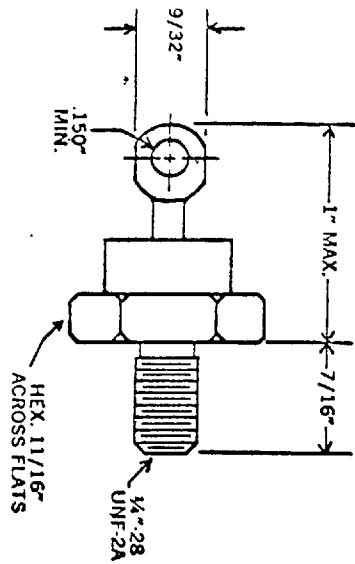


T-01-19



$B_v$  \_\_\_\_\_  
 PIV SEE CHART  
 $I_o$  35A @ 115 °C  
 $I_s$  500 AMPS  
 $V_f$  1.4 v @ 35A @ \_\_\_\_\_ °C  
 $I_r$  SEE CHART @ PIV @ 115 °C  
 BULK AVALANCHE TEST @ \_\_\_\_\_ °C

STYLE DO-5  
 STAMP \_\_\_\_\_

EQUIV. TO F4 9 \_\_\_\_\_ EXCEPT TEST & STAMP

PART NUMBER	PIV	$I_r$
1N4525	200	3.5mA
1N4526	400	3.5mA
1N4527	600	3.5mA
1N4528	800	3.5mA
1N4529	1000	3.5mA
1N4530	1200	3.5mA

REV.	DESCRIPTION	BY	DATE
	DRAWN DV	APP <i>[Signature]</i>	DATE 6/28/74
<b>EDAL INDUSTRIES INC.</b> EAST HAVEN, CONN. 06512			
TOLERANCES UNLESS OTHERWISE NOTED		FRACTIONS ±      DECIMALS ±	
TITLE SILICON RECTIFIER		DWG. NO. 1N4525 - 1N4530	