

Pushbutton Switches

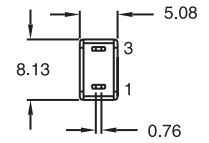
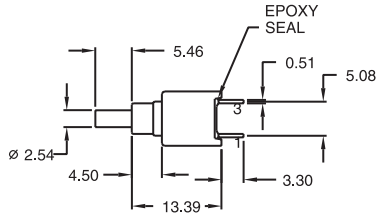
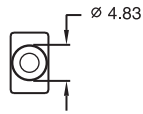
Sealed Sub-Miniature Pushbutton Switches

PB4 Series

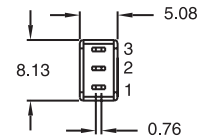
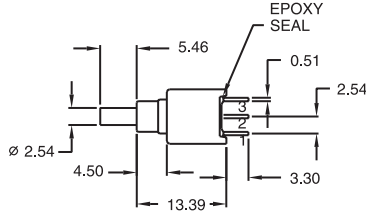
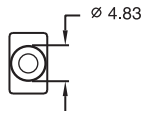
Pushbutton Switches



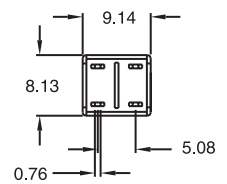
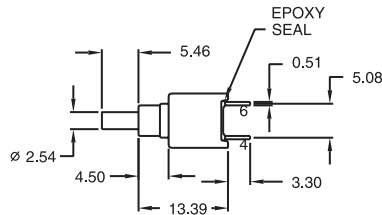
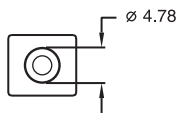
PB4SFT2



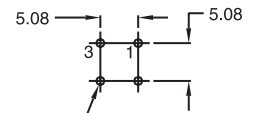
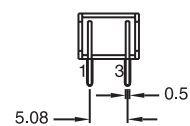
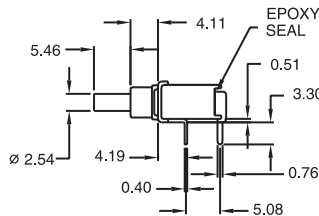
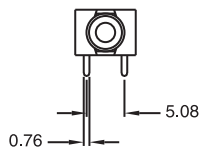
PB4SNT2



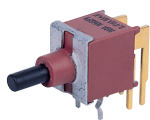
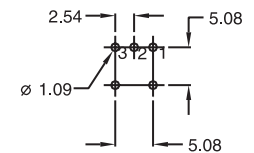
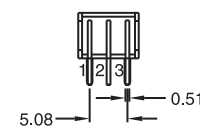
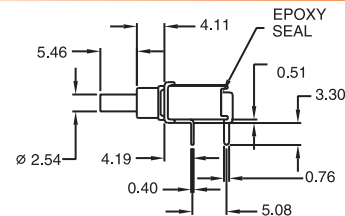
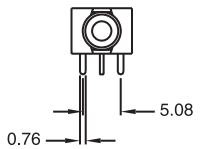
PB4DFT2



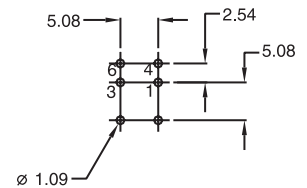
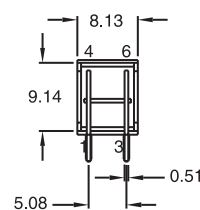
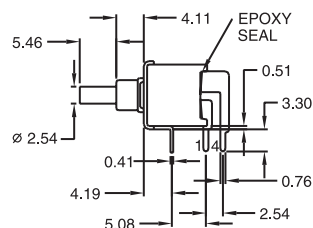
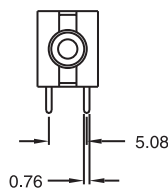
PB4SFT6



PB4SNT6



PB4DFT6



How to order:

PB4

1 POLES & SWITCHING:
 SN SP ON-MOM
 SF SP OFF-MOM
 DF DP OFF-MOM

2 TERMINALS:
 T1 Solder Lug
 T2 PC thru-hole
 T5 Wire wrap
 T6 Right angle, PC thru-hole
 T6N Right angle, snap-in, PC thru hole
 T7 Vertical right angle, PC thru hole
 T7N Vertical right angle, snap-in, PC thru-hole
 VS2 9,30 mm high, V-bracket
 V2N 9,30 mm high, snap-in V-bracket

3 CONTACT MATERIAL:
 AG Silver
 AU Gold
 UT Gold, tin-lead
 GT Silver, tin-lead
 UG Gold over silver
 UGT Gold over silver, tin-lead

4 SEAL:
 E Epoxy (Standard)

5 ROHS & LEAD FREE:
 blank RoHS compliant
 V RoHS & lead free

6 CAP:
 C2 Cap2
 C5 Cap5

7 CAP COLOR:
 Black (Standard)
 White
 Red
 Orange
 Yellow
 Green
 Blue
 Brown
 Gray

General Specifications:

MATERIALS

» Movable Contact & Fixed Terminals:
 AG, GT, UG & UGT: Silver plated over copper alloy
 AU & UT: Gold over nickel plated over copper alloy

MECHANICAL

» Operating Temperature: -30°C to +85°C
 » Mechanical Life: 50,000 cycles at full load

CONTACT RATING

» AG, GT, UG & UGT: 3A 120VAC/28VDC
 1A 250VAC
 » AU & UT: 0.4VA max. 20V max. (AC/DC)

ELECTRICAL

» Contact Resistance: 20mΩ max. initial @ 2-4VDC
 100mA for silver & gold plated contacts
 » Insulation Resistance: 1,000MΩ min.

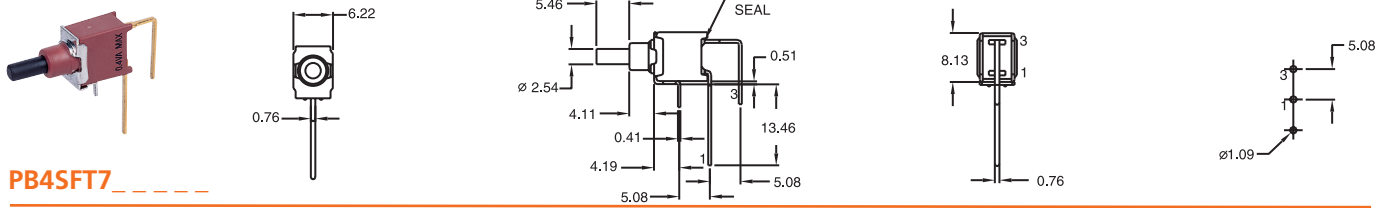
Pushbutton Switches

Sealed Sub-Miniature Pushbutton Switches

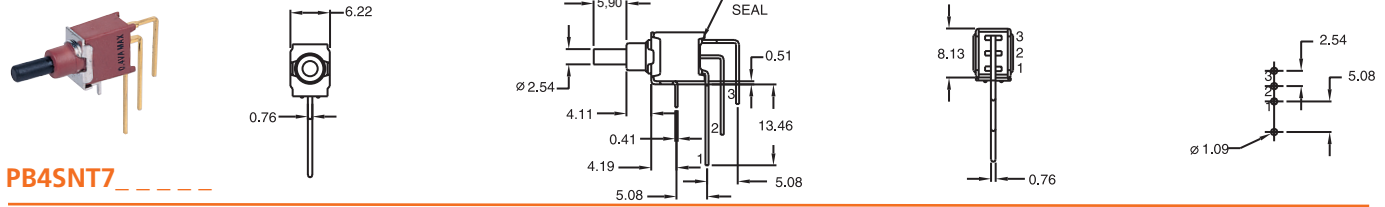
PB4 Series

Pushbutton Switches

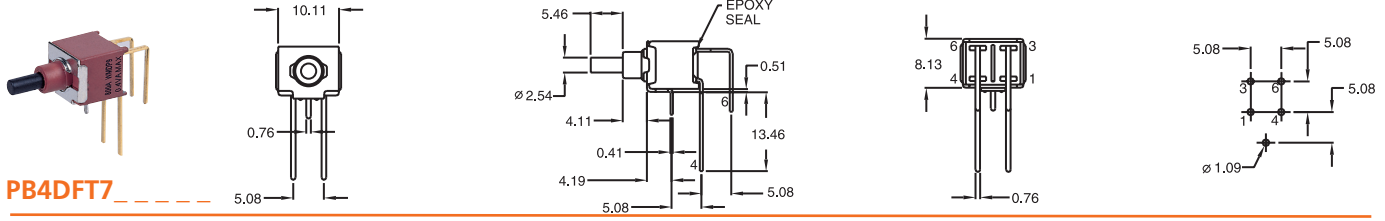
PB4SFT7



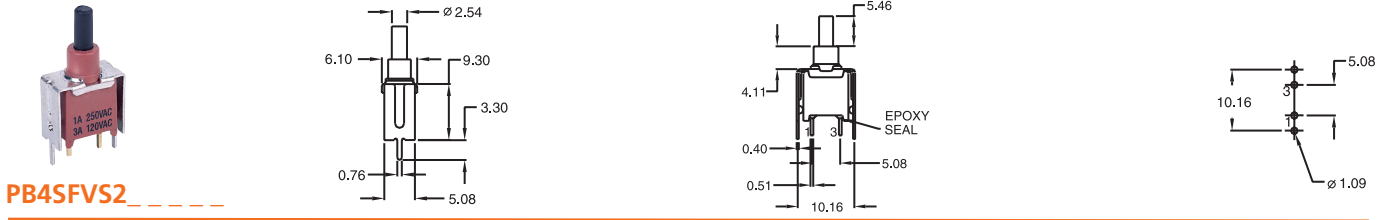
PB4SNT7



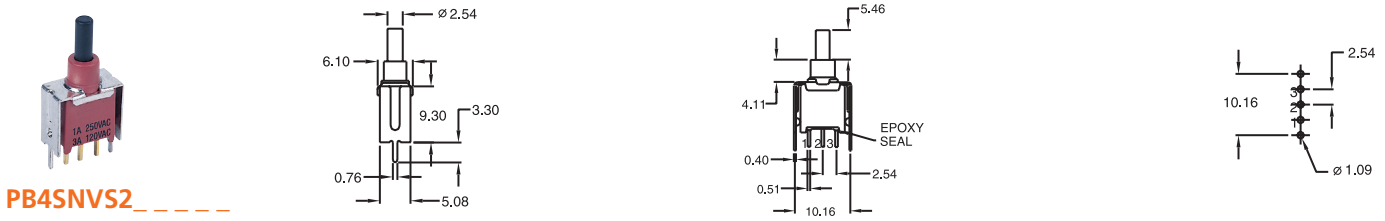
PB4DFT7



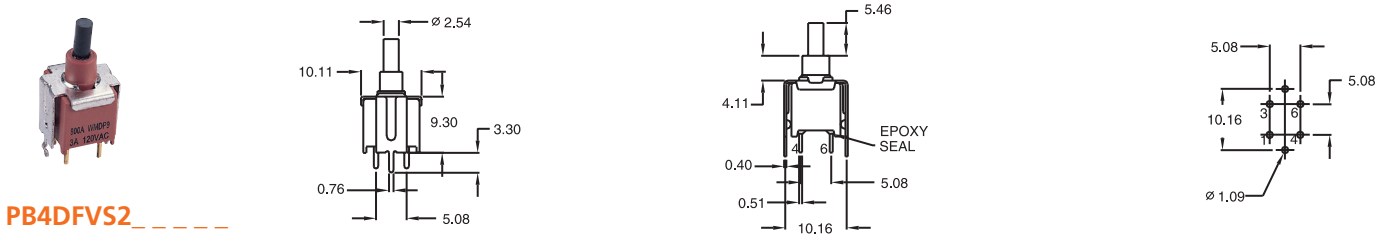
PB4SFVS2



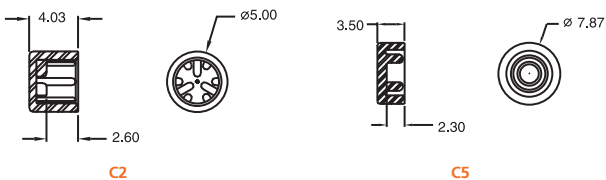
PB4SNVS2



PB4DFVS2



CAPS (Colors: white, black, green, red)

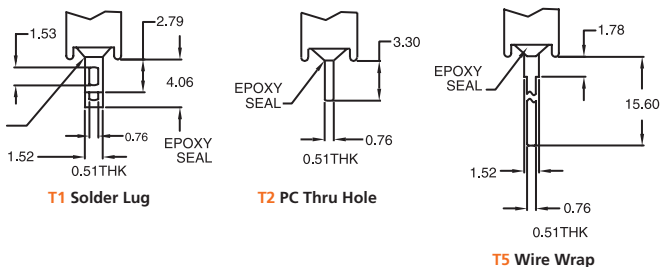


SWITCH FUNCTION

| NO. POLES | MODEL NO. | SWITCH FUNCTION | | CONNECTED TERMINALS | | SCHEMATIC |
|-----------|-----------|-----------------|-------|---------------------|---------|-----------|
| | | POS.1 | POS.2 | POS.1 | POS.2 | |
| SP | PB4SN | ON | MOM | 2-1 | 2-3 | |
| | PB4SF | OFF | MOM | OPEN | 1-3 | |
| DP | PB4DF | OFF | MOM | OPEN | 1-3,4-6 | |

MOM=MENTORARY

TERMINAL OPTIONS



SNAP-IN TERMINAL OPTIONS

