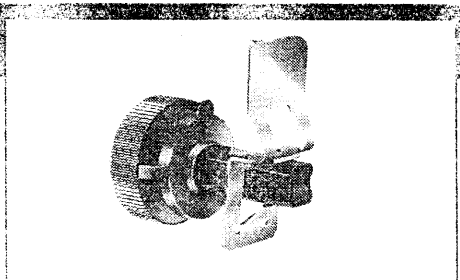


# PAWL LATCHES - DP 137



This fastener assembly provides basic quarter turn operation at low installed cost. The plastic studs are available in 3 head styles and combine with spring steel pawl which is rapidly installed by pushing onto the shank of the stud. One way tabs on the pawl maintain its position and provide secure stud retention during operation.

**TECHNICAL INFORMATION**  
**MATERIAL THICKNESS RANGE**  
 1 (.04") Min. - 12 (.47") Max.

**PAWL DEFLECTION**  
 Min. : 0.25 (.010")  
 Max. : 3.0 (.12")

**LOCKED TENSION**  
 Min. : 900g (2lb) at 0.25  
 Max. : 3600g (8lb) at 3.0

**TEMPERATURE RANGE**  
 Min. : -40°C  
 Max. : 90°C  
 (Short intermittent periods 120°C Max.)

**INSTALLATION**

1. Prepare panel by drilling or punching a hole:—  
 $\varnothing 8,0 \pm 0,2$  (.315 ± .008")  
 -0 -0

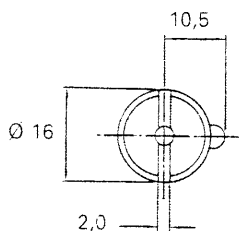
2. Insert stud through hole (add spacer if required) and press on the pawl finger. Note: Groove on stud ensures one way fitting.

**PARTS SELECTION**

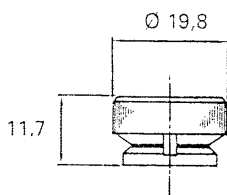
1. Difference in thickness between panel and support cannot exceed 3mm (max. deflection).
2. Spacers (3mm thick) must be used to maintain deflection in range given.
3. Spacers will be required when the support thickness is greater than 3,0 (.120") max. 3 per assembly i.e. 3-6mm - 1 spacer, 6-9 mm - 2 spacers, 9-12 mm - 3 spacers.

**FASTENER CALL-UP**

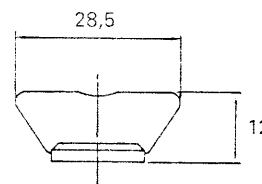
STUD	—	Slotted	DP 137-1
	—	Knob Head	DP 137-1K
	—	Wing Head	DP 137-1W
PAWL	—		DP 137-2
SPACER	—		DP 137-3



DP137-1



DP137-1K



DP137-1W

