

Features

- Frequency Range: 10~1500MHz
- Active Bias Design Supply Temperature Compensation
- Standard Hermetic Package
- Operating Temperature Range: -55°C ~ +85°C

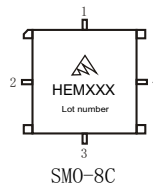
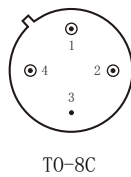
Specifications (50 Ω, V_{CC} = +5V, T_A = -55°C ~ +85°C)

Parameter	Symbol	Unit	Guaranteed	Typical
Frequency Range	f _L ~f _H	MHz	10~1500	10~1500
Gain	G _p	dB	≥11.0	11.5
Gain Flatness	ΔG _p	dB	≤±0.5	±0.3
Noise Figure	F _n	dB	≤4.0 Δ	--
Input VSWR	VSWR _i	--	≤2.0:1	1.7:1
Output VSWR	VSWR _o	--	≤2.0:1	1.6:1
Output Power @ 1dB Compression	P ₋₁	dBm	≥9.0 * Δ	10.0
DC Current	I _{CC}	mA	--	30

*f = 1000MHz; "Δ" T_A = 24 ± 1°C;

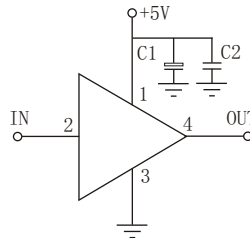
Maximum Rating

- DC Voltage : +6VDC
- RF Input: +10dBm
- Storage Temp: +125°C



Application Notes

1. Typical application shown as right, C₁ = 3.3~22 μF ; C₂ = 3300~6800pF;
2. Interchanged directly with A16-2 from W-J Company;
3. See assembly section for mounting information
4. Connectorized package(SMA-1) available



Typical Curves

