

PLEASE CHECK WWW.MOLEX.COM FOR LATEST PART INFORMATION

Part Number: [0676873550](#)
Status: **Active**
Description: 2.54mm (.100") Pitch SIM Card Connector, Surface Mount, 6 Circuit, 3.50mm (.138") Housing Height, Lead Free

Documents:

[3D Model](#) [Product Specification PS-67687-001 \(PDF\)](#)
[Drawing \(PDF\)](#) [RoHS Certificate of Compliance \(PDF\)](#)

General

| | |
|----------------|--------------------------------|
| Product Family | Memory Card Sockets |
| Series | 67687 |
| Button Type | N/A |
| Comments | Housing Height: 3.50mm (.138") |
| Component Type | Header/Socket (Host) |
| Product Name | SIM |
| Type | N/A |

Physical

| | |
|--------------------------------|--------------------------------|
| Card Detection Switch | N/A |
| Circuits (Loaded) | 6 |
| Circuits (maximum) | 6 |
| Color - Resin | Black |
| Durability (mating cycles max) | 10,000 |
| Ejector Button Side | No Ejector Button Present |
| Entry Angle | N/A |
| Keying to Mating Part | None |
| Material - Metal | Phosphor Bronze |
| Material - Plating Mating | Gold |
| Material - Plating Termination | Tin |
| Material - Resin | High Temperature Thermoplastic |
| PCB Locator | No |
| PCB Mounting Side | Normal |
| PCB Retention | None |
| Packaging Type | Embossed Tape on Reel |
| Pitch - Mating Interface (in) | 0.100 In |
| Pitch - Mating Interface (mm) | 2.54 mm |
| Pitch - Term. Interface (in) | 0.100 In |
| Pitch - Term. Interface (mm) | 2.54 mm |
| Plating min: Mating (µin) | 30 |
| Plating min: Mating (µm) | 0.76 |
| Plating min: Termination (µin) | 2 |
| Plating min: Termination (µm) | 0.05 |
| Ports | 1 |
| Temperature Range - Operating | -40°C to +85°C |
| Termination Interface: Style | Surface Mount |

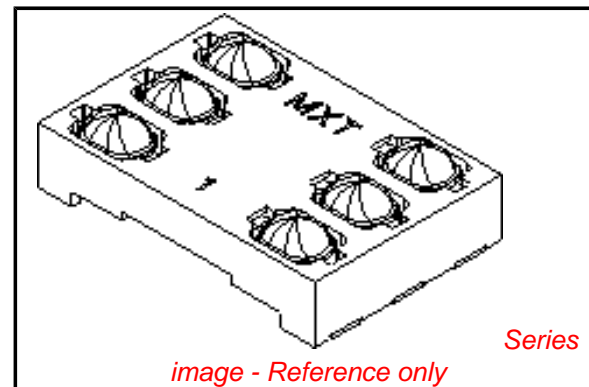
Electrical

| | |
|-------------------------------|--------|
| Current - Maximum per Contact | 0.5A |
| Shielded | No |
| Voltage - Maximum | 50V DC |

Material Info

Reference - Drawing Numbers

| | |
|-----------------------|--------------|
| Product Specification | PS-67687-001 |
| Sales Drawing | SD-67687-511 |



EU RoHS

**ELV and RoHS
Compliant**
REACH SVHC
 Not Reviewed
**Halogen-Free
Status**

China RoHS



Not Reviewed

**Need more information on product
environmental compliance?**

Email productcompliance@molex.com
 For a multiple part number RoHS Certificate of
 Compliance, [click here](#)

Please visit the [Contact Us](#) section for any
 non-product compliance questions.

Search Parts in this Series

[67687Series](#)

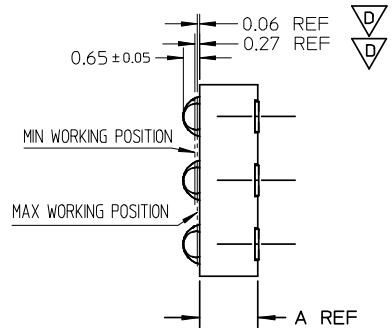
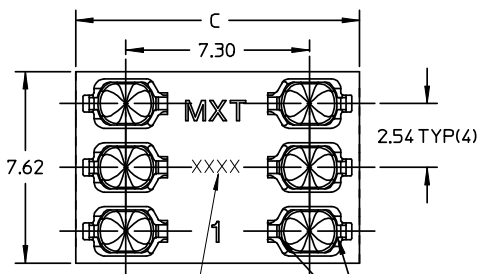
Mates With

Standard SIM Card

This document was generated on 03/31/2010

PLEASE CHECK WWW.MOLEX.COM FOR LATEST PART INFORMATION

10 9 8 7 6 5 4 3 2 1



| DIMENSION E | DIMENSION D | DIMENSION C | DIMENSION A | PART NUMBER |
|-------------|-------------|-------------|-------------|-------------|
| 9.95 | 1.00 | 11.30 | 1.80 | 67687-1850 |
| 10.05 | 1.20 | 11.70 | 2.00 | 67687-2050 |
| 9.95 | 1.00 | 11.30 | 2.30 | 67687-2350 |
| 9.95 | 1.00 | 11.30 | 2.45 | 67687-2550 |
| 9.95 | 1.00 | 11.30 | 2.90 | 67687-2950 |
| 9.95 | 1.00 | 11.30 | 3.50 | 67687-3550 |

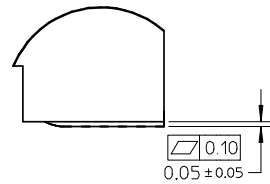
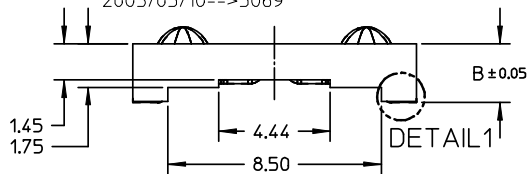
*.DIMB=DIMA+0.05

DATE CODE (INK JET)

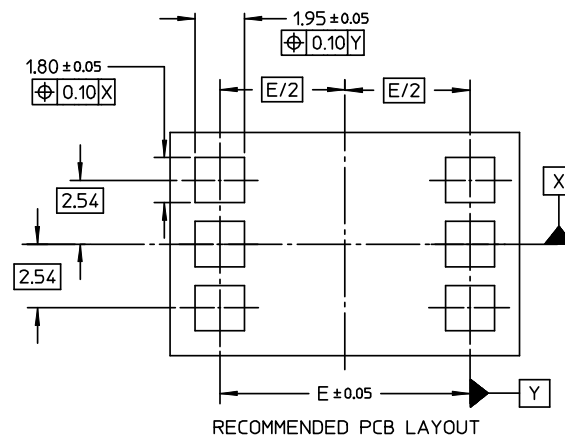
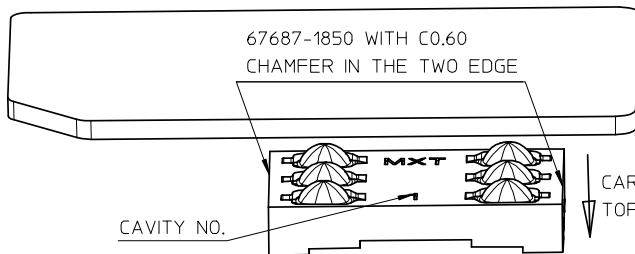
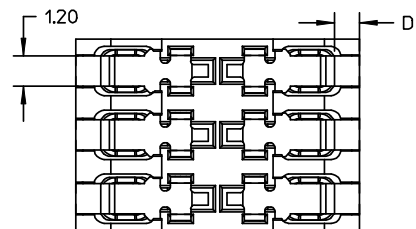
X X X X _ DAY COUNTED FROM FIRST
 _ _ _ _ DAY OF THE YEAR
 _ _ _ _ -YEAR

EX. 2002/01/15-->2015
 2002/02/10-->2041
 2003/03/10-->3069

VISIBLE AREA



DETAIL1



NOTES:

- 1 MATERIAL:
HOUSING: HIGH TEMPERATURE PLASTIC,
TERMINAL: COPPER ALLOY
- 2. PLATING:
CONTACT AREA PLATING:
30u" MIN GOLD OVER 50u" MIN NICKEL PLATING
SOLDERING AREA PLATING:
100u" MIN PURE TIN OVER 50u" MIN NICKEL PLATING
VISIBLE AREA PLATING:
GOLD FLASH OVER 50u" MIN NICKEL PLATING
- 3. PACKAGING: TAPE REEL
- 4. PRODUCT SPECIFICATION: PS-67687-001
- 5. COMPLIANT TO RoHS DIRECTIVE 2002/95/EC AND
ELV DIRECTIVE 2000/53/EC.

| | | | |
|---|------------|--------------|-------------|
| RELEASE EC NO: SH2008-0471 DRW: PFCU CHKD: YLZHUO APPR: HWANG | 2008/03/25 | 2008/04/11 | 2008/07/02 |
| | DRW: PFCU | CHKD: YLZHUO | APPR: HWANG |
| | 2008/03/25 | 2008/04/11 | 2008/07/02 |
| | DRW: PFCU | CHKD: YLZHUO | APPR: HWANG |

| QUALITY SYMBOLS | GENERAL TOLERANCES (UNLESS SPECIFIED) | |
|-----------------|---------------------------------------|-------|
| | mm | INCH |
| ▽=0 | 4 PLACES ± --- | ± --- |
| ▽=0 | 3 PLACES ± --- | ± --- |
| ▽=0 | 2 PLACES ± 0.05 | ± --- |
| ▽=0 | 1 PLACE ± 0.10 | ± --- |
| | ANGULAR ± 2 ° | |

| DIMENSION STYLE | | SCALE | DESIGN UNITS | THIRD ANGLE PROJECTION |
|-----------------|--------------|--------------------------------------|--------------|------------------------|
| MM ONLY | | 5:1 | METRIC | THIRD ANGLE PROJECTION |
| DRAWN BY | DATE | TITLE | | |
| SSUN | 2004/11/04 | 6 CKTS SIM CARD CONNECTOR SD DRAWING | | |
| CHECKED BY | DATE | | | |
| RZHAO | 2004/11/04 | | | |
| APPROVED BY | DATE | | | |
| SAMHUANG | 2004/11/04 | | | |
| MATERIAL NO. | DOCUMENT NO. | | | |
| SEE TABLE | SD-67687-511 | | | |

| | | |
|---|--|-----------|
| MOLEX INCORPORATED | | SHEET NO. |
| | | 1 OF 1 |
| THIS DRAWING CONTAINS INFORMATION THAT IS PROPRIETARY TO MOLEX INCORPORATED AND SHOULD NOT BE USED WITHOUT WRITTEN PERMISSION | | |

9 8 7 6 5 4 3 2 1