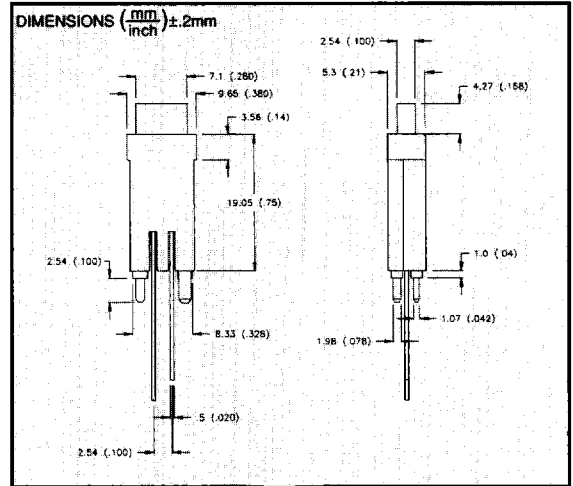


**SSI-LXH8344XX SERIES RECTANGULAR P.C. MOUNT INDICATOR**

FEATURES		APPLICATIONS		MATERIAL SPECIFICATIONS			
<ul style="list-style-type: none"> <li>• Easy Installation</li> <li>• High Contrast Holder</li> <li>• Four Color Options</li> <li>• Bi-Color Option</li> </ul>		<ul style="list-style-type: none"> <li>• Front Panel Indicator</li> <li>• Status Annunciator</li> <li>• Go-No Go Condition Indicators</li> </ul>		<ul style="list-style-type: none"> <li>• Holder: Black Nylon</li> <li>• Terminations: 0.5mm □ Leads</li> <li>• Insulated Leads Available</li> <li>• Installation: P.C. Mount</li> </ul>			
LUMEX PART NBR	EMITTED COLOR	OPERATING CURRENT (mA)	OPERATING TYP Volts (V)	BRIGHTNESS TYP (mCD) @	LED SERIES USED		
SSI-LXH8344ID	RED	635	10-25	2.1	8	20	SSL-LX25783XX
SSI-LXH8344SRD	RED	660	10-25	1.7	35	20	SSL-LX25783XX
SSI-LXH8344GD	GREEN	565	10-25	2.1	8	20	SSL-LX25783XX
SSI-LXH8344YD	YELLOW	585	10-25	2.1	8	20	SSL-LX25783XX
<b>BI-COLOR OPTION</b>							
SSI-LXH8344HGW	RED/GREEN	695/565	10-25	2.1	6/6	20	SSL-LX25783HGW

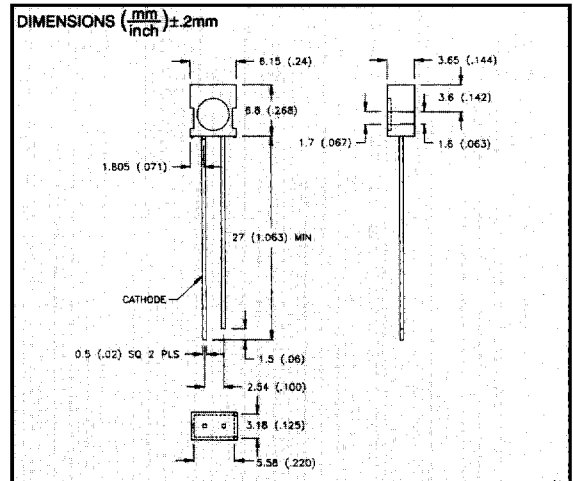
See pages 8 - 14 for Max. operating limits and operating curves



**SSL-LX4673XX SERIES 4x7 RECTANGULAR LEDS W/JACKET**

FEATURES		APPLICATIONS		OPTIONS AVAILABLE			
<ul style="list-style-type: none"> <li>• Four Color Options</li> <li>• Stackable Package</li> <li>• Long Life/Low Power</li> <li>• Bi-Color Option</li> </ul>		<ul style="list-style-type: none"> <li>• Panel Indicators</li> <li>• Status Illuminators</li> <li>• Switches/Keyboards</li> </ul>		<ul style="list-style-type: none"> <li>• Add-on Spacers</li> <li>• Panel Mounting Hardware</li> </ul>			
LUMEX PART NBR	EMITTED COLOR	EPOXY LENS COLOR	BRIGHTNESS TYP.(mcd.)	VIEW ANGLE	Vt@20mA		
SSL-LX4673ID-LA20	RED	RED DIFF.	12	20	8	2.0	2.8
SSL-LX4673SRD-LA20	RED	RED DIFF.	40	20	80	1.7	2.2
SSL-LX4673GD-LA20	GREEN	GREEN DIFF.	12	20	80	2.1	2.8
SSL-LX4673YD-LA20	YELLOW	YELLOW DIFF.	12	20	80	2.1	2.8
<b>BI-COLOR OPTIONS</b>							
SSL-LX4673HGW-LA20	RED/GREEN	WHITE DIFF.	6/6	20/20	80	2.0	2.8

See pages 8 - 14 for Max. operating limits and operating curves



**SSB-LX2X00 SERIES 5x10mm (2) CHIP LIGHT BARS**

FEATURES		APPLICATIONS		OPTIONS AVAILABLE			
<ul style="list-style-type: none"> <li>• Chips On Board Style</li> <li>• Reflective Case</li> <li>• Four Colors</li> <li>• HP Light Bar Compatible</li> <li>• Low Cross-Talk Case</li> </ul>		<ul style="list-style-type: none"> <li>• Back Lighting</li> <li>• Graphics Illumination</li> <li>• Ladder Indicators</li> <li>• Logo Illumination</li> </ul>		<ul style="list-style-type: none"> <li>• Bi-Color Circuits</li> <li>• Fixed Voltage Chips</li> <li>• Graphic Overlays</li> </ul>			
LUMEX PART NBR	EMITTED COLOR	EPOXY LENS COLOR	BRIGHTNESS TYP.(mCD)	VIEW ANGLE	Vt@20mA		
SSB-LX2300ID	RED	RED DIFF.	25	20	160	2.1	2.8
SSB-LX2300IW	RED	WHITE DIFF.	25	20	160	2.1	2.8
SSB-LXA100SRD	RED	RED DIFF.	50	20	160	1.8	2.1
SSB-LXA100SRW	RED	WHITE DIFF.	50	20	160	1.8	2.1
SSB-LX2400YD	YELLOW	WHITE DIFF.	20	20	160	2.1	2.8
SSB-LX2400YW	YELLOW	WHITE DIFF.	20	20	160	2.1	2.8
SSB-LX2500SGD	GREEN	GREEN DIFF.	25	20	160	2.1	2.8
SSB-LX2500SGW	GREEN	WHITE DIFF.	25	20	160	2.1	2.8
SSB-LX2400AD	AMBER	AMBER DIFF.	20	20	160	2.1	2.8
SSB-LX2400AW	AMBER	WHITE DIFF.	20	20	160	2.1	2.8

**H.P. Equivalents With Noryl Low Cross Talk Cases**

See pages 8-14 for Max. operating limits and operating curves

