

# POWER DIVIDERS, 12 WAY - 0°

Frequency Range (MHz)	Insertion Loss (dB) max.	Isolation (dB) min.	Amplitude Balance (dB) max.	Phase Balance (Deg) max.	VSWR max.	(1) Input Power (watts) max.	P/N
2-100	1.5	25	0.2	4.0	1.40:1	1	P12-01-*
10-500	1.6	20	0.3	4.0	1.40:1	1	P12-02-*
100-1000	2.2	20	0.5	8.0	1.40:1	1	P12-03-*
800-1500	3.5	18	0.6	10.0	1.40:1	1	P12-04-*

\* Available in outline # 409

Note: (1) For Load VSWR better than 1.2:1.

# POWER DIVIDERS, 16 WAY - 0°

Frequency Range (MHz)	Insertion Loss (dB) max.	Isolation (dB) min.	Amplitude Balance (dB) max.	Phase Balance (Deg) max.	VSWR max.	(1) Input Power (watts) max.	P/N
0.01-30	1.2	25	0.2	3.0	1.40:1	1	P16-01-456/1*
0.5-125	1.2	20	0.3	5.0	1.40:1	1	P16-02-456/1*
1-200	1.4	20	0.5	8.0	1.40:1	1	P16-03-456/1*
1-500	2.0	20	0.6	10.0	1.50:1	1	P16-04-456/1*
20-1600	5.0	18	0.6	10.0	1.60:1	1	P16-05-456/1*
200-2000	8.0	16	0.8	12.0	1.80:1	1	P16-06-456/1*

\* Available with SMA & N connectors - Specify by adding S or N suffix to P/N

Note: (1) For Load VSWR better than 1.2:1.

# POWER DIVIDERS, 32 WAY - 0°

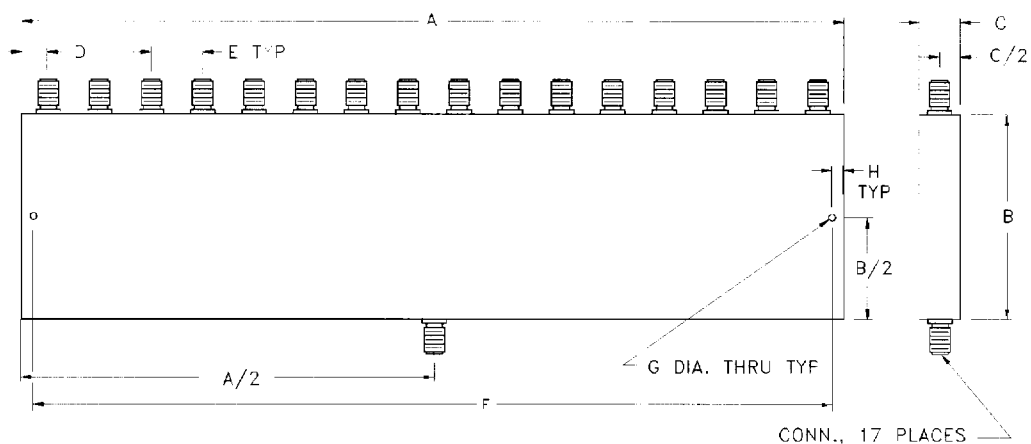
Frequency Range (MHz)	Insertion Loss (dB) max.	Isolation (dB) min.	Amplitude Balance (dB) max.	Phase Balance (Deg) max.	VSWR max.	(1) Input Power (watts) max.	P/N
0.01-30	1.5	22	0.3	5.0	1.50:1	1	P32-01-457/1*
0.05-100	1.6	20	0.5	9.0	1.50:1	1	P32-02-457/1*
1-200	1.8	20	0.8	12.0	1.60:1	1	P32-03-457/1*
1-500	3.0	18	0.8	15.0	1.80:1	1	P32-04-457/1*

\* Available with SMA & N connectors - Specify by adding S or N suffix to P/N

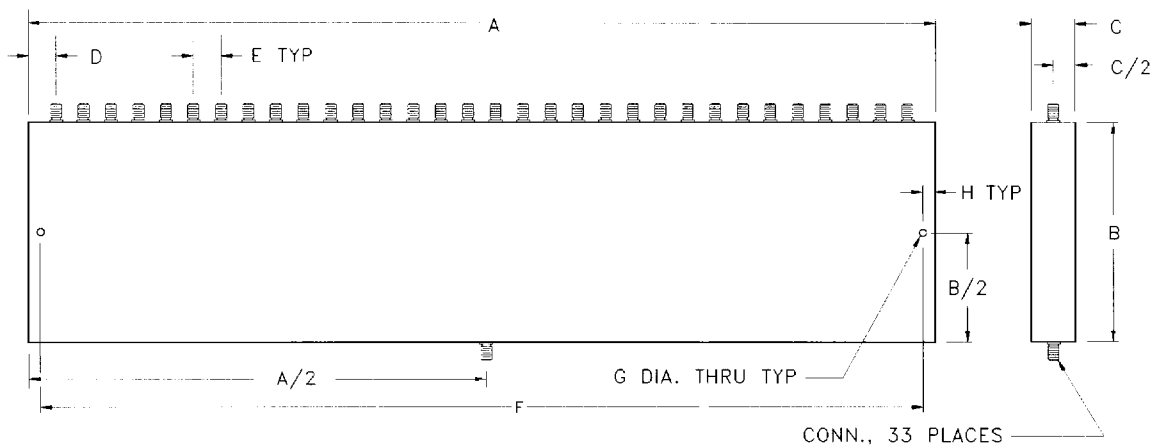
Note: (1) For Load VSWR better than 1.2:1.

# POWER DIVIDERS, MULTI-WAY - 0°

Power Dividers  
Lumped Element

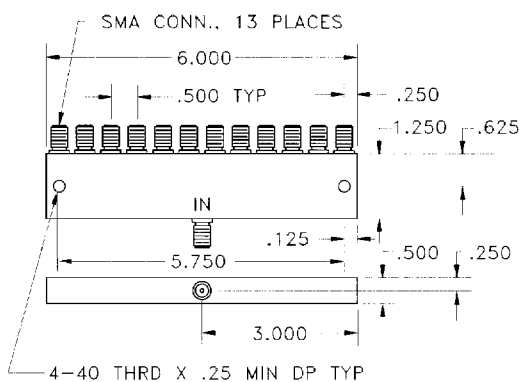


Outline 456



Outline 457

OUTLINE	CONN.	A	B	C	D	E	F	G	H
456/1S	SMA	6.40	2.85	0.40	.20	0.40	5.90	.149	.250
456/1N	N	16.00	2.90	1.00	.50	1.00	15.50	.149	.250
457/1S	SMA	12.80	3.50	0.40	.20	0.40	12.30	.149	.250
457/1N	N	32.00	3.60	1.00	.50	1.00	31.50	.149	.250



Outline 409