

0.325" Pitch, Series 4DB

PHYSICAL PROPERTIES

HOUSING MATERIAL: Thermoplastic Polyamide
FLAMMABILITY: UL94V-0
COLOR: Black

TERMINAL

TERMINALS: Bright acid-tin over copper alloy
SCREWS: #6-32 steel, zinc plating with clear chromate coating, undercut binding head screw standard.

MECHANICAL

PITCH (TERMINAL SPACING): 0.325"
RECOMMENDED PCB HOLE DIA.: 1.7mm (0.07")

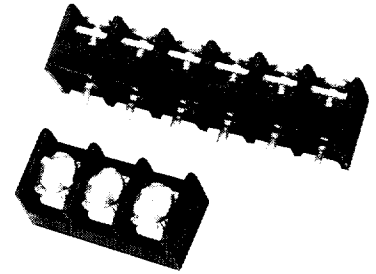
ELECTRICAL PROPERTIES

MAXIMUM CURRENT: 20A
OPERATING VOLTAGE: 150V (UL), 300V (CSA)
WIRE RANGE: 14-22 AWG

ENVIRONMENTAL PROPERTIES

OPERATING TEMPERATURE RANGE: 105°C max.

Note: Before ordering, see Cross Reference in Section 15 for equivalent Tyco Electronics Part Number.



4DB-P108-##

ORDERING INFORMATION

4DB - P 1 08 - 06

A
B
C
D
E

- A Series**
4DB = Dual-Barrier, 0.325" Centers

- B Terminal Style**
P = Printed Circuit Pin
W = Wire Wrap
R = Right Angle
S = Non-Feed Thru

- C Block Style**
1 = Flat, all positions filled
2 = Flat, end mounting holes

- D Screw Type**
04 = Steel wire clamp slotted head screws
07 = Steel binding combo head screws
08 = Steel wire clamp combo head screws

- E No. of Circuits (Not Positions)**
02 through 30

For complete product information, order Catalog 1308389

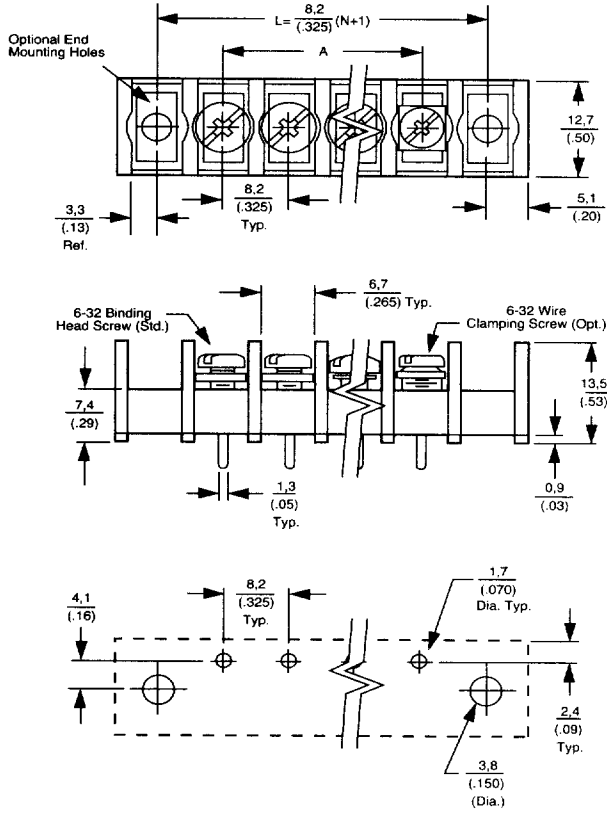


LR30811 E54800

0.325" Pitch, Series 4DB

Dimensions

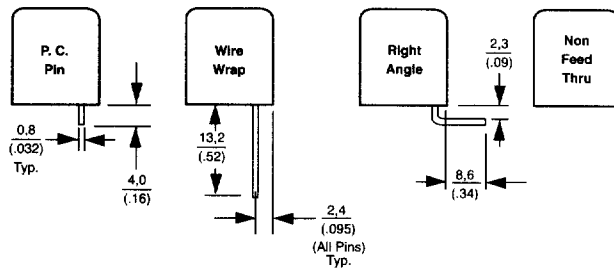
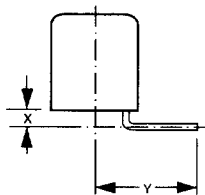
TERMINALS	A	TERMINALS	A
2	(0.325) 8,2	17	(5.200) 132,1
3	(0.650) 16,5	18	(5.525) 140,3
4	(0.975) 24,8	19	(5.850) 148,6
5	(1.300) 33,0	20	(6.175) 156,8
6	(1.625) 41,3	21	(6.500) 165,1
7	(1.950) 49,5	22	(6.825) 173,3
8	(2.275) 57,8	23	(7.150) 181,6
9	(2.600) 66,0	24	(7.475) 190,0
10	(2.925) 74,3	25	(7.800) 198,1
11	(3.250) 82,5	26	(8.125) 206,4
12	(3.575) 90,8	27	(8.450) 214,6
13	(3.900) 99,1	28	(8.775) 222,8
14	(4.225) 107,3	29	(9.100) 231,1
15	(4.550) 115,6	30	(9.425) 239,4
16	(4.875) 123,8		



PRINTED CIRCUIT BOARD LAYOUT

Bend Options:

A variety of bend options are available. Please consult Technical Support Center for details.



For complete product information, order Catalog 1308389



Terminal Blocks

8067