

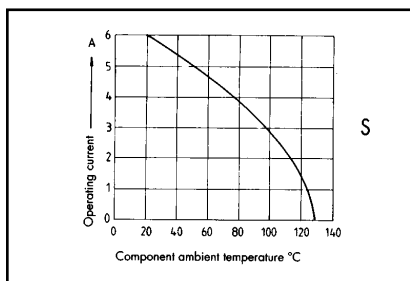
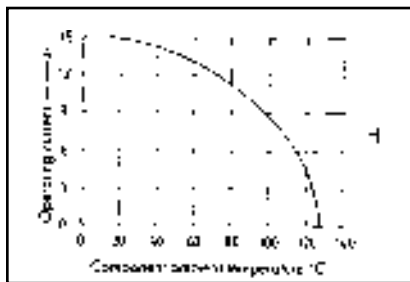
DESCRIPTION/APPLICATION

The Buchanan® Type F24+H7 (Series M) mixed connectors are created with seven high current contacts that correspond to Type H and 24 signal contacts that correspond with Type F. The connectors comply with technical requirements and mounting specifications of DIN 41612.

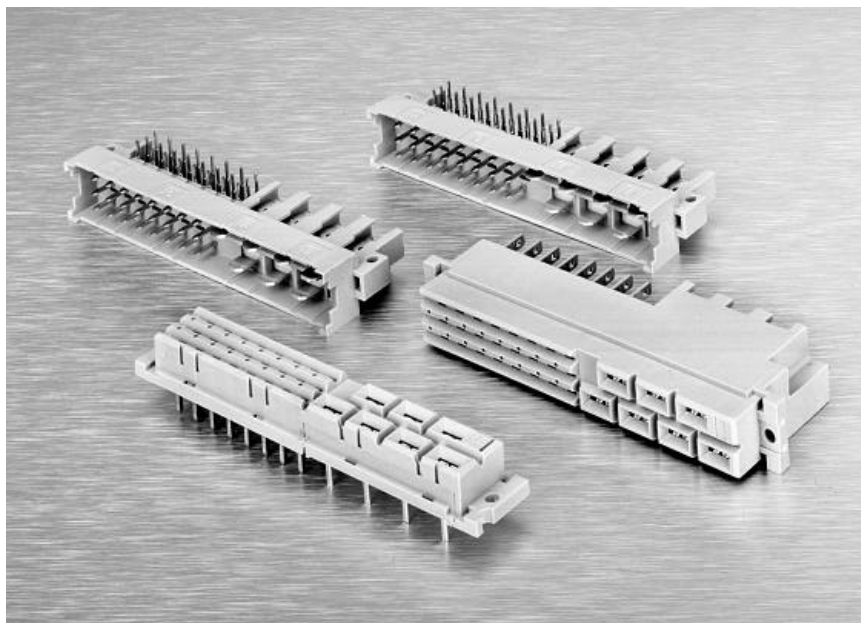
DESIGN ADVANTAGES

- Slimline versions of F24+H7 female connectors developed especially for use in bus systems.
- Male and slimline versions of female connectors are designed with an integrated coding device to guard against misconnection.

DERATING CURVES



TYPE F24+H7 (SERIES M) MIXED CONNECTORS

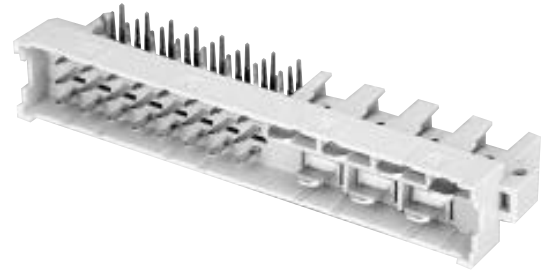


CONNECTOR INDEX

F24+H7 Male, without Coding Device	137
F24+H7 Male, with Coding Device	138
F24+H7 Female, Polycarbonate	139
F24+H7 Female, PBT	140



SERIES F24+H7 (SERIES M) MALE CONNECTORS WITH CODING DEVICE



PHYSICAL PROPERTIES

HOUSING MATERIAL: PBT
COLOR: Beige
FLAMMABILITY RATING: UL94V-0
INSULATING RESISTANCE: $\geq 10^{12}\Omega$ (Type F)
INSERTION/WITHDRAWAL FORCE: 80N Max.

ELECTRICAL PROPERTIES

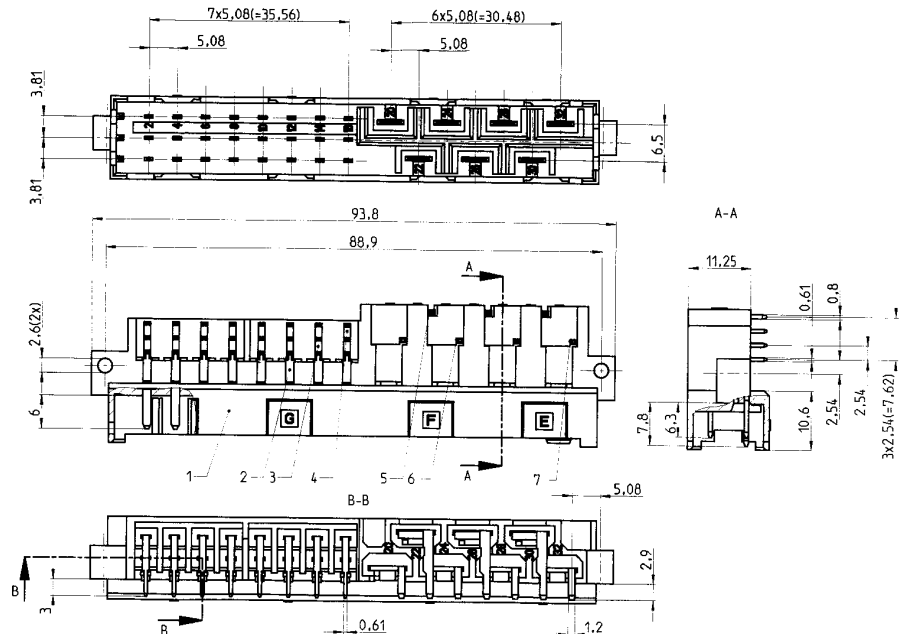
MAXIMUM CURRENT: Type F: 6A
Type H: 15A
(according to derating curve)
OPERATING VOLTAGE: Type F: 125V
Type H: 500V

TEST VOLTAGE V_{eff} :

Type F: 1550V contact to contact
Type H: 3100V contact to contact
Type F: 2500V contact to mass
Type H: 3100V contact to mass

ENVIRONMENTAL PROPERTIES

OPERATING TEMPERATURE RANGE: -55°C to 125°C
SOILING DEGREE PER VDE 0110: 3
AIRSPACE: Type F: $\geq 1,6\text{mm}$; Type H: $\geq 4,5\text{mm}$
LEAKAGE PATH: Type F: $\geq 3\text{mm}$; Type H: $\geq 8\text{mm}$
CONTACT RESISTANCE: Type F: $\leq 15\text{m}\Omega$; Type H: $\leq 8\text{m}\Omega$



Ordering Information

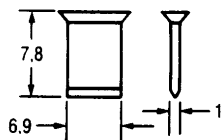
# OF CONTACTS (ROWS)	PERFORMANCE LEVEL	SOLDER PIN 90°	SOLDER PIN 90° EXT. PIN POS. Z32	SOLDER 90° (F PINS) FASTON (H PINS)	SOLDER 90° (F PINS) FASTON (H PINS)
24 +7 Pin (z + b + d)	1				
	2	MM24 W-7W2C	MM24 W-61W2C	MM24 W-7FA2C	MM24 W-61FA2C
	3	MM24 W-7W3C	MM24 W-61W3C	MM24 W-7FA3C	MM24 W-61FA3C
16 +7 Pin (z + b grid 2, 54)	1				
	2	MM16 ZBW-7W2C	MM16 ZBW-61W2C	MM16 ZBW-7FA2C	MM16 ZBW-61FA2C
	3	MM16 ZBW-7W3C	MM16 ZBW-61W3C	MM16 ZBW-7FA3C	MM16 ZBW-61FA3C
16 +7 Pin (z + b/d grid 5, 08)	1				
	2	MM16 ZB-DW-7W2C	MM16 ZB-DW-61W2C	MM16 ZB-DW-7FA2C	MM16 ZB-DW-61FA2C
	3	MM16 ZB-DW-7W3C	MM16 ZB-DW-61W3C	MM16 ZB-DW-7FA3C	MM16 ZB-DW-61FA3C
16 +7 Pin (z + d)	1				
	2	MM16 ZDW-7W2C	MM16 ZDW-61W2C	MM16 ZDW-7FA2C	MM16 ZDW-61FA2C
	3	MM16 ZDW-7W3C	MM16 ZDW-61W3C	MM16 ZDW-7FA3C	MM16 ZDW-61FA3C

ACCESSORIES

POLARIZATION OPTIONS

EXTERNAL PLASTIC POLARIZING KEY—

With loss of a contact
For types H11, H15, H15/HA, F24/H7
(Customer installed)



Polarizing Key HCOMK installed in Type H11 female connector — The removal of the corresponding male terminal is required.

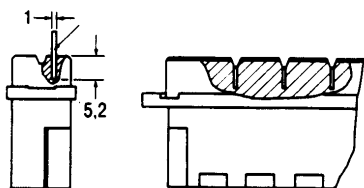
Catalog No. HCOMK

EXTERNAL POLARIZING KEY—

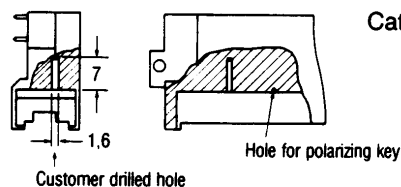
Without loss of a contact
For types H15, H15/HA, F24+H7 (No drilling required on Type F24+H7)
(Customer installed)



FEMALE CONNECTOR



MALE CONNECTOR

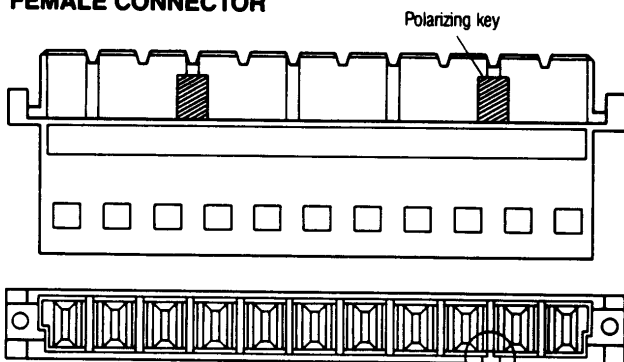


Catalog No. HCOOK

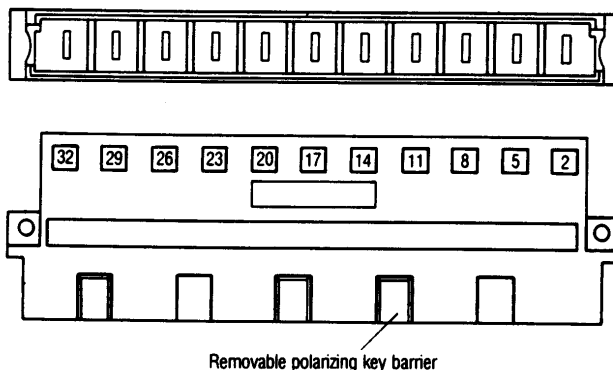
INTEGRAL POLARIZING KEY—

Without loss of a contact
For types H11, H15, H15/HA, F, and F24+H7 with Integral Polarization Capability
(Customer installed)

FEMALE CONNECTOR



MALE CONNECTOR



Catalog No. H11COOK