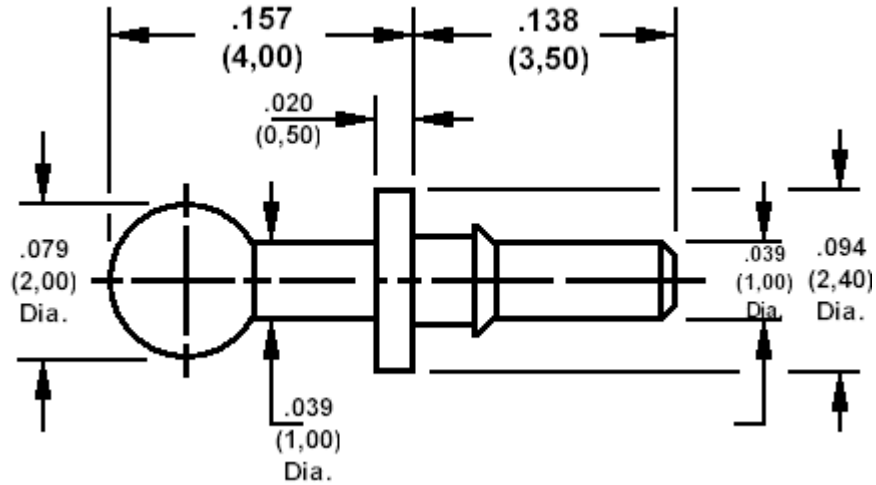


## 460-8450 Connectaball, barb type press mount

Recommended mounting hole  $.051 (1,30) \pm .002 (0,05)$



### How to order code

**460-8450-01-YY-00**

Basic Part No YY = plating finish

MATERIALS					
Component	Material	Finish			
		-01	-03	-93	-04
Terminal	Brass	Silver	Gold over Nickel		Tin
			50 $\mu$ " (1,25 $\mu$ M) Au	10 $\mu$ " (0,25 $\mu$ M) Au	

TOOLING	
Anvil	435-8053-01-00-00
Punch	435-8054-01-00-00

Minimum board thickness  $.055 (1,40)$