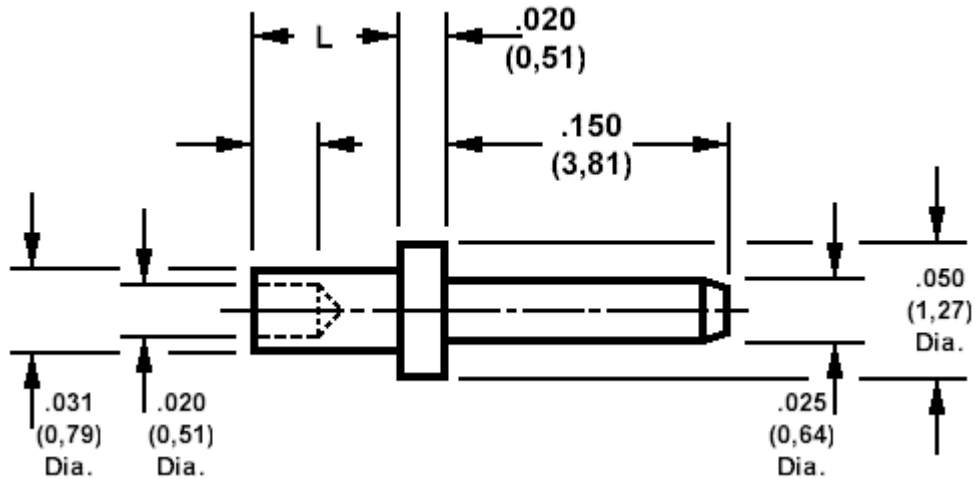


460-2620 Swage mount, .025 (0,64) diameter pins

Recommended mounting hole .035 (0,89) ± .002 (0,05), #65 drill



How to order code

460-2620-XX-YY-00

Basic Part No XX= L dimension, YY = Plating Finish

DIMENSIONS (XX)

Basic Part Number	(XX)	L	For Board Thickness
460-2620	-01	.051 (1,30)	.031 (0,79)
	-02	.081 (2,08)	.061 (1,57)

MATERIALS

Component	Material	Finish (-03)	Finish (-04)
Pin	Brass	Gold over Nickel	Electro-tin over copper

SWAGE TOOLING

Recommended Swaging Tools:-	
Anvil	435-6474-01-00-00
Flare Punch	435-6691-01-00-00