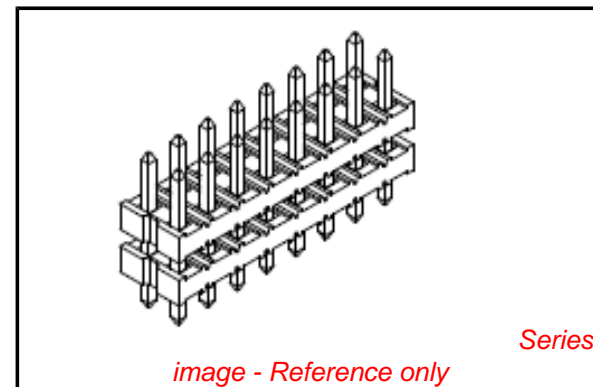


PLEASE CHECK WWW.MOLEX.COM FOR LATEST PART INFORMATION

Part Number: [0877615001](#)
Status: **Active**
Overview: milligrid
Description: 2.00mm (.079") Pitch Milli-Grid™ Header, Dual Row Dual Body, Through Hole, Vertical, 50 Circuits, 0.75µm (30µ") Gold (Au) Selective Plating, 10.30mm (.406") Stacking Height, Tray Packaging, Lead-free

Documents:

[Drawing \(PDF\)](#) [RoHS Certificate of Compliance \(PDF\)](#)
[Product Specification PS-87761-100 \(PDF\)](#)



General

Product Family	PCB Headers
Series	87761
Application	Board-to-Board
Overview	milligrid
Product Name	Dual Body, Milli-Grid™

Physical

Breakaway	Yes
Circuits (Loaded)	50
Circuits (maximum)	50
Color - Resin	Black
First Mate / Last Break	No
Glow-Wire Compliant	No
Guide to Mating Part	No
Keying to Mating Part	None
Lock to Mating Part	None
Mated Height (in)	0.098 In
Mated Height (mm)	2.50 mm
Material - Metal	Copper Alloy
Material - Plating Mating	Gold
Material - Plating Termination	Tin
Material - Resin	Nylon
Number of Rows	2
Orientation	Vertical
PCB Locator	No
PCB Retention	None
Packaging Type	Tray
Pitch - Mating Interface (in)	0.079 In
Pitch - Mating Interface (mm)	2.00 mm
Pitch - Term. Interface (in)	0.079 In
Pitch - Term. Interface (mm)	2.00 mm
Plating min: Mating (µin)	30
Plating min: Mating (µm)	0.75
Plating min: Termination (µin)	79
Plating min: Termination (µm)	2.00
Polarized to Mating Part	No
Polarized to PCB	No
Robotic Placement	None
Shrouded	No
Stackable	No
Temperature Range - Operating	-55°C to +105°C
Termination Interface: Style	Through Hole

Electrical

EU RoHS

**ELV and RoHS
Compliant**
**REACH SVHC
Not Reviewed**
**Halogen-Free
Status
Not Reviewed**

China RoHS



**Need more information on product
environmental compliance?**

Email productcompliance@molex.com
 For a multiple part number RoHS Certificate of Compliance, [click here](#)

Please visit the [Contact Us](#) section for any non-product compliance questions.

Search Parts in this Series

[87761Series](#)

Mates With

[79109 Board-to-Board Top/Bottom Entry
SMT Receptacle](#)

Current - Maximum per Contact
Voltage - Maximum

2A
125V

Material Info

Reference - Drawing Numbers

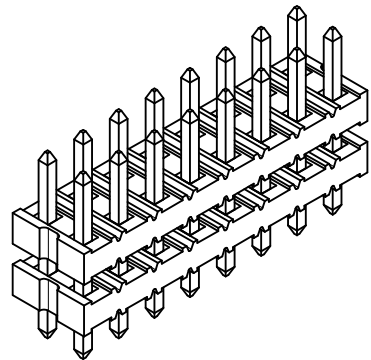
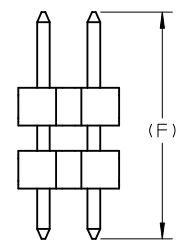
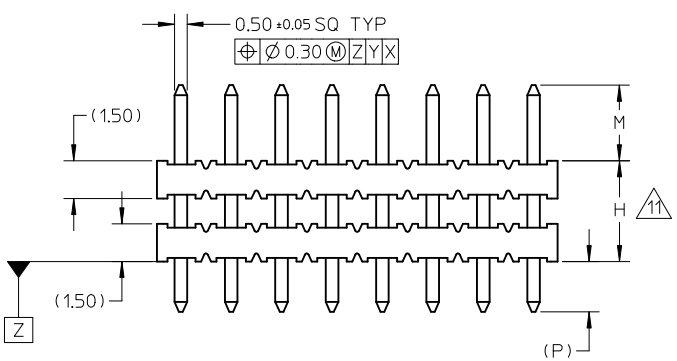
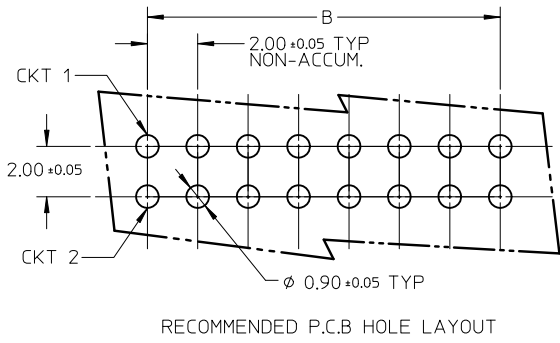
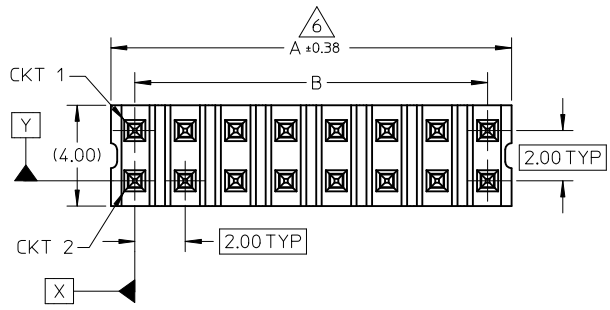
Product Specification
Sales Drawing

PS-87761-100
SD-87761-052

This document was generated on 05/26/2010

PLEASE CHECK WWW.MOLEX.COM FOR LATEST PART INFORMATION

- NOTES:
- MATERIAL:
HSG: NYLON, GLASS-FILLED, UL94V-0 COLOR: BLACK
PIN: 0.50MM SQ, COPPER ALLOY
 - PLATING FINISH:
 - 0.38µm MIN. GOLD OVER
1.25µm MIN. NICKEL OVERALL.
 - GOLD FLASH ON CONTACT AND
2.50µm MIN. TIN ON SOLDER TAIL OVER
1.25µm MIN. NICKEL OVERALL.
 - 0.38µm MIN. GOLD PLATE ON CONTACT AND
2.00µm MIN. TIN ON SOLDER TAIL OVER
1.25µm MIN. NICKEL OVERALL.
 - 0.75µm MIN. GOLD PLATE ON CONTACT AND
2.00µm MIN. TIN ON SOLDER TAIL OVER
1.25µm MIN. NICKEL OVERALL.
 - 2.50µm MIN. TIN OVERALL
1.25µm MIN. NICKEL OVERALL
 - 0.38µm MIN. GOLD PLATE ON CONTACT AND
0.05µm MIN. GOLD ON SOLDER TAIL OVER
1.25µm MIN. NICKEL OVERALL.
 - 0.75µm MIN. GOLD PLATE ON CONTACT AND
0.05µm MIN. GOLD ON SOLDER TAIL OVER
1.25µm MIN. NICKEL OVERALL.
 - 0.75µm MIN. GOLD OVERALL
1.25µm MIN. NICKEL OVERALL.
 - PIN PUSHOUT FORCE: 0.85KgF MIN IN EITHER DIRECTION.
 - THE ABOVE 16CKTS SHOWN IS FOR ILLUSTRATION ONLY.
 - FOR PACKING OPTION PLEASE REFER TO THE TABLE.
 - IRREGULAR CIRCUIT CUTOFF WITHIN BREAKAWAY SECTION IS PERMISSIBLE. CUTTING OR CHIPPING OF THE MAIN BODY IS NOT ACCEPTABLE
 - PRODUCT SPEC PS-87761-001 APPLIES.
 - RECOMMENDED PCB THICKNESS 1.60MM.
 - WAFER TO BE FLAT WITHIN 0.003 mm/mm
 - PACKAGING SPECIFICATION:
TRAY: PK-89990-487
BULK: PK-89990-490
TUBE: PK-89990-475
 - WHEN WAFER ARE STACK TOGETHER, DIMENSION 'H' SHOULD BE TAKEN AS REFERENCE.



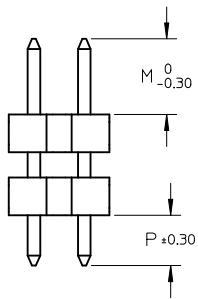
0087-DW-FUJITSU EC NO: S2010-0896 DRWN:SKANG 2010/04/23 CHKD:ATSEE 2010/05/24 APPR:MLONG 2010/05/29	QUALITY SYMBOLS ▽=0 ◻=0	GENERAL TOLERANCES (UNLESS SPECIFIED)		DIMENSION STYLE MM ONLY		SCALE NTS	DESIGN UNITS METRIC	THIRD ANGLE PROJECTION		
			mm	INCH	DRAWN BY	DATE	TITLE			
		4 PLACES	± ---	± ---	KCHO	2005/02/23	2MM DUAL ROW DUAL WAFER HEADER, VERTICAL T/H			
		3 PLACES	± ---	± ---	CHECKED BY	DATE				
	± 0.20	± ---	PTL IM	2005/04/26						
2 PLACES	± ---	± ---	APPROVED BY	DATE						
1 PLACE	± ---	± ---	MLONG	2009/12/02						
		ANGULAR ± 3 °		MATERIAL NO.		DOCUMENT NO.				
DRAFT WHERE APPLICABLE MUST REMAIN WITHIN DIMENSIONS		SEE TABLE		THIS DRAWING CONTAINS INFORMATION THAT IS PROPRIETARY TO MOLEX INCORPORATED AND SHOULD NOT BE USED WITHOUT WRITTEN PERMISSION		MOLEX MOLEX INCORPORATED		SD-87761-052		
C10		REV		SIZE A3				SHEET NO. 1 OF 3		

10 9 8 7 6 5 4 3 2 1

CKT SIZE	DIMENSION	
	A	B
04	4.00	2.00
06	6.00	4.00
08	8.00	6.00
10	10.00	8.00
12	12.00	10.00
14	14.00	12.00
16	16.00	14.00
18	18.00	16.00
20	20.00	18.00
22	22.00	20.00
24	24.00	22.00
26	26.00	24.00
28	28.00	26.00
30	30.00	28.00
32	32.00	30.00
34	34.00	32.00
36	36.00	34.00
38	38.00	36.00
40	40.00	38.00
42	42.00	40.00
44	44.00	42.00
46	46.00	44.00
48	48.00	46.00
50	50.00	48.00

PART NUMBERS	CKT SIZE	VOID POSITION	KINK POSITION	DIMENSION				PLATING OPTION	PACKAGING TYPE	
				MATING END	STACKER HEIGHT	SOLDER TAIL	(F)			
				M	H	(P)				
87761-0401	4	----	----	4.00	15.50	3.50	23.00	3	TRAY	
87761-0600	6	----	----	7.00	5.00	2.80	14.80	5		
87761-0801	8	3,4,5,6	----	4.00	15.50	3.50	23.00	3		
87761-0800	8	----	----	8.70	16.00	3.50	28.20	4		BULK
87761-0802	8	----	----	3.50	21.34	3.50	28.34	8		
87761-1006	10	1	----	1.16	3.05	3.99	8.20	5	TRAY	
87761-1009	10	----	----	1.16	3.05	3.99	8.20	5		
87761-1007	10	----	----	2.60	34.00	2.60	39.20	5		
87761-1000	10	----	----	5.50	27.50	3.43	36.43	4		
87761-1001	10	----	----	2.50	14.50	4.00	21.00	4		
87761-0012	12	----	----	2.60	10.00	3.70	16.30	5		
87761-1200	12	----	----	4.00	24.00	2.79	30.79	4		
87761-0016	16	----	----	4.00	11.15	3.85	17.00	3		
87761-0017	16	----	----	3.00	3.00	2.70	8.70	5		
87761-1600	16	----	----	7.00	5.00	2.80	14.80	5		
87761-0020	20	----	----	6.00	4.00	2.90	12.90	5		
87761-0031	20	----	----	3.00	4.00	2.03	9.00	6		
87761-2000	20	----	----	4.00	24.00	2.79	30.79	4		
87761-2001	20	----	----	2.50	14.50	4.00	21.00	4		
87761-2018	20	----	----	4.50	10.16	4.45	19.10	3		
87761-2400	24	----	----	5.50	27.50	2.80	35.80	4		
87761-2401	24	----	----	2.00	60.00	2.00	64.00	7		
87761-2402	24	----	----	2.00	42.00	2.00	46.00	7		
87761-2610	26	----	----	5.30	6.30	2.70	14.30	4		
87761-3000	30	----	----	4.00	17.30	4.00	25.30	1		
87761-0024	40	----	----	8.89	15.88	3.43	28.20	4		
87761-4000	40	----	----	2.60	3.00	2.60	8.20	5		
87761-4218	42	----	----	4.50	10.16	4.45	19.10	3		
87761-4400	44	----	----	7.00	5.00	4.00	16.00	5		
87761-0026	50	----	----	8.89	15.88	3.43	28.20	4		
87761-5000	50	----	----	3.50	10.00	3.50	17.00	5		

NOTES:
 12. APPLY ONLY FOR PART#87761-5021 & 87761-5022



0087-DW-FUJITSU EC NO: S2010-0896 DRWN:SKANG 2010/04/23 CHYKD:ATSEE 2010/05/24 APPR:MLONG 2010/05/29	QUALITY SYMBOLS ▽=0 ◻=0	GENERAL TOLERANCES (UNLESS SPECIFIED) <table border="1"> <tr><th colspan="2">mm</th><th>INCH</th></tr> <tr><td>4 PLACES</td><td>± ---</td><td>± ---</td></tr> <tr><td>3 PLACES</td><td>± ---</td><td>± ---</td></tr> <tr><td>2 PLACES</td><td>± 0.20</td><td>± ---</td></tr> <tr><td>1 PLACE</td><td>± ---</td><td>± ---</td></tr> </table>	mm		INCH	4 PLACES	± ---	± ---	3 PLACES	± ---	± ---	2 PLACES	± 0.20	± ---	1 PLACE	± ---	± ---	DIMENSION STYLE MM ONLY DRAWN BY: KCHO DATE: 2005/02/23 CHECKED BY: PTL IM DATE: 2005/04/26 APPROVED BY: MLONG DATE: 2009/12/02	SCALE: NTS DESIGN UNITS: METRIC THIRD ANGLE PROJECTION	TITLE: 2MM DUAL ROW DUAL WAFER HEADER, VERTICAL T/H MOLEX INCORPORATED DOCUMENT NO. SD-87761-052
	mm		INCH																	
	4 PLACES	± ---	± ---																	
	3 PLACES	± ---	± ---																	
2 PLACES	± 0.20	± ---																		
1 PLACE	± ---	± ---																		
DRAFT WHERE APPLICABLE MUST REMAIN WITHIN DIMENSIONS	SIZE: A3 THIS DRAWING CONTAINS INFORMATION THAT IS PROPRIETARY TO MOLEX INCORPORATED AND SHOULD NOT BE USED WITHOUT WRITTEN PERMISSION	MATERIAL NO.	SHEET NO. 2 OF 3																	
C10	REV																			

9 8 7 6 5 4 3 2 1

PART NUMBERS	CKT SIZE	VOID POSITION	KINK POSITION	DIMENSION				PLATING OPTION	PACKAGING TYPE
				MATING END	STACKER HEIGHT	SOLDER TAIL	(F)		
				M	H	(P)			
87761-5001	50	----	----	2.50	10.30	4.00	16.80	4	TRAY
△ 87761-5021	50	----	----	4.00	8.70	2.50	15.20	3	
△ 87761-5022	50	----	----	4.00	5.71	2.50	12.21	3	

0087-DW-FUJITSU EC NO: S2010-0896 DRWN:SKANG 2010/04/23 CHKD:ATSEE 2010/05/24 APPR:MLONG 2010/05/29	DESCRIPTION REV	QUALITY SYMBOLS =0 =0	GENERAL TOLERANCES (UNLESS SPECIFIED) <table border="1"> <thead> <tr> <th></th> <th>mm</th> <th>INCH</th> </tr> </thead> <tbody> <tr> <td>4 PLACES</td> <td>± ---</td> <td>± ---</td> </tr> <tr> <td>3 PLACES</td> <td>± ---</td> <td>± ---</td> </tr> <tr> <td>2 PLACES</td> <td>± 0.20</td> <td>± ---</td> </tr> <tr> <td>1 PLACE</td> <td>± ---</td> <td>± ---</td> </tr> </tbody> </table>		mm	INCH	4 PLACES	± ---	± ---	3 PLACES	± ---	± ---	2 PLACES	± 0.20	± ---	1 PLACE	± ---	± ---	DIMENSION STYLE MM ONLY	SCALE NTS	DESIGN UNITS METRIC	THIRD ANGLE PROJECTION
			mm	INCH																		
		4 PLACES	± ---	± ---																		
		3 PLACES	± ---	± ---																		
2 PLACES	± 0.20	± ---																				
1 PLACE	± ---	± ---																				
		DRAFT WHERE APPLICABLE MUST REMAIN WITHIN DIMENSIONS	<table border="1"> <thead> <tr> <th>DRAWN BY</th> <th>DATE</th> <th>TITLE</th> </tr> </thead> <tbody> <tr> <td>KCHO</td> <td>2005/02/23</td> <td rowspan="3">2MM DUAL ROW DUAL WAFER HEADER, VERTICAL T/H</td> </tr> <tr> <td>CHECKED BY</td> <td>DATE</td> </tr> <tr> <td>PTL IM</td> <td>2005/04/26</td> </tr> </tbody> </table>	DRAWN BY	DATE	TITLE	KCHO	2005/02/23	2MM DUAL ROW DUAL WAFER HEADER, VERTICAL T/H	CHECKED BY	DATE	PTL IM	2005/04/26	MOLEX INCORPORATED								
DRAWN BY	DATE	TITLE																				
KCHO	2005/02/23	2MM DUAL ROW DUAL WAFER HEADER, VERTICAL T/H																				
CHECKED BY	DATE																					
PTL IM	2005/04/26																					
		<table border="1"> <thead> <tr> <th>APPROVED BY</th> <th>DATE</th> </tr> </thead> <tbody> <tr> <td>MLONG</td> <td>2009/12/02</td> </tr> </tbody> </table>	APPROVED BY	DATE	MLONG	2009/12/02	MATERIAL NO. SEE TABLE	DOCUMENT NO. SD-87761-052	SHEET NO. 3 OF 3													
APPROVED BY	DATE																					
MLONG	2009/12/02																					
		SIZE A3	THIS DRAWING CONTAINS INFORMATION THAT IS PROPRIETARY TO MOLEX INCORPORATED AND SHOULD NOT BE USED WITHOUT WRITTEN PERMISSION																			