

PLEASE CHECK WWW.MOLEX.COM FOR LATEST PART INFORMATION

Part Number: [0563823000](#)
Status: **Active**
Description: CRC™ Shielded Rectangular I/O Cable Clamp

Documents:

[3D Model](#) [Product Specification PS-51238-010 \(PDF\)](#)
[Drawing \(PDF\)](#) [RoHS Certificate of Compliance \(PDF\)](#)

General

Product Family	I/O Connectors
Series	56382
Application	N/A
Component Type	Cable Clamp
Product Name	CRC™
Type	N/A

Physical

Circuits (Loaded)	N/A
Lock to Mating Part	Yes
Material - Plating Mating	n/a
Orientation	Vertical
Packaging Type	Bag
Panel Mount	N/A
Pitch - Mating Interface (in)	0.000 In
Pitch - Mating Interface (mm)	0.00 mm
Polarized to Mating Part	N/A
Temperature Range - Operating	-40°C to +105°C
Termination Interface: Style	N/A

Electrical

Current - Maximum per Contact	N/A
-------------------------------	-----

Material Info

Reference - Drawing Numbers

Product Specification	PS-51238-010
Sales Drawing	SD-56382-006



EU RoHS
ELV and RoHS
Compliant
REACH SVHC
 Not Reviewed
Halogen-Free
Status
 Not Reviewed

China RoHS



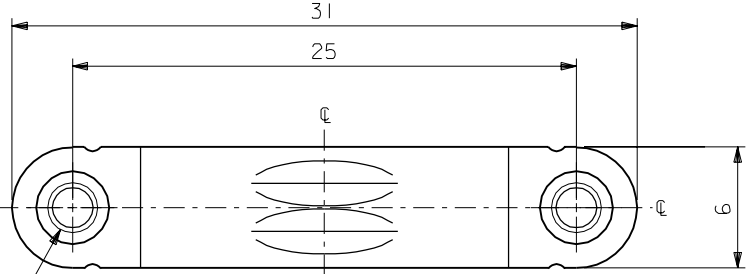
Need more information on product environmental compliance?

Email productcompliance@molex.com
 For a multiple part number RoHS Certificate of Compliance, [click here](#)

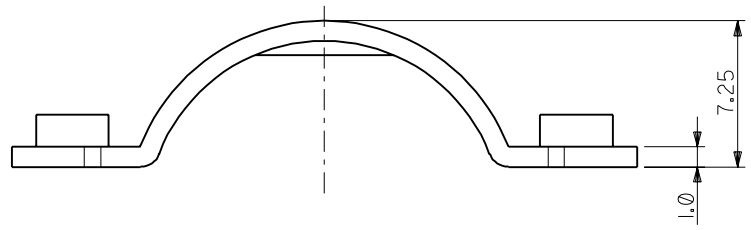
Please visit the [Contact Us](#) section for any non-product compliance questions.

Search Parts in this Series
[56382Series](#)

Use With
[56381](#) and [56385](#) shell cover, [58203](#) cross recessed head screw

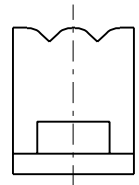


M2.5X0.45
メートル並目ネジ
METRIC COARSE
SCREW THREADS



注記
NOTES

1. 材質
MATERIAL
ステンレス鋼
STAINLESS STEEL
2. 適合シェルカバー : 56381-3000
APPLICABLE SHELL COVER : 56381-3000
3. 適合ネジ : 十字穴付きなべ小ネジ
APPLICABLE SCREW : CROSS RECESSED PAN HEAD MACHINE SCREW
ネジサイズ : M2.5X10
SCREW SIZE : M2.5X10



56382-3000	56382-****
------------	------------

MATERIAL.NO	MODEL.NO
-------------	----------

DIMENSIONS:		SHT	REV
<input type="checkbox"/> mm	<input type="checkbox"/> INCH	<input checked="" type="checkbox"/> mm	REVISION
<input type="checkbox"/> INCH	<input type="checkbox"/> mm	<input type="checkbox"/> ONLY	ON CAD ONLY

TITLE: COMPACT ROBOT CONN. (CRC)
CABLE CLAMP

MOLEX INCORPORATED

MATERIAL NO.	DRAWING NO.	SHEET NO.
SEE CHART	SD-56382-006	1 OF 1

THIS DRAWING CONTAINS INFORMATION THAT IS PROPRIETARY TO MOLEX INCORPORATED AND SHOULD NOT BE USED WITHOUT WRITTEN PERMISSION. SIZE B

DO NOT SCALE DRAWING

EC NO.	REVISED 01/10/19
DRWN: CH'K: APPR:	EC NO. J2002-0944
	DRWN: K.SAKAMOTO
	CH'K: J.MIYAZAWA
	APPR: Y.O.ITO
EC NO.	RELEASED 01/02/16
DRWN: CH'K: APPR:	EC NO. JD2001-1040
	DRWN: S.AKIYAMA
	CH'K: J.MIYAZAWA
	APPR: H.IKESUGI
REV	DESCRIPTION
0	注記参照 SEE NOTES

MATERIAL	材料	注記参照 SEE NOTES
FINISH	仕上げ	#
WIRE RANGE	適用電線範囲	#
INS. RANGE	被覆外径	#

GENERAL TOLERANCES: (UNLESS SPECIFIED) 一般公差	SCALE 4-1	DESIGN UNITS <input checked="" type="checkbox"/> mm <input type="checkbox"/> INCH	THIRD ANGLE PROJECTION <input checked="" type="checkbox"/> <input type="checkbox"/>
10 UNDER 未満	±0.2	DRAWN BY & DATE S. Akiyama 01/01/25	TITLE:
10 OVER 30 UNDER 未満	±0.25	CHECKED BY & DATE J. Miyazawa / Y. Ito	COMPACT ROBOT CONN. (CRC) CABLE CLAMP
30 OVER 以上	±0.3	APPROVED BY & DATE H. Ikessugi	MOLEX INCORPORATED
ANGLE 角度	±3°	CAD FILENAME 56382006.S01	MATERIAL NO. SEE CHART