

Low Phase Noise PECL VCXO (100MHz to 200MHz)

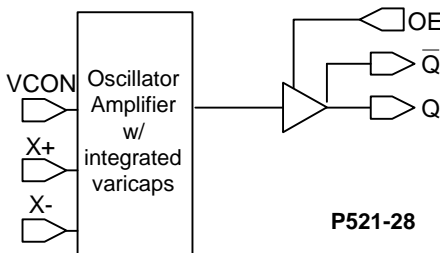
FEATURES

- 100MHz to 200MHz Fundamental Mode Crystal.
- Output range: 100MHz – 200MHz.
- Complementary PECL outputs.
- Selectable OE Logic (enable high or enable low).
- Integrated variable capacitors.
- High pull linearity: < 5%.
- +/- 125 ppm pull range
- Supports 2.5V or 3.3V-Power Supply.
- Available in die form.
- Thickness 10 mil.

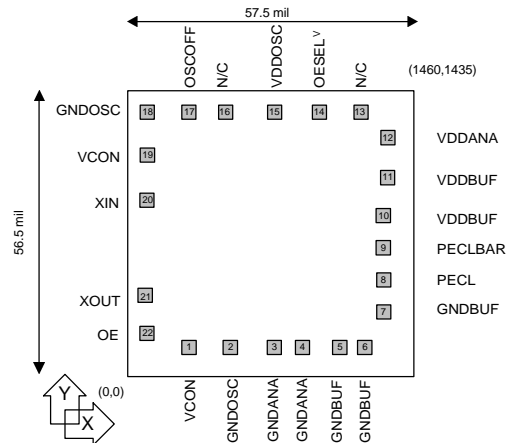
DESCRIPTIONS

P521-28 is a VCXO IC specifically designed to pull high frequency fundamental crystals. Its internal varicaps allow an on chip frequency pulling, controlled by the VCON input. The chip provides a low phase noise, low jitter PECL differential clock output.

BLOCK DIAGRAM



DIE CONFIGURATION



DIE SPECIFICATIONS

Name	Value
Size	56.5 x 57.5 mil
Reverse side	GND
Pad dimensions	80 micron x 80 micron
Thickness	10 mil

OUTPUT ENABLE LOGIC SELECTION

OESEL (Pad #14)	OECTRL (Pad #22)	State
0 (Default)	0 (Default)	Output enabled
	1	Tri-state
1	0	Tri-state
	1 (Default)	Output enabled

Pad #14, 22: Bond to GND to set to "0", bond to VDD to set to "1"
No connection results to "default" setting through internal pull-up/-down.
Pad #22: Logical states defined by PECL V_{IH} and V_{IL} levels.

Low Phase Noise PECL VCXO (100MHz to 200MHz)

PAD ASSIGNMENT AND DESCRIPTION

Pad #	Name	X (μm)	Y (μm)	Description
1	VCON	329.6	110.1	Control Voltage input. Use this pin to change the output frequency by varying the applied Control Voltage.
2	GNDOSC	498.3	110.0	GND connection for oscillator circuitry.
3	GNDANA	696.2	110.0	GND connection for analog circuitry.
4	GNDANA	825.0	110.0	GND connection for analog circuitry.
5	GNDBUF	973.6	110.0	GND connection for output buffer circuitry.
6	GNDBUF	1150.0	109.1	GND connection for output buffer circuitry.
7	GNDBUF (optional)	1183.6	302.2	GND connection for output buffer circuitry.
8	PECL	1183.6	452.3	PECL output
9	PECLBAR	1183.6	613.5	PECL complementary output.
10	VDDBUF (optional)	1182.4	745.9	VDD connection for output buffer circuitry. VDDBUF should be separately decoupled from other VDDs whenever possible.
11	VDDBUF	1252.4	903.6	VDD connection for output buffer circuitry. VDDBUF should be separately decoupled from other VDDs whenever possible.
12	VDDANA	1252.4	1081.3	VDD connection for analog circuitry. VDDANA should be separately decoupled from other VDDs whenever possible.
13	Not used	1058.5	1221.6	
14	OESEL	864.5	1221.6	Selector input to choose the OE control logic. See table on page 1.
15	VDDOSC	624.0	1222.7	VDD connection for oscillator circuitry. VDDOSC should be separately decoupled from other VDDs whenever possible.
16	Not used	467.1	1222.6	
17	OSCOFF	271.1	1222.6	Oscillator Off Selection input pad. When low, turns off the oscillator when output is disabled. When high (default), oscillator running when output is disabled. Internal pull-up
18	GNDOSC (optional)	109.4	1222.9	GND connection for oscillator circuitry.
19	VCON	108.9	1062.1	Control Voltage input. Use this pin to change the output frequency by varying the applied Control Voltage (internally connected to pad 1).
20	XIN	109.0	865.8	Crystal oscillator input pad.
21	XOUT	108.6	358.4	Crystal oscillator output pad.
22	OCTRL	108.6	146.5	OE input pad. See table on page 1.

Note: for optimal Phase Noise performance, it is recommended to bond all optional VDD and GND pads.

Low Phase Noise PECL VCXO (100MHz to 200MHz)

ELECTRICAL SPECIFICATIONS

1. Absolute Maximum Ratings

PARAMETERS	SYMBOL	MIN.	MAX.	UNITS
Supply Voltage	V_{DD}		7	V
Input Voltage, dc	V_I	$V_{SS}-0.5$	$V_{DD}+0.5$	V
Output Voltage, dc	V_O	$V_{SS}-0.5$	$V_{DD}+0.5$	V
Storage Temperature	T_S	-65	150	°C
Ambient Operating Temperature	T_A	0	70	°C
Junction Temperature	T_J		125	°C
Lead Temperature (soldering, 10s)			260	°C
Input Static Discharge Voltage Protection			2	kV

Exposure of the device under conditions beyond the limits specified by Maximum Ratings for extended periods may cause permanent damage to the device and affect product reliability. These conditions represent a stress rating only, and functional operations of the device at these or any other conditions above the operational limits noted in this specification is not implied.

2. Crystal Specifications

PARAMETERS	SYMBOL	CONDITIONS	MIN.	TYP.	MAX.	UNITS
Crystal Resonator Frequency	F_{XIN}	Parallel Fundamental Mode	100		200	MHz
Crystal Loading Rating	$C_L (xtal)$	Die at $V_{CON} = 1.65V$		7.5		pF
Interelectrode Capacitance	C_0				3.5	pF
Crystal Pullability	$C_0/C_1 (xtal)$	AT cut			250	-
Recommended ESR	R_E	AT cut			30	Ω

3. Voltage Control Crystal Oscillator

PARAMETERS	SYMBOL	CONDITIONS	MIN.	TYP.	MAX.	UNITS
VCXO Stabilization Time *	$T_{VCXOSTB}$	From power valid		10		ms
VCXO Tuning Range		XTAL $C_0/C_1 < 250$	250*			ppm
CLK output pullability		$0V \leq V_{CON} \leq 3.3V$ at room temperature		$\pm 80^*$		ppm
On-chip Varicaps control range		$V_{CON} = 0$ to 3.3V		4 – 18*		pF
Linearity				4*	5*	%
VCXO Tuning Characteristic				65		ppm/V
VCON input impedance			2000			k Ω
VCON modulation BW		$0V \leq V_{CON} \leq 3.3V, -3dB$	25			kHz

Note: Parameters denoted with an asterisk (*) represent nominal characterization data and are not production tested to any specific limits.

Low Phase Noise PECL VCXO (100MHz to 200MHz)

4. General Electrical Specifications

PARAMETERS	SYMBOL	CONDITIONS	MIN.	TYP.	MAX.	UNITS
Supply Current (Loaded Outputs)	I _{DD}	at 3.3V @ 155MHz			55	mA
Output valid after OE enabled		Oscillator off		10		ms
		Oscillator on			1	
Operating Voltage	V _{DD}		2.25		3.63	V
Output Clock Duty Cycle		@ V _{dd} – 1.3V (PECL)	45	50	55	%
Short Circuit Current				±50		mA

5. Jitter specifications

PARAMETERS	CONDITIONS	MIN.	TYP.	MAX.	UNITS
Period jitter RMS at 155MHz	At 155.52MHz, with capacitive decoupling between VDD and GND. Over 10,000 cycles		2.5		ps
Period jitter peak-to-peak at 155MHz			18.5	20	
Accumulated jitter RMS at 155MHz	At 155.52MHz, with capacitive decoupling between VDD and GND. Over 1,000,000 cycles.		2.5		ps
Accumulated jitter peak-to-peak at 155MHz			24	27	
Random Jitter	"RJ" measured on Wavecrest SIA 3000		2.5		ps
Integrated jitter RMS at 155MHz	Integrated 12 kHz to 20 MHz		0.25	0.35	ps

Measured on Wavecrest SIA 3000

6. Phase noise specifications

PARAMETERS	FREQUENCY	10Hz	100Hz	1kHz	10kHz	100kHz	1MHz	UNITS
Phase Noise relative to carrier	155.52MHz	-75	-100	-125	-140	-145	-150	dBc/Hz

Note: Phase Noise measured at VCON = 0V

Low Phase Noise PECL VCXO (100MHz to 200MHz)

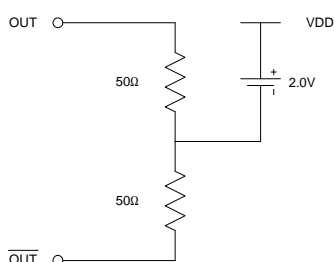
7. PECL Electrical Characteristics

PARAMETERS	SYMBOL	CONDITIONS	MIN.	MAX.	UNITS
Output High Voltage	V_{OH}	$R_L = 50 \Omega$ to $(V_{DD} - 2V)$ (see figure)	$V_{DD} - 1.025$		V
Output Low Voltage	V_{OL}			$V_{DD} - 1.620$	V

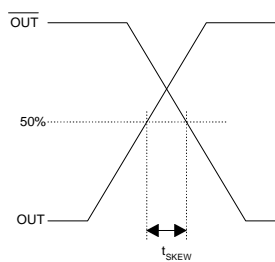
8. PECL Switching Characteristics

PARAMETERS	SYMBOL	CONDITIONS	MIN.	TYP.	MAX.	UNITS
Clock Rise Time	t_r	@20/80% - PECL		0.6	1.5	ns
Clock Fall Time	t_f	@80/20% - PECL		0.5	1.5	ns

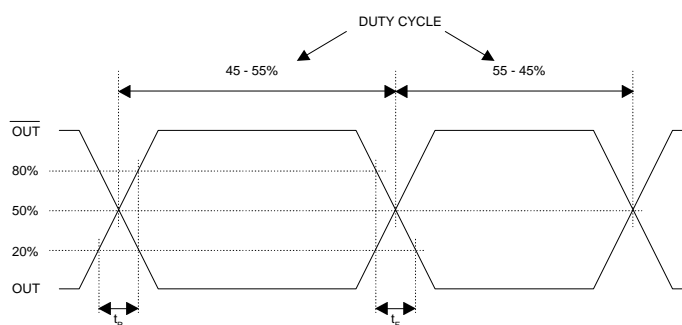
PECL Levels Test Circuit



PECL Output Skew



PECL Transition Time Waveform



Low Phase Noise PECL VCXO (100MHz to 200MHz)

ORDERING INFORMATION

PhaseLink Corporation, reserves the right to make changes in its products or specifications, or both at any time without notice. The information

PART NUMBER

The order number for this device is a combination of the following:
Device number, Package type and Operating temperature range

P521-28

—————

PART NUMBER

D C

—————

TEMPERATURE
C=COMMERCIAL

—————

PACKAGE TYPE
D=DIE

<u>Order Number</u>	<u>Marking</u>	<u>Package Option</u>
P521-28DC	P521-28DC	Die – Waffle Pack

furnished by Phaselink is believed to be accurate and reliable. However, PhaseLink makes no guarantee or warranty concerning the accuracy of said information and shall not be responsible for any loss or damage of whatever nature resulting from the use of, or reliance upon this product.

LIFE SUPPORT POLICY: *PhaseLink's products are not authorized for use as critical components in life support devices or systems without the express written approval of the President of PhaseLink Corporation.*