

N-Channel 20-V (D-S) MOSFET

CHARACTERISTICS

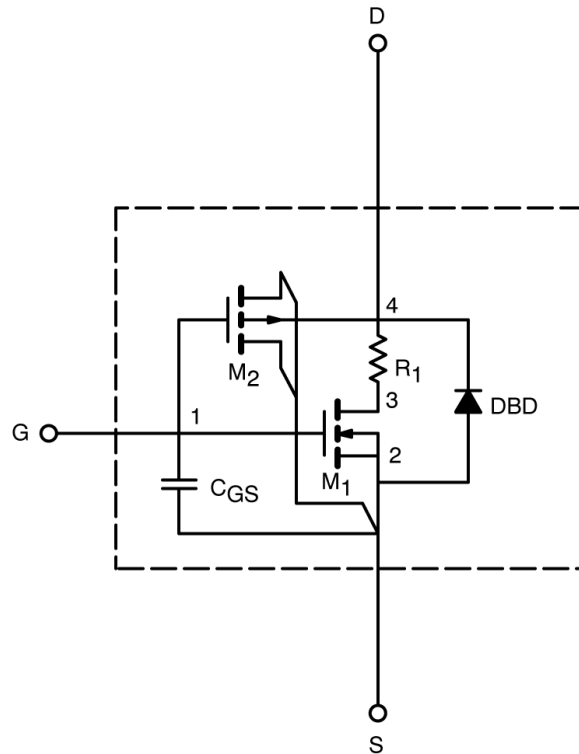
- N-Channel Vertical DMOS
- Macro Model (Subcircuit Model)
- Level 3 MOS
- Apply for both Linear and Switching Application
- Accurate over the -55 to 125°C Temperature Range
- Model the Gate Charge, Transient, and Diode Reverse Recovery Characteristics

DESCRIPTION

The attached spice model describes the typical electrical characteristics of the n-channel vertical DMOS. The subcircuit model is extracted and optimized over the -55 to 125°C temperature ranges under the pulsed 0-to-5V gate drive. The saturated output impedance is best fit at the gate bias near the threshold voltage.

A novel gate-to-drain feedback capacitance network is used to model the gate charge characteristics while avoiding convergence difficulties of the switched C_{gd} model. All model parameter values are optimized to provide a best fit to the measured electrical data and are not intended as an exact physical interpretation of the device.

SUBCIRCUIT MODEL SCHEMATIC



This document is intended as a SPICE modeling guideline and does not constitute a commercial product data sheet. Designers should refer to the appropriate data sheet of the same number for guaranteed specification limits.

SPICE Device Model Si6802DQ

Vishay Siliconix



SPECIFICATIONS (T _J = 25°C UNLESS OTHERWISE NOTED)				
Parameter	Symbol	Test Conditions	Typical	Unit
Static				
Gate Threshold Voltage	V _{GS(th)}	V _{DS} = V _{GS} , I _D = 250 μA	0.95	V
On-State Drain Current ^a	I _{D(on)}	V _{DS} ≥ 5 V, V _{GS} = 4.5 V	46	A
		V _{DS} ≥ 5 V, V _{GS} = 3 V	18	
Drain-Source On-State Resistance ^a	r _{DS(on)}	V _{GS} = 4.5 V, I _D = 3.3 A	0.148	Ω
		V _{GS} = 3.0 V, I _D = 2.7 A	0.061	
Forward Transconductance ^a	g _{fs}	V _{DS} = 10 V, I _D = 3.3 A	9.7	S
Diode Forward Voltage ^a	V _{SD}	I _S = 1.25 A, V _{GS} = 0 V	0.71	V
Dynamic^b				
Total Gate Charge	Q _g	V _{DS} = 6 V, V _{GS} = 4.5 V, I _D = 0.3 A	4.2	nC
Gate-Source Charge	Q _{gs}		1	
Gate-Drain Charge	Q _{gd}		0.7	
Turn-On Delay Time	t _{d(on)}	V _{DD} = 6 V, R _L = 20 Ω I _D = 0.3 A, V _{GEN} = 4.5 V, R _G = 6 Ω	8	ns
Rise Time	t _r		10	
Turn-Off Delay Time	t _{d(off)}		13	
Fall Time	t _f		39	
Source-Drain Reverse Recovery Time	t _{rr}	I _F = 1.25 A, di/dt = 100 A/μs	51	

Notes

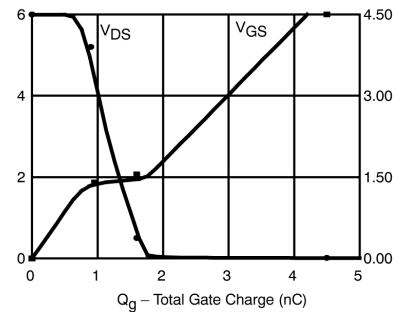
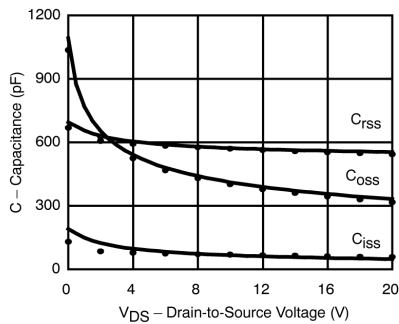
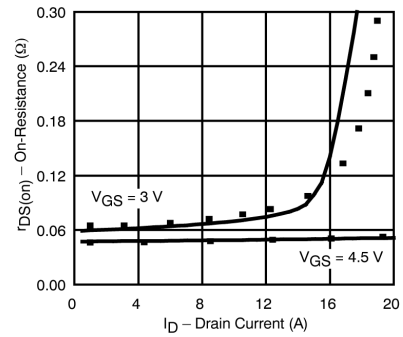
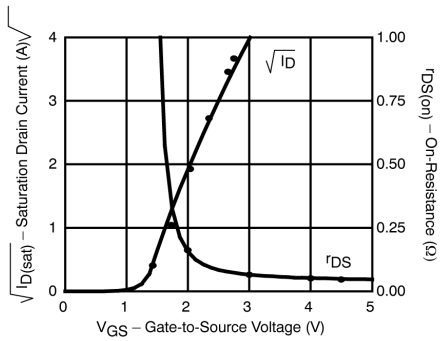
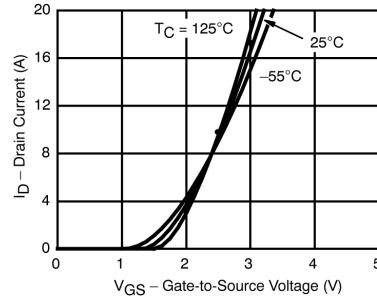
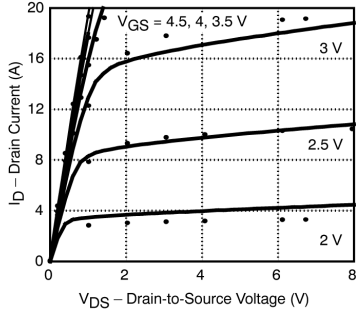
- a. Pulse test; pulse width ≤ 300 μs, duty cycle ≤ 2%.
- b. Guaranteed by design, not subject to production testing.



SPICE Device Model Si6802DQ

Vishay Siliconix

COMPARISON OF MODEL WITH MEASURED DATA ($T_J=25^\circ\text{C}$ UNLESS OTHERWISE NOTED)



Note: Dots and squares represent measured data.