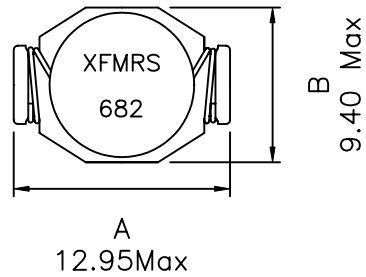
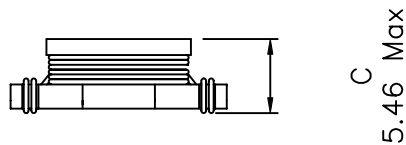


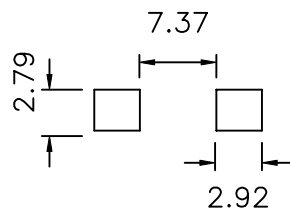
1. Dimensions:



TOP VIEW

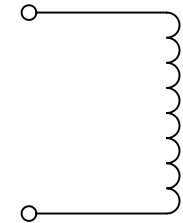


SIDE VIEW



PCB LAYOUT

2. Schematic:



3. Electrical Specs:

INDUCTANCE: $6.8\mu\text{H} \pm 20\%$ @100KHz 0.1V

IDC: 4.6ADC (10% DROP MAX IN INDUCTANCE)

DC RESISTANCE: 0.027 OHMS Maximum

Notes:

1. Solderability: Leads shall meet MIL-STD-202, Method 208D for solderability.
2. Flammability: UL94V-0
3. ASTM oxygen index: > 28%
4. Insulation System: Class F 155°C. UL file E151556
5. Operating Temperature Range: -40°C to +85°C

DOC. REV: A/1

| | | | |
|---|----------------------------|-----------|-----------|
| XFMRS Inc | Title: SMD Inductor | | |
| UNLESS OTHERWISE SPECIFIED TOLERANCES: .xx ± 0.25 Dimensions in MM | P/N: XFS1MDR5137-682 | | REV A |
| | DWN. | Kang Chen | Dec-11-03 |
| | CHK. | YK Liao | Dec-11-03 |
| Scale 2.5:1 SHT 1 OF 1 | APP. | MS | Dec-11-03 |