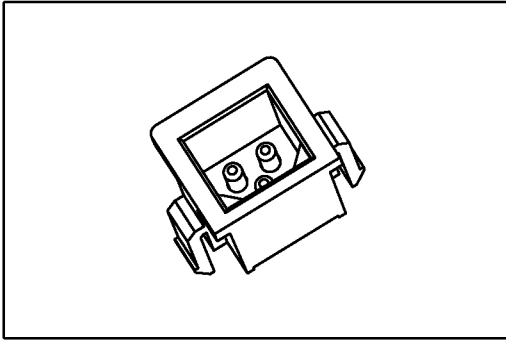


# 8921 Series

## AC Power Jack



### Material:

Housing: 30% Glass filled PBT UL94V-0.

Contacts: Brass.

### Electrical Characteristics:

Current Rating: 2 AMP.

Dielectric Withstanding Voltage: AC 1000V For 1 minute.

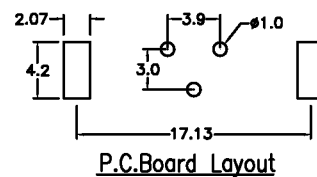
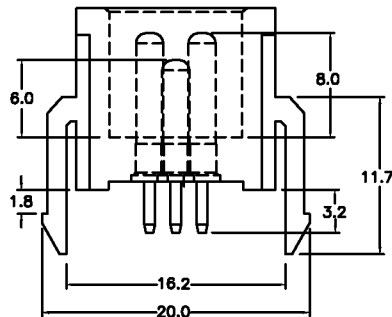
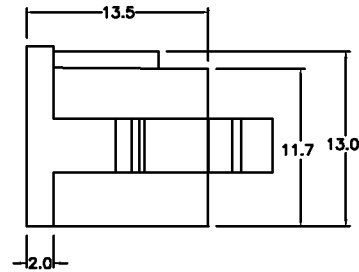
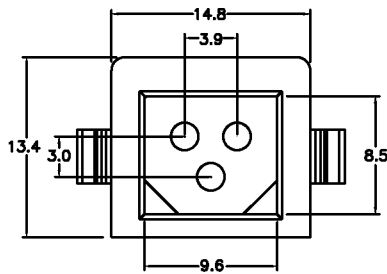
Insulator Resistance: 1000MΩmin. at DC 500V.

Contact Resistance: 30mΩmax. at DC 100mA.

Operating Temperature: -55°C~+105°C.

### Features:

- \* Straight P.C.B. Mount
- \* 3P Power Jack
- \* 2P Premating



## Ordering information

8921- P3 A / OP3 A  
 Series Position Special Pin Type Code A: Tray Package