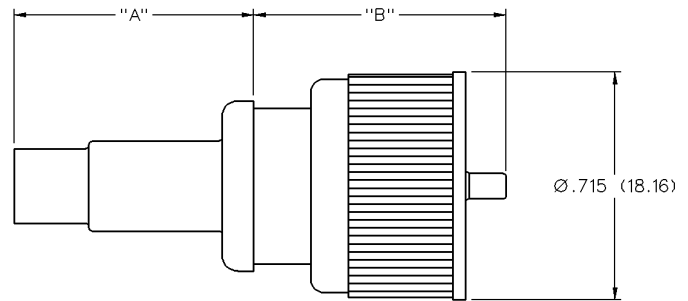


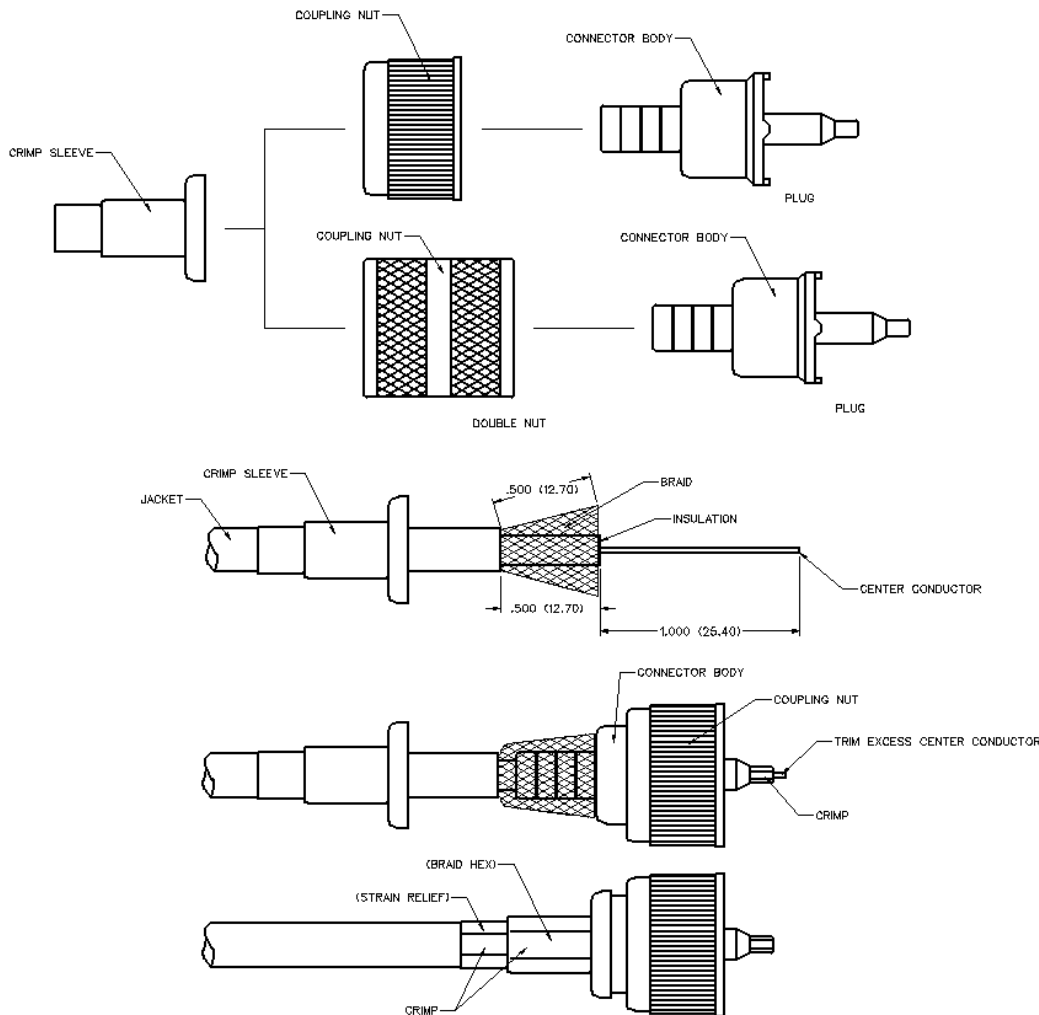


INCHES (MILLIMETERS)  
CUSTOMER DRAWINGS AVAILABLE UPON REQUEST

# UHF Straight Crimp Type Plug - Crimp Contact



PART NUMBER	CABLE TYPE	"A"	"B"	WIRE GAUGE	WIRE DECIMAL	JACKET O.D.
CPL-259-1	RG-58	.754 (19.15)	.810 (20.57)	20	.0325 (0.83)	.185 (4.70)-.205 (5.21)



1. Identify connector parts. (3 piece parts)  
Except CPL-259-10 (1 Piece)
2. Slide crimp sleeve over cable and strip cable to dimensions shown. Do not nick center conductor during strip operations. (CPL-259-10: trim braid and insulation to .300 (7.62).
3. Slide coupling nut onto the connector body. Then slide the connector body over cable so that the center conductor extends through the front of the contact. Crimp the contact as shown. Trim away the center conductor extending past the contact. (CPL-259-10: fold braid onto jacket before sliding connector body onto cable.)
4. Arrange braid uniformly around crimp stem. Slide crimp sleeve over braid and crimp securely using recommended crimp tool.

Part Number	Cable	Wire Gauge	Wire Decimal	Jacket O.D.	Crimp (Braid Hex)	Crimp (Strain Relief)	Contact Crimp Hex	Recommended Crimp Tool
CPL-259-1	RG-58	20	.0325	.185 (4.07)-.205 (5.21)	.255 (6.48)	.213 (5.41)	.065 (1.65)	24-307

# UHF Connectors

Specifications



INCHES (MILLIMETERS)  
CUSTOMER DRAWINGS AVAILABLE UPON REQUEST

The UHF connectors are low cost, general purpose units designed for low frequency system applications. These commercial quality connectors are equipped with threaded coupling interfaces for secure and reliable connections. The Standard UHF and Mini UHF connectors are not intermateable.

## **STANDARD UHF**

### **Electrical Characteristics**

Impedance: Nonconstant  
Frequency range: 0-500 MHz  
Working voltage: 500 volts RMS at sea level  
Dielectric withstanding voltage: 1500 volts RMS at sea level  
Insulation resistance: 5000 megohms minimum

### **Environmental Characteristics**

Recommended temperature range: -55°C to +85°C

### **Mechanical Characteristics**

Durability: 500 cycles  
Cable retention: 20 lbs., RG-58 C/U cable

### **Materials**

Body and coupling nut: Zinc or brass  
Contact: Beryllium copper or brass  
Crimp Sleeve: Brass  
Insulator: Delrin®  
Plating: Body - Nickel  
Crimp sleeve - Nickel  
Contact - Gold or nickel