

**PLEASE CHECK WWW.MOLEX.COM FOR LATEST PART INFORMATION**

**Part Number:** [0879380002](#)

**Status:** **Active**

**Overview:** [kk](#)

**Description:** 2.54mm (.100") Pitch KK® Header, Surface Mount, Single Row Dual Body, Vertical, 8 Circuits, Gold (Au) Selective Plating, 8.07mm (.318") Stacking Height, with Pick-and-Place Cap, Tape and Reel Packaging, Lead-free

**Documents:**

[3D Model](#)

[Drawing \(PDF\)](#)

[Product Specification PS-87920-019 \(PDF\)](#)

[RoHS Certificate of Compliance \(PDF\)](#)

**General**

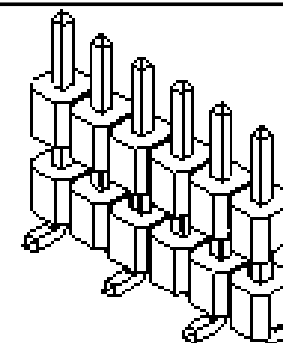
Product Family	PCB Headers
Series	<a href="#">87938</a>
Application	Board-to-Board, Wire-to-Board
Overview	<a href="#">kk</a>
Product Name	Dual Body, KK®

**Physical**

Breakaway	Yes
Circuits (Loaded)	8
Circuits (maximum)	8
Color - Resin	Black
First Mate / Last Break	No
Glow-Wire Compliant	No
Guide to Mating Part	No
Keying to Mating Part	None
Lock to Mating Part	None
Material - Metal	Copper Alloy
Material - Plating Mating	Gold
Material - Plating Termination	Tin
Material - Resin	Nylon
Number of Rows	1
Orientation	Vertical
PCB Locator	No
PCB Retention	None
Packaging Type	Embossed Tape on Reel
Pitch - Mating Interface (in)	0.100 In
Pitch - Mating Interface (mm)	2.54 mm
Pitch - Term. Interface (in)	0.100 In
Pitch - Term. Interface (mm)	2.54 mm
Plating min: Mating (µin)	1
Plating min: Mating (µm)	0.025
Plating min: Termination (µin)	75
Plating min: Termination (µm)	1.90
Polarized to Mating Part	No
Polarized to PCB	No
Robotic Placement	Pick and Place Cap
Shrouded	No
Stackable	No
Surface Mount Compatible (SMC)	Yes
Temperature Range - Operating	-55°C to +105°C
Termination Interface: Style	Surface Mount

**Electrical**

Current - Maximum per Contact	3A
-------------------------------	----



*Series  
image - Reference only*

**EU RoHS**

**ELV and RoHS  
Compliant**  
**REACH SVHC  
Not Reviewed**  
**Halogen-Free  
Status**

**China RoHS**



**Need more information on product  
environmental compliance?**

Email [productcompliance@molex.com](mailto:productcompliance@molex.com)  
For a multiple part number RoHS Certificate of  
Compliance, [click here](#)

Please visit the [Contact Us](#) section for any  
non-product compliance questions.

**Search Parts in this Series**

[87938Series](#)

**Mates With**

KK® PCB Receptacles [4455](#). SL™ IDT  
Housings [70430](#) , [7720](#), [70400](#). C-Grid®  
PCB Receptacles [90147](#), [90148](#)

Voltage - Maximum

250V

**Material Info**

**Reference - Drawing Numbers**

Packaging Specification

PK-89990-486

Product Specification

PS-87920-019

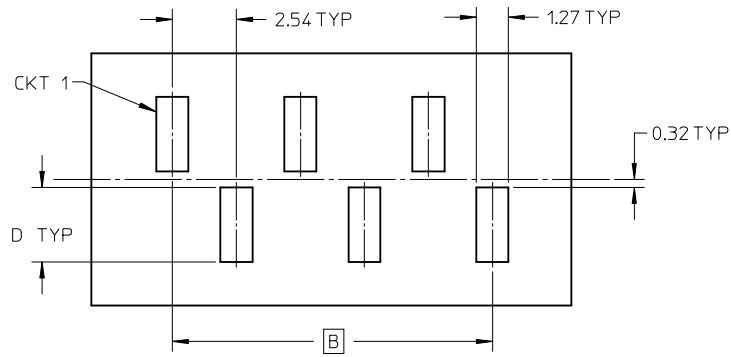
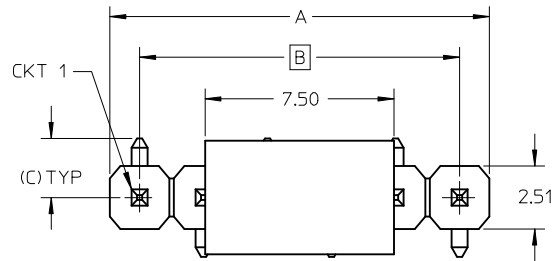
Sales Drawing

SD-87938-001

This document was generated on 05/26/2010

**PLEASE CHECK [WWW.MOLEX.COM](http://WWW.MOLEX.COM) FOR LATEST PART INFORMATION**

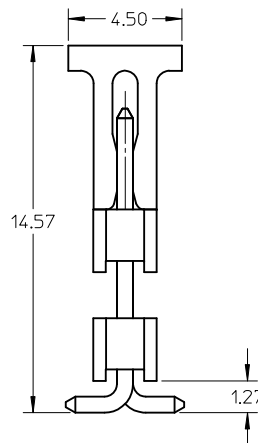
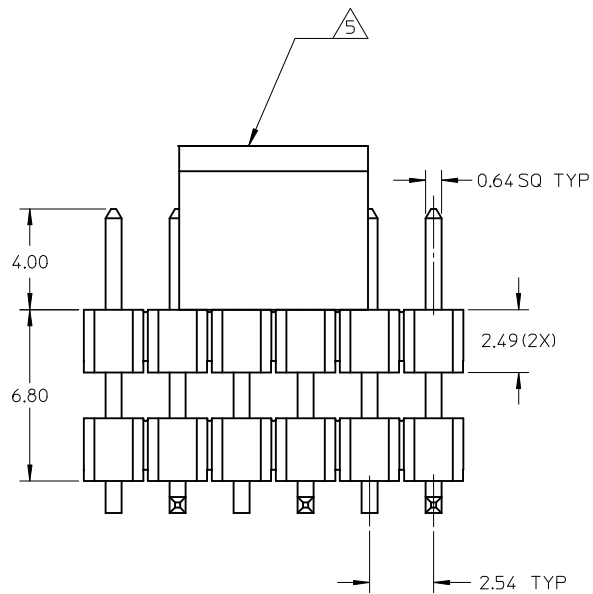
PART NUMBER	CKT SIZE	VOID POSITION	DIMENSION				PACKAGING TYPE
			A	B	C	D	
87938-0002	8	-----	20.32	17.78	1.76	2.96	WITH CAP IN TAPE & REEL
87938-0800	8	-----	20.32	17.78	2.35	3.55	WITH CAP IN TAPE & REEL



RECOMMENDED P.C.B. LAYOUT

NOTE:

1. WAFER TO BE FLAT WITHIN 0.076mm/mm OR 0.003in/in.
2. MATERIAL: HSG: NYLON 6T, 30% GLASS FILLED, UL-94V-0,COLOR BLACK.  
PIN: COPPER ALLOY
3. PLATING FINISH: 14NCES MIN GOLD PLATE IN SELECTED AREA  
754NCES MIN TIN ON SOLDER TAIL OVER  
504NCES MIN NICKEL UNDERPLATE OVERALL.
4. PIN PUSHOUT FORCE: 1KG MIN. IN EITHER DIRECTION.
5. CAP TO BE LOCATED AS CENTRAL OF PART AS POSSIBLE.
6. PART TO BE CAPPED WITH PICK & PLACE PAD.
7. HEADER MAY BE BROKEN TO DESIRE CKT SIZE, SLIGHTLY FLASHES SHOULD BE ACCEPTED.
8. THE ABOVE 6 CKT SHOWN IS FOR ILLUSTRATION ONLY
9. PARTS TO BE PACKED IN T&R.



REVISE CKT ORIENTATION EC NO: S2010-0003 DRWN:SKANG 2009/07/20 CHKD:ATSEE 2009/07/20 APPR:MLONG 2009/07/21	QUALITY SYMBOLS ▽=0 ◻=0	GENERAL TOLERANCES (UNLESS SPECIFIED)		DIMENSION STYLE <b>MM ONLY</b>	SCALE NTS	DESIGN UNITS METRIC	THIRD ANGLE PROJECTION		
		4 PLACES ± --- ± ---	mm INCH	DRAWN BY YLQ1A0	DATE 2004/10/06	TITLE SALES DRAWING SINGLE ROW DUAL WAFER 2.54MM PITCH, SMT			
		3 PLACES ± --- ± ---	± 0.20 ± ---	CHECKED BY PTLIM	DATE 2004/10/08	MOLEX INCORPORATED			
		2 PLACES ± --- ± ---	± --- ± ---	APPROVED BY SCLOW	DATE 2004/10/10	MATERIAL NO. SEE TABLE	DOCUMENT NO. SD-87938-001	SHEET NO. 1 OF 2	
1 PLACE ± --- ± ---	ANGULAR ± 3 °	DRAFT WHERE APPLICABLE MUST REMAIN WITHIN DIMENSIONS		THIS DRAWING CONTAINS INFORMATION THAT IS PROPRIETARY TO MOLEX INCORPORATED AND SHOULD NOT BE USED WITHOUT WRITTEN PERMISSION					

10 9 8 7 6 5 4 3 2 1

F

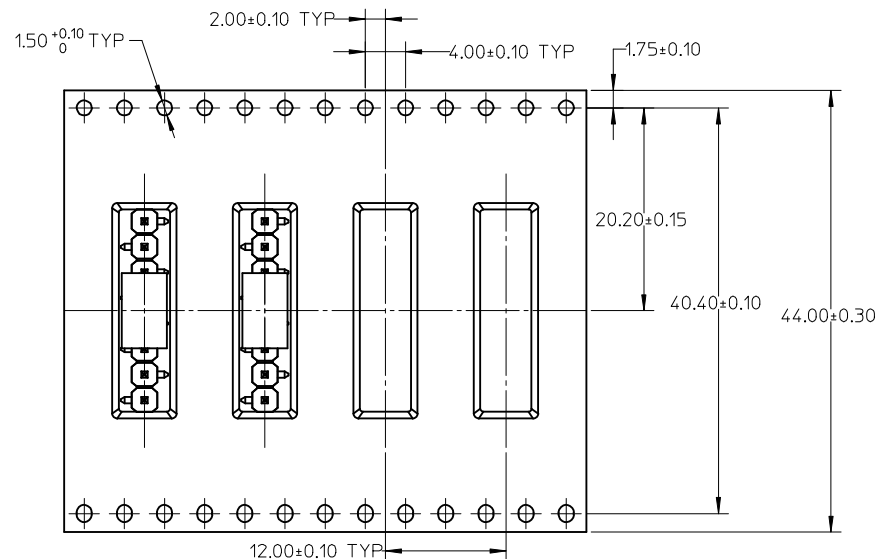
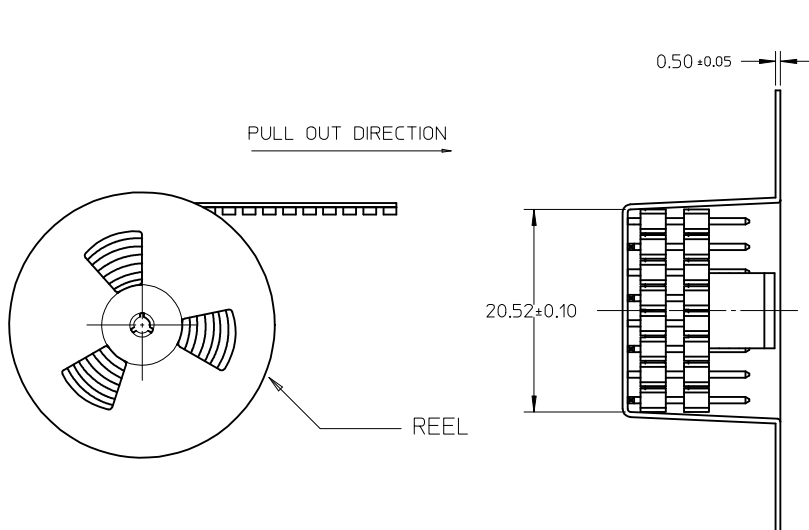
E

D

C

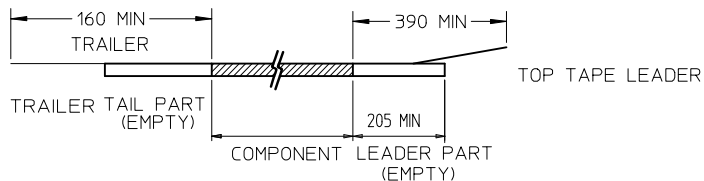
B

A



NOTES:

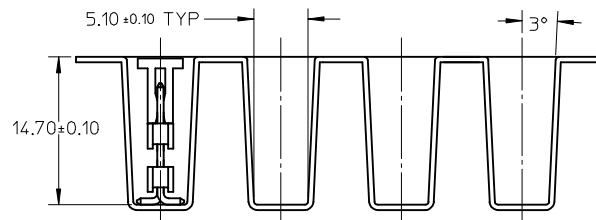
1. LEADER AND TRAILER TAPE



2. PEELING OFF FORCE OF THE TOP TAPE: 60gf MAX.  
(PEELING DIRECTION AS SHOWN IN FOLLOWING FIGURE)



3. THE TAPE IS TREATED FOR ANTI ESD



REVISE CKT ORIENTATION EC NO: S2010-0003 DRWN:SKANG 2009/07/20 CHKD:ATSEE 2009/07/20 APPR:MLONG 2009/07/21	DESCRIPTION A2	QUALITY SYMBOLS ▽=0 ▽=0	GENERAL TOLERANCES (UNLESS SPECIFIED)		DIMENSION STYLE MM ONLY		SCALE NTS	DESIGN UNITS METRIC	THIRD ANGLE PROJECTION		
				mm	INCH	DRAWN BY YLQ1A0	DATE 2004/10/06	TITLE SALES DRAWING SINGLE ROW DUAL WAFER 2.54MM PITCH, SMT			
			4 PLACES	± ---	± ---	CHECKED BY PTL IM	DATE 2004/10/08	MOLEX INCORPORATED SD-87938-001			
			3 PLACES	± ---	± ---	APPROVED BY SCLOW	DATE 2004/10/10				
2 PLACES	± 0.20	± ---	MATERIAL NO. SEE TABLE		DOCUMENT NO. SD-87938-001		SHEET NO. 2 OF 2				
1 PLACE	± ---	± ---	DRAFT WHERE APPLICABLE MUST REMAIN WITHIN DIMENSIONS								
			ANGULAR ± 3 °								
			THIS DRAWING CONTAINS INFORMATION THAT IS PROPRIETARY TO MOLEX INCORPORATED AND SHOULD NOT BE USED WITHOUT WRITTEN PERMISSION								

9 8 7 6 5 4 3 2 1