

# Monolithic crystal filter

## MQF45.0-3000/02



### Application

- 4 pol filter
- i.f.- filter
- use in mobile and stationary transceivers

### Limiting values

		Unit	Value
Center frequency	$f_0$	MHz	45.0
Insertion loss		dB	$\leq 3.0$
Pass band at 3.0 dB		kHz	$\pm 15.00$
Ripple in pass band	$f_0 \pm 10.00$ kHz	dB	$\leq 1.0$
Stop band attenuation	$f_0 \pm 50$ kHz	dB	$\geq 40$
Alternate attenuation	$f_0 \pm 910$ kHz	dB	$> 80$
Spurious responses		dB	$> 30$

### Terminating impedance Z

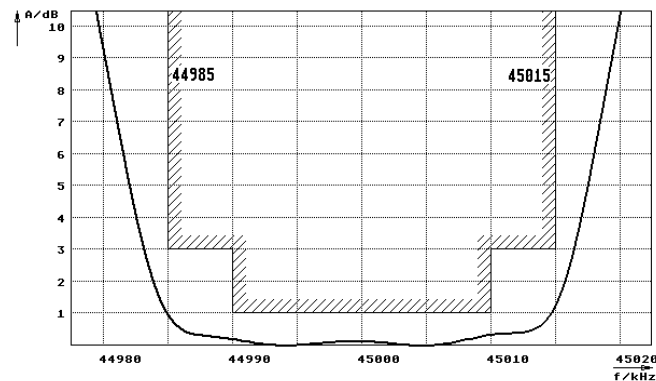
R1    C1		Ohm/pF	650    3
R2    C2		Ohm/pF	650    3
Coupling capacitance	Ck	pF	8.0

### Operating temp. range

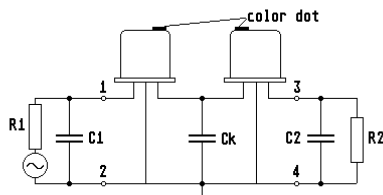
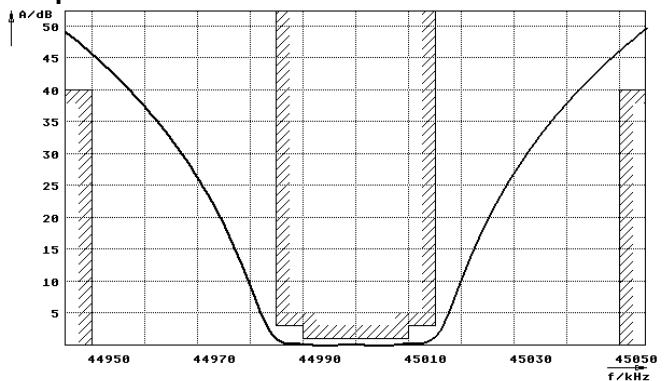
° C -20... +70

### Characteristics MQF45.0-3000/02

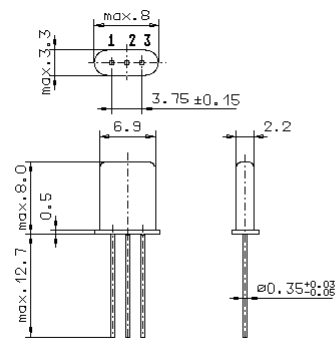
#### Pass band



#### Stop band



- Pin connections:
- 1 Input
  - 2 Ground-Input
  - 3 Output
  - 4 Ground-Output



GH9