

Features

- FCC part 15, VCCI.
- Leak current lower than 0.5mA (250V_{AC}, 60Hz).
- EN60320
- Two terminal styles (Faston[®], solder).
- Bleed resistor for electric shock protection.



Safety Agency : Standard	File No.
UL : UL-1283	E78644
CSA : C22.2, No.8-M1986	LR60681
SEMKO : EN133200	SE/0142-17

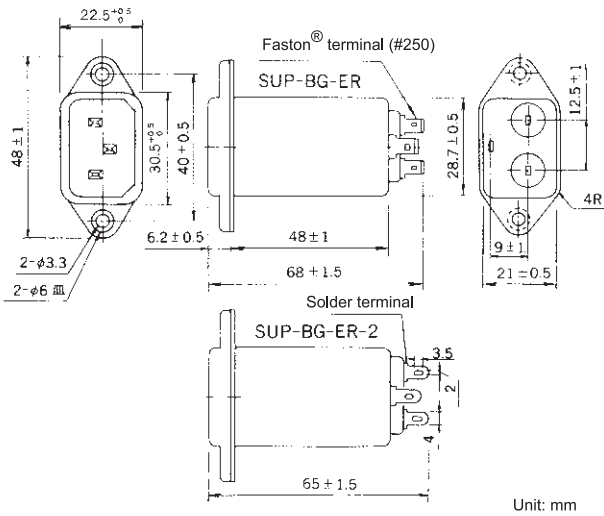
The "ENCE" mark is a common European product certification mark based on testing to harmonised European safety standard.

Applications

- PCs, Word processors, Printers, Measuring devices, Control systems, Office appliances.
- SUP-B□G-ER Series (Faston[®] terminal)
- SUP-B□G-ER-2 Series (Solder terminal)

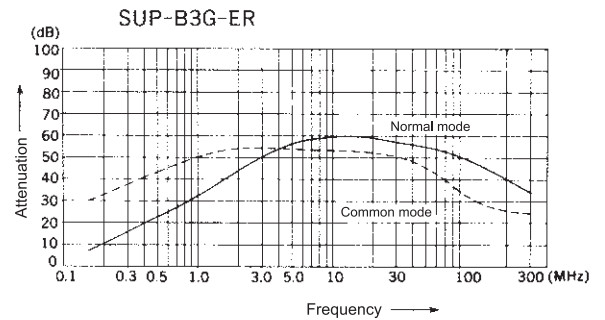


Dimensions

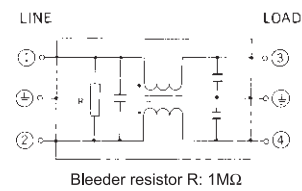


Recommended torque tightness less than 0.6N * m.

Static characteristics



Circuit



Electrical Specifications

Rated Voltage **250VAC**

Safety Agency	Model Number	Rated Current (A)	Test Voltage	Insulation Resistance	Leakage Current (max)	Voltage Drop (max)	Temperature Rise (max)	Operating Temperature (°C)	Insertion losses	
									Normal Mode (MHz)	Common Mode (MHz)
	SUP-B1G-ER(-2)	1	L to L 1000Vrms L to G 2240Vrms 50/60Hz 60sec	Line to Ground 6000MΩmin (at 500Vdc)	0.5mA (at 250Vrms 60Hz)	1.5Vrms 0.6Vrms 0.6Vrms	20deg	-25 ~ +65	1.0 ~ 100	0.2 ~ 50
	SUP-B3G-ER(-2)	3							3.0 ~ 100	0.5 ~ 50
	SUP-B6G-ER(-2)	6							4.0 ~ 100	2.0 ~ 50

Guaranteed attenuation is more than 30dB.