

## Multifunctional through hole DIP switches

### Features

#### Optimized Mechanical Features

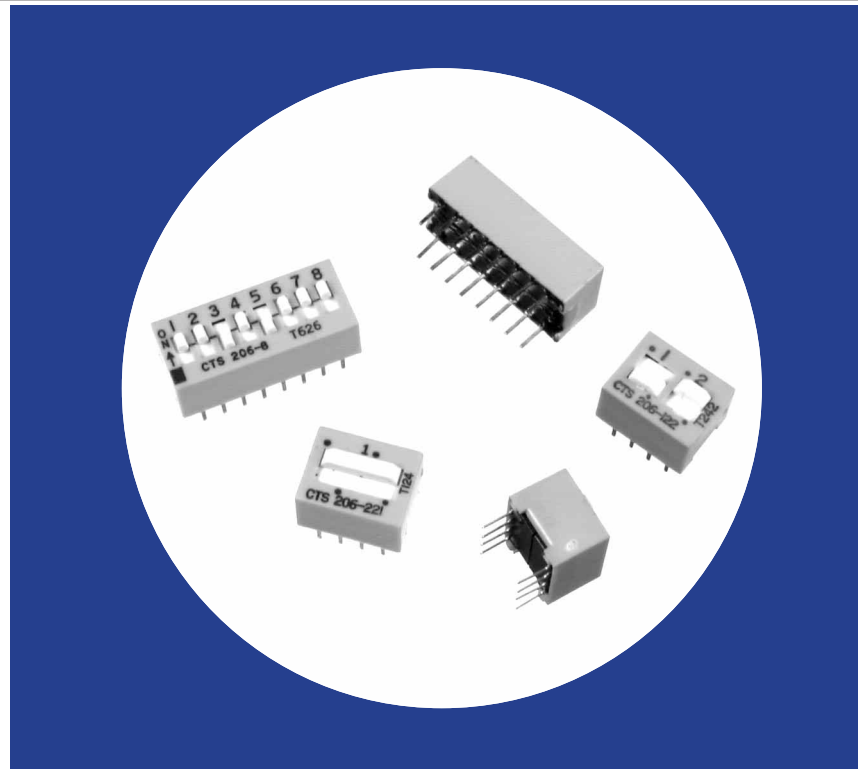
- Series 206 SPST, SPDT, DPST, DPDT, 3PST or 4PST circuitry choices
- Series 206 and Series 208 SPST available in 2 through 10 and 12 positions
- Standard 2.54mm (.100") x 7.62mm (.300") DIP centers
- Available with flush actuators for low profile SPST applications
- Sealed version optional; assures contaminant-free switch operation after flow soldering and cleaning

#### Optimized Contact System

- Contact wiping on make and break
- Integral terminal and contact locked into thermoset base
- Electrostatic discharge shield rated to 22 KV

#### Materials

- Series 206 gold-plated contacts for long-term contact corrosion resistance
- Series 208 tin-lead contacts
- All U.L. 94 V-0 plastics used



Series 206 – Premium Gold Plated Contacts  
Series 208 – Economical Tin-Lead Plated Contacts

## Electrical and Mechanical Specifications

#### Switch Function

- Series 206 and 208 single pole single throw
- Series 206 - single pole double throw
- double pole single throw
  - double pole double throw
  - 3 pole single throw
  - 4 pole single throw

#### Switch Contact Resistance

Switch Series	Initial, max.	End of life, max.
206	50 milliohms	100 milliohms
208	100 milliohms	500 milliohms

#### Insulation Resistance

- 1,000 megohms minimum across open switch
- 1,000 megohms minimum between adjacent closed switches

#### Dielectric Strength

- 500 VAC minimum for 1 minute between adjacent switches

#### Nonswitching Rating

- 100 mA or 50 VDC

#### Switch Capacitance

- 5.0 pF maximum between adjacent switches

#### Operating Temperature

- 55°C to +85°C

#### Actuation Life

- Series 206: 10,000 cycles switching  
50 mA @ 24 VDC
- Series 208: 2,000 cycles switching  
50 mA @ 15 VDC

#### Allowable Solder Time

- Up to 4 seconds with 260°C solder

#### Vibration

- Per MIL-STD-202F, method 204D, condition B with no contact inconsistencies greater than 1 microsecond

#### Shock

- Per MIL-STD-202F, method 213B, condition A with no contact inconsistencies greater than 1 microsecond

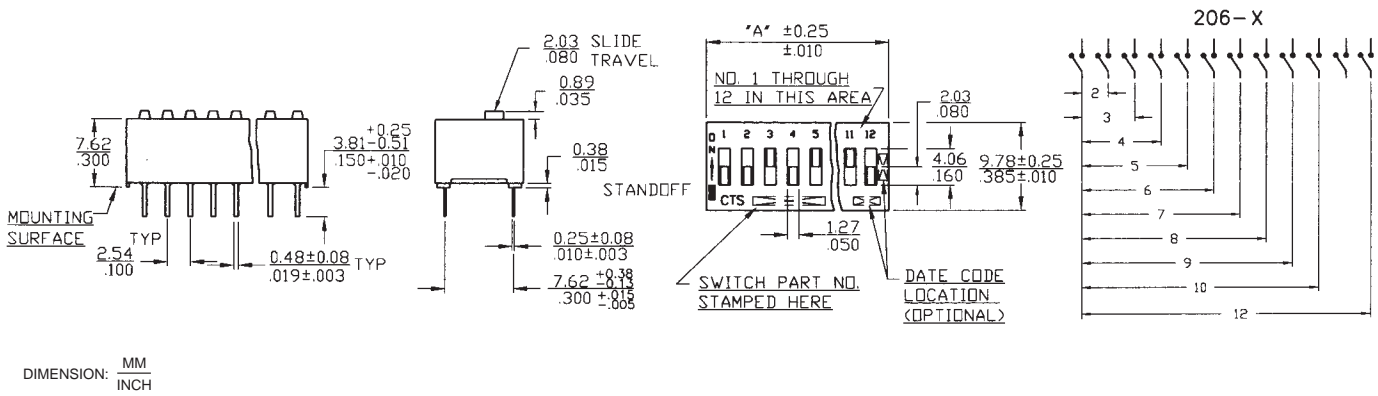
#### Sealing

- Bottom epoxy seal optional
- Top tape seal optional

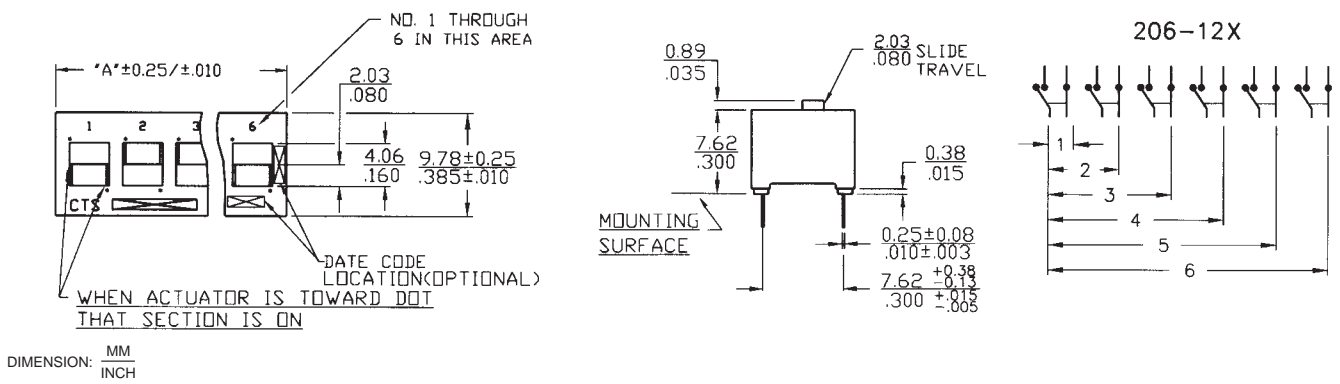
#### Marking

- Special side or top marking available-consult CTS

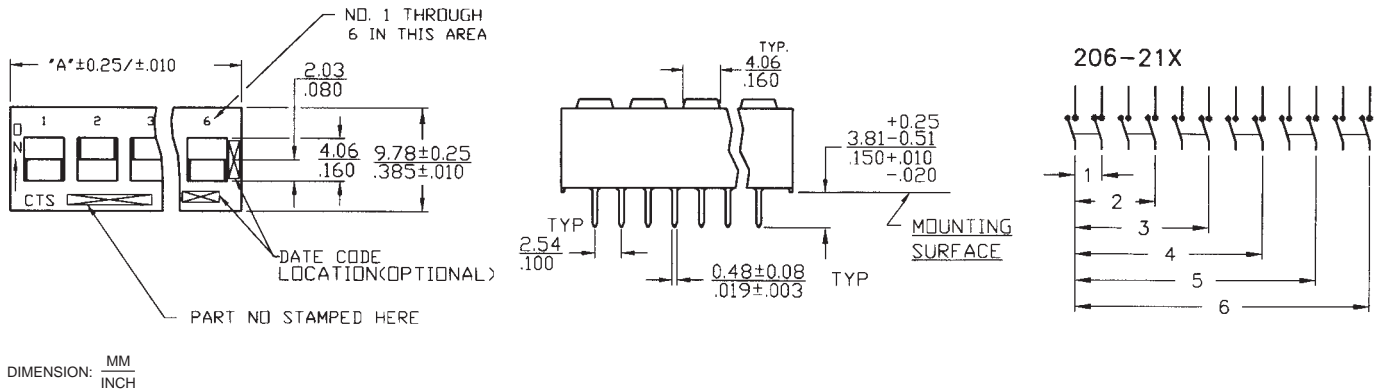
# SPST – Series 206 and Series 208



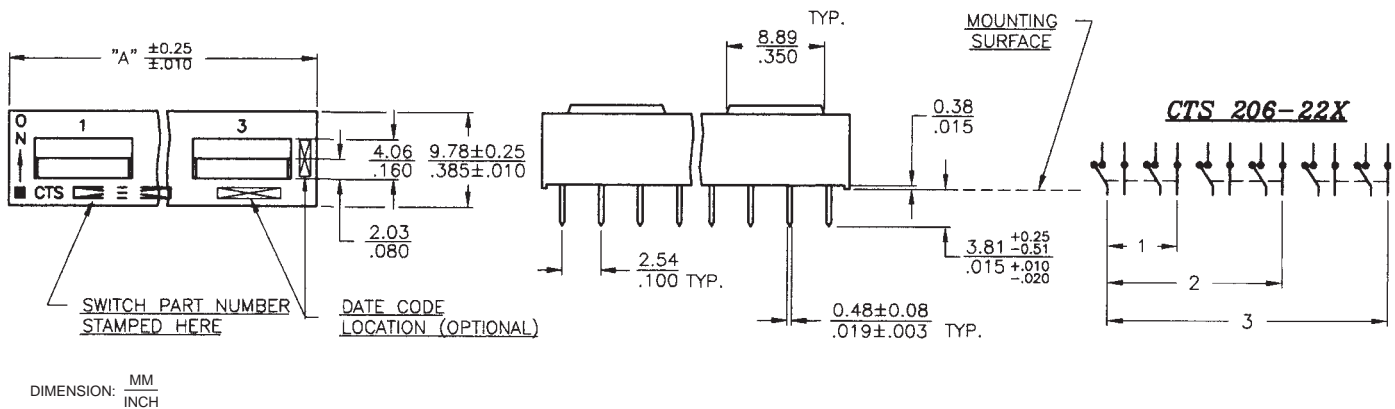
# SPDT – Series 206



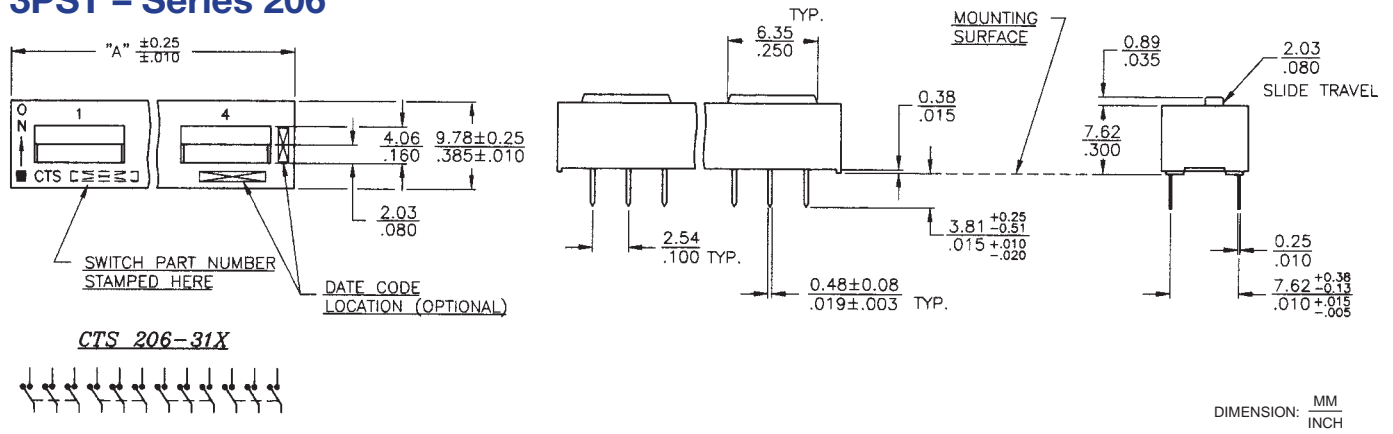
# DPST – Series 206



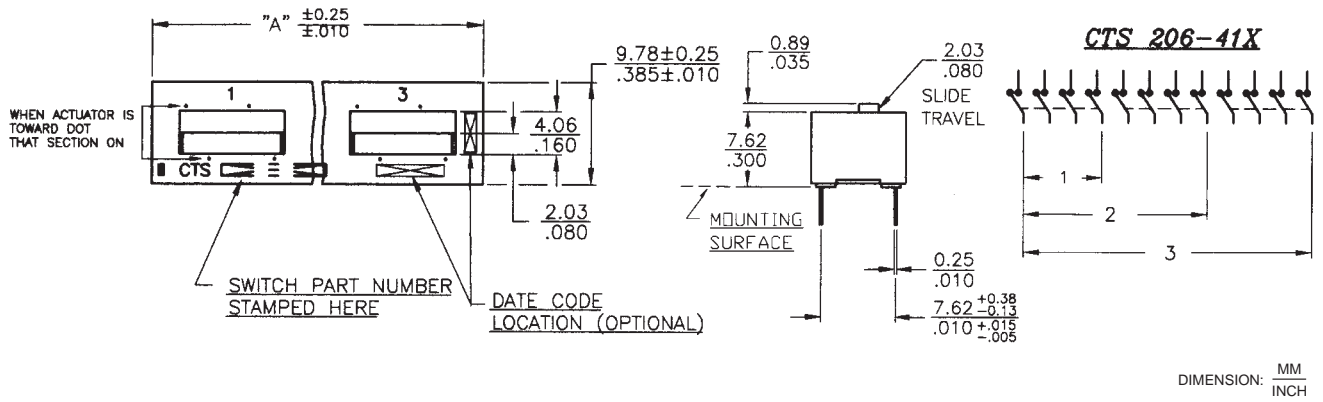
# DPDT – Series 206



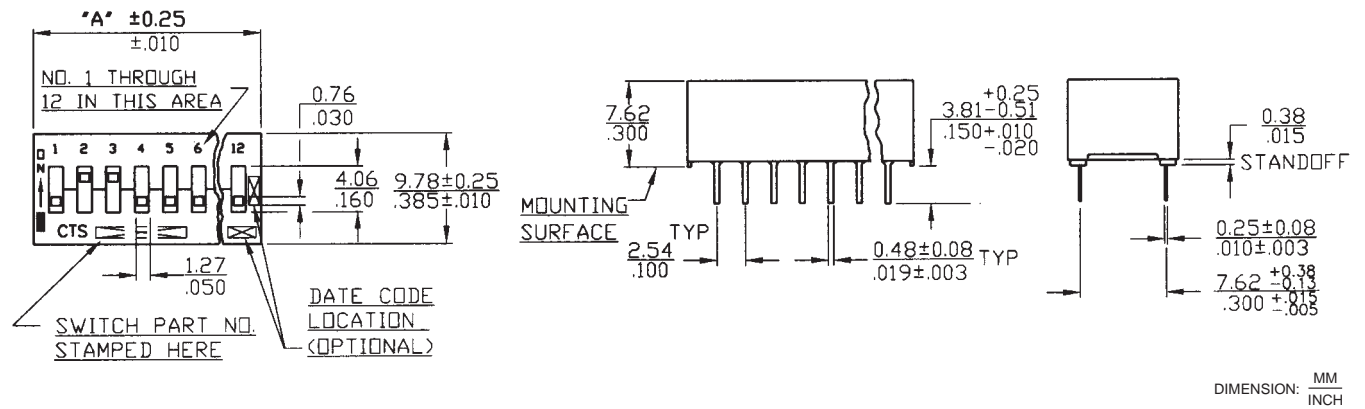
### 3PST – Series 206



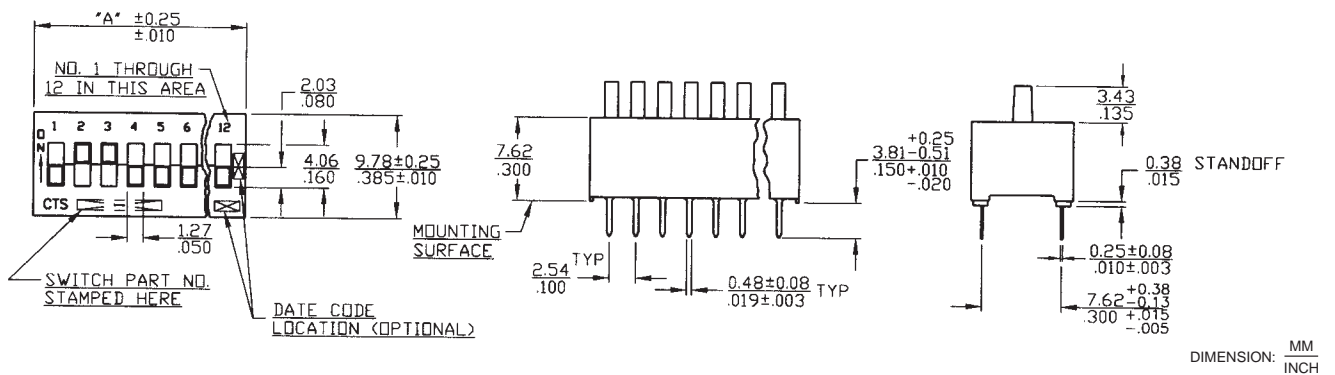
### 4PST – Series 206



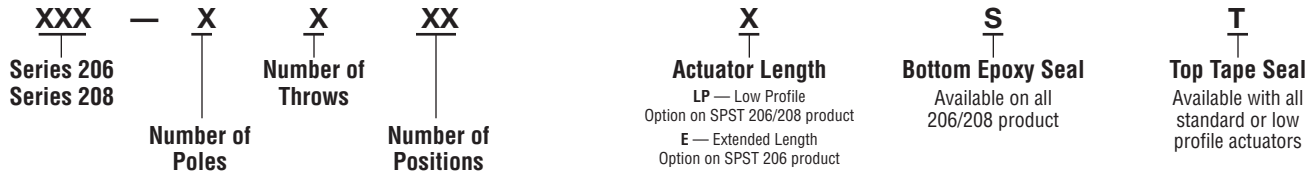
### Low Profile Actuators – Series 206 and Series 208, SPST



### Extended Actuators – Series 206, SPST



## Part Numbering Information



## Ordering Information

“A” Overall Dimensions	Number of Switch Sections	Actuation	Part Number	Both Bottom and Top Sealed	Low Profile Both Bottom and Top Sealed
7.26 / .286	2	SPST	206/208-2	206/208-2ST	206/208-2LPST
9.80 / .386	3	SPST	206/208-3	206/208-3ST	206/208-3LPST
12.34 / .486	4	SPST	206/208-4	206/208-4ST	206/208-4LPST
14.88 / .586	5	SPST	206/208-5	206/208-5ST	206/208-5LPST
17.42 / .686	6	SPST	206/208-6	206/208-6ST	206/208-6LPST
19.96 / .786	7	SPST	206/208-7	206/208-7ST	206/208-7LPST
22.50 / .886	8	SPST	206/208-8	206/208-8ST	206/208-8LPST
25.04 / .986	9	SPST	206/208-9	206/208-9ST	206/208-9LPST
27.58 / 1.086	10	SPST	206/208-10	206/208-10ST	206/208-10LPST
32.66 / 1.286	12	SPST	206/208-12	206/208-12ST	206/208-12LPST
7.26 / .286	1	SPDT	206-121	206-121ST	
12.34 / .486	2	SPDT	206-122	206-122ST	
17.42 / .686	3	SPDT	206-123	206-123ST	
22.50 / .886	4	SPDT	206-124	206-124ST	
27.58 / 1.086	5	SPDT	206-125	206-125ST	
32.66 / 1.286	6	SPDT	206-126	206-126ST	
7.26 / .286	1	DPST	206-211	206-211ST	
12.34 / .486	2	DPST	206-212	206-212ST	
17.42 / .686	3	DPST	206-213	206-213ST	
22.50 / .886	4	DPST	206-214	206-214ST	
27.58 / 1.086	5	DPST	206-215	206-215ST	
32.66 / 1.286	6	DPST	206-216	206-216ST	
12.34 / .486	1	DPDT	206-221	206-221ST	
22.50 / .886	2	DPDT	206-222	206-222ST	
32.66 / 1.286	3	DPDT	206-223	206-223ST	
9.80 / .386	1	3PST	206-311	206-311ST	
17.42 / .686	2	3PST	206-312	206-312ST	
25.04 / .986	3	3PST	206-313	206-313ST	
32.66 / 1.286	4	3PST	206-314	206-314ST	
12.34 / .486	1	4PST	206-411	206-411ST	
22.50 / .886	2	4PST	206-412	206-412ST	
32.66 / 1.286	3	4PST	206-413	206-413ST	

## Order From:

**CTS CORPORATION, ELECTROCOMPONENTS** / 1601 Mishawaka Street / Elkhart, Indiana 46514  
 North America Toll Free (888) 287-4690 / (219) 296-6700 / FAX: (219) 293-1240 <http://www.ctscorp.com>

**CTS COMPONENTS TAIWAN, LTD.** / 7, Central 6th Road (Chung Liu Road) / P.O. Box 26-20  
 Kaohsiung Export Processing Zone / Kaohsiung, Taiwan, Rep. of China  
 (07) 8216145 / FAX: (07) 8417642.8110040