

PLEASE CHECK WWW.MOLEX.COM FOR LATEST PART INFORMATION

Part Number: [0955036651](#)
Status: **Active**
Overview: [modular_plugs_jacks](#)
Description: 6/4 JACK SMT VERSION

Documents:

3D Model	Product Specification PS-95503-001 (PDF)
Drawing (PDF)	RoHS Certificate of Compliance (PDF)
Application Specification (PDF)	

Agency Certification

UL	E107635
----	---------

General

Product Family	Modular Jacks/Plugs
Series	95503
Component Type	PCB Jack
Magnetic	No
Overview	modular_plugs_jacks
Performance Category	3
Power over Ethernet (PoE)	N/A
Product Name	RJ11

Physical

Boot Color	N/A
Color - Resin	Black
Durability (mating cycles max)	1,000
Flammability	94V-0
Inverted / Top Latch	No
Lightpipes/LEDs	None
Material - Metal	Brass
Material - Plating Mating	Gold
Material - Plating Termination	Tin
Material - Resin	High Temperature Thermoplastic
Orientation	Vertical (Top Entry)
PCB Locator	Yes
PCB Retention	Yes
PCB Thickness Recommended (in)	0.062 In
PCB Thickness Recommended (mm)	1.57 mm
Packaging Type	Tube
Pitch - Mating Interface (in)	0.040 In
Pitch - Mating Interface (mm)	1.02 mm
Pitch - Term. Interface (in)	0.050 In
Pitch - Term. Interface (mm)	1.27 mm
Plating min: Mating (µin)	50.8
Plating min: Mating (µm)	1.27
Plating min: Termination (µin)	76
Plating min: Termination (µm)	1.9
Ports	1
Positions / Loaded Contacts	6/4
Surface Mount Compatible (SMC)	Yes
Temperature Range - Operating	-40°C to +80°C
Termination Interface: Style	Surface Mount
Waterproof / Dustproof	No
Wire/Cable Type	N/A

EU RoHS

**ELV and RoHS
Compliant**
**REACH SVHC
Contains SVHC: No**
**Halogen-Free
Status**
Halogen-Free

China RoHS



**Need more information on product
environmental compliance?**

Email productcompliance@molex.com
 For a multiple part number RoHS Certificate of
 Compliance, [click here](#)

Please visit the [Contact Us](#) section for any
 non-product compliance questions.

Search Parts in this Series

[95503Series](#)

Mates With

FCC 68 Plugs

Electrical

Current - Maximum per Contact	1.5A
Shielded	No
Voltage - Maximum	125V DC

Solder Process Data

Duration at Max. Process Temperature (seconds)	40
Lead-free Process Capability	Reflow Capable (SMT only)
Max. Cycles at Max. Process Temperature	3
Process Temperature max. C	260

Material Info**Reference - Drawing Numbers**

Product Specification	PS-95503-001
Sales Drawing	SD-95503-003

This document was generated on 06/07/2010

PLEASE CHECK WWW.MOLEX.COM FOR LATEST PART INFORMATION

NOTES :

1- MATERIAL:

-HOUSING: LCP FIBER GLASS FILLED UL 94-V0
COLOR BLACK.

-TERMINAL: TIN BRASS.

PLATING 2:

POST PLATE (0.00127-0.00152)/.000050-.000060 GOLD IN CONTACT AREA. (0.00190)/.000075 MIN. PURE TIN IN TAIL AREA BOTH OVER (0.00127)/.000050 MIN. NICKEL OVERALL.

PLATING 7: ONLY ON REQUEST

POST PLATE 0.00005/.000002 MIN GOLD OVER 0.000763 .000030 MIN PALLADIUM NICKEL IN CONTACT AREA.

0.00190/.000075 MIN PURE TIN IN TAIL AREA. BOTH OVER 0.00127/.000050 MIN NICKEL OVERALL:

2- JACK FOR MATING WITH F.C.C. 68 PLUGS
90075 MOLEX SERIES.

3- PRODUCT SPECIFICATION PS-95503-001

4- PACKAGING SPECIFICATION PK-95003:

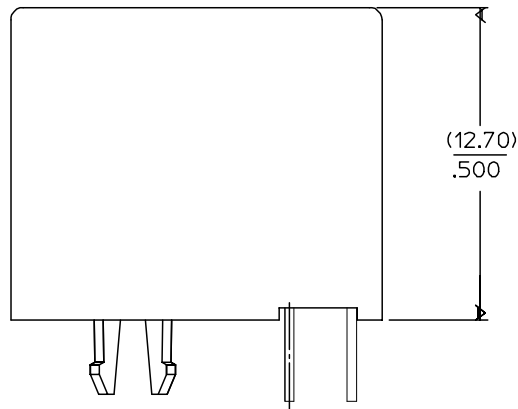
- STANDARD PACKAGING SHEET 1.

- TUBE PACKAGING FOR SMT VERSION SHEET 2.

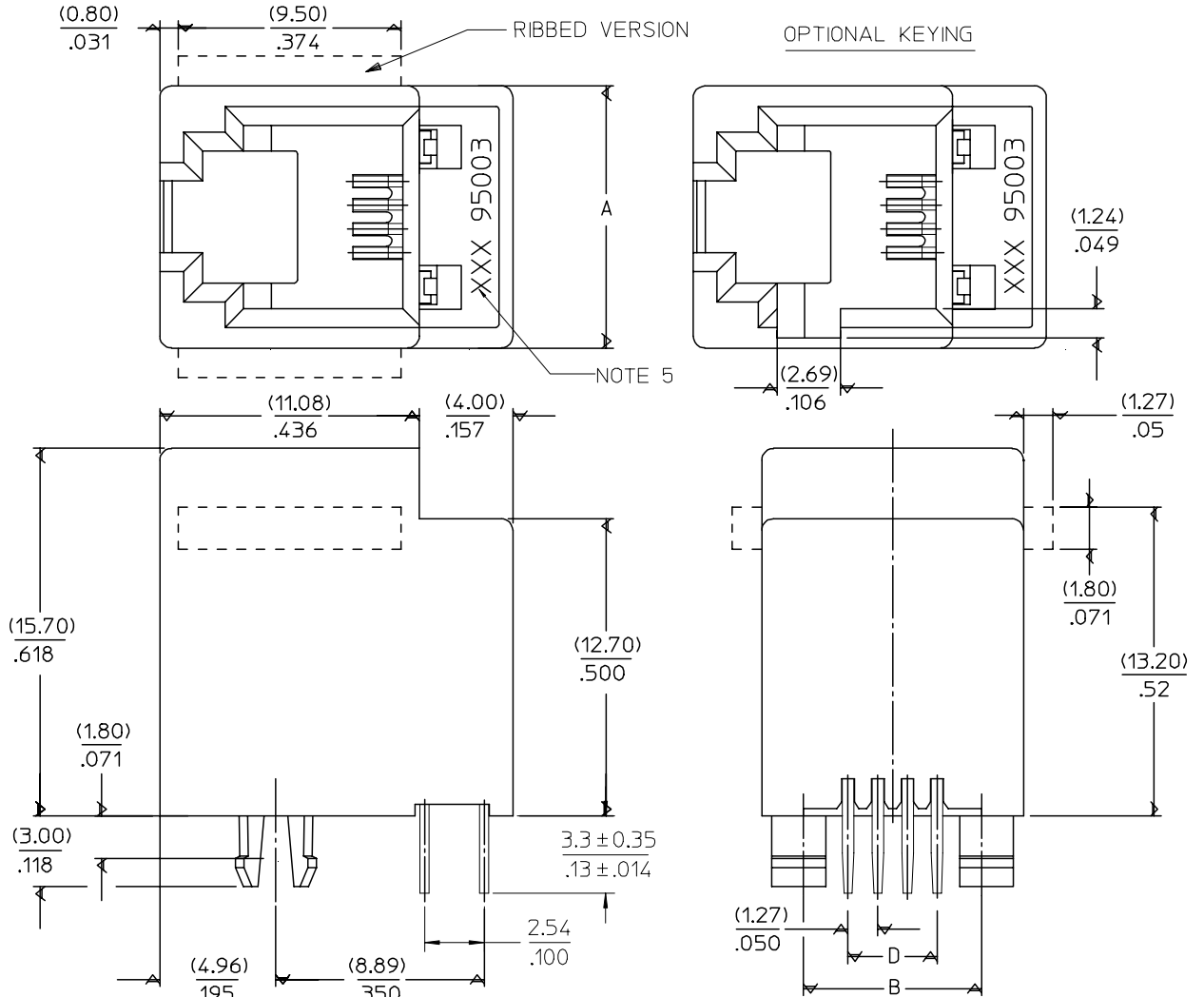
- TUBE PACKAGING FOR THROUGH HOLE VERSION SHEET 3.

5- MANUFACTURING I.D. CAN BE MXF, MG OR MXI.

TYPE \ DIM.	POS. 4	POS. 6		POS. 8
	4 CKTS.	4 CKTS.	6 CKTS.	8 CKTS.
A	(11.18) / .440	(13.21) / .520	(13.21) / .520	(15.24) / .600
B	(7.62) / .300	(10.16) / .400	(10.16) / .400	(11.43) / .450
D	(3.81) / .150	(3.81) / .150	(6.35) / .250	(8.89) / .350



SHORT VERSION



ADDED TABLE EC NO: E2008-0267 DRWN: DBRYNES CHKD: APPR: EOMAHONY	QUALITY SYMBOLS ▽=0 ▽=0	GENERAL TOLERANCES (UNLESS SPECIFIED) mm INCH 4 PLACES ± --- ± --- 3 PLACES ± --- ± .006 2 PLACES ± 0.15 ± .010 1 PLACE ± 0.25 ± --- ANGULAR ± .5 °	DIMENSION STYLE MM/IN DRAWN BY DATE TMARTIN 2005/06/15 CHECKED BY DATE FCARABETTA 2005/06/15 APPROVED BY DATE KNOLLER 2005/06/15	SCALE 5:1	DESIGN UNITS METRIC	THIRD ANGLE PROJECTION
	LOW PROFILE TOP ENTRY JACK (THROUGH HOLE VERSION)					
	MOLEX INCORPORATED					
	DRAFT WHERE APPLICABLE MUST REMAIN WITHIN DIMENSIONS			MATERIAL NO. SEE SHT 4,5	DOCUMENT NO. SD-95503-003	SHEET NO. 1 OF 5

10

9

8

7

6

5

4

3

2

1

NOTES :

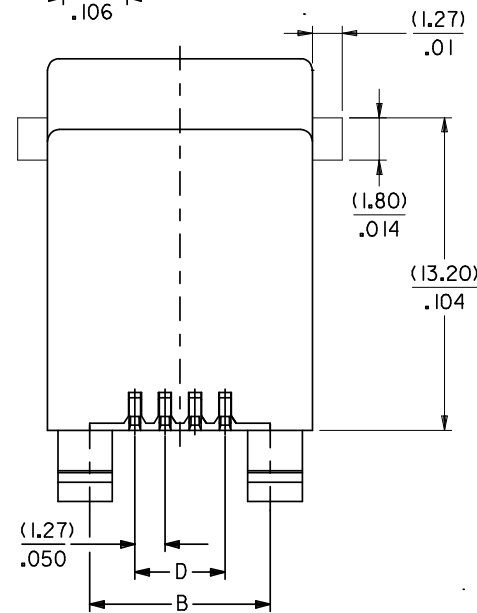
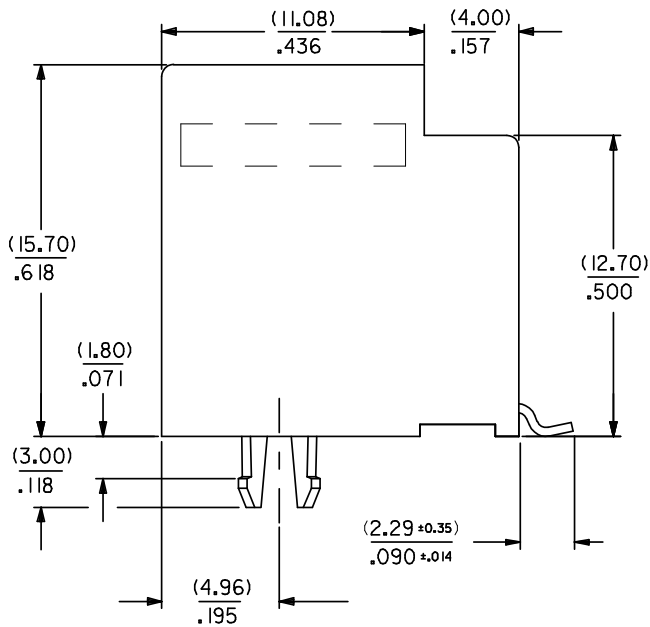
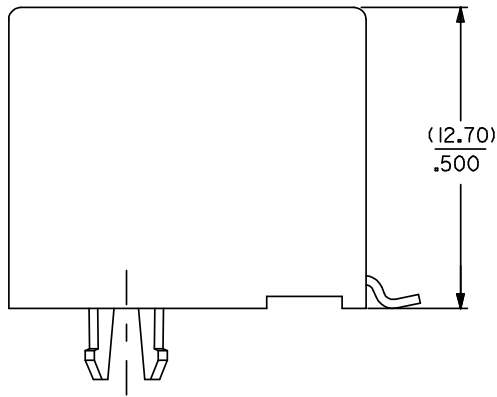
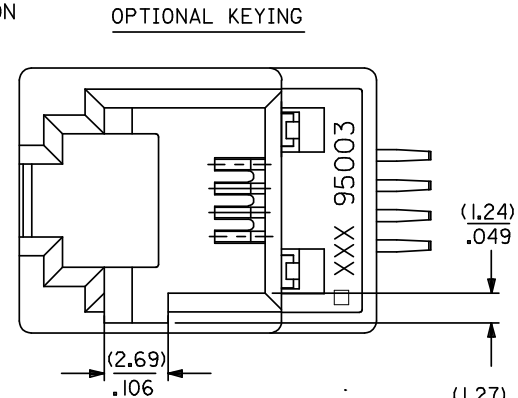
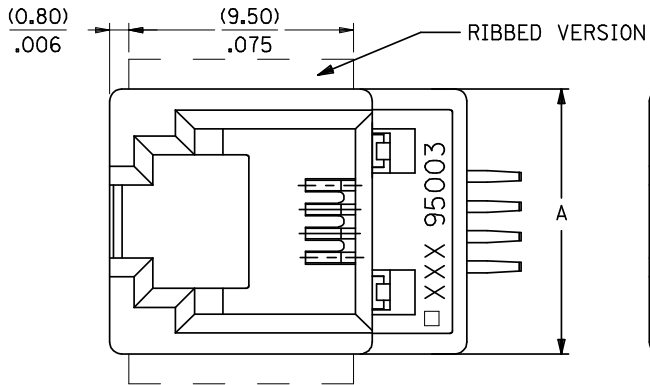
1- MATERIAL:

-HOUSING: LC P FIBER GLASS FILLED UL 94-V0
COLOR BLACK

2- APPLICATION SPECIFICATION: AS-85513-001 (SMT)

3- SEE OTHER NOTES SHEET 1.

4- COPLANARITY OF SIGNAL TAILS 0.1mm MAX
RELEVANT TO EACH OTHER.



SHORT VERSION

TYPE	POS. 4		POS. 6		POS. 8
	4 CKTS.	4 CKTS.	6 CKTS.	6 CKTS.	8 CKTS.
A	(11.18) / .440	(13.21) / .520	(13.21) / .520	(15.24) / .600	
B	(7.62) / .300	(10.16) / .400	(10.16) / .400	(11.43) / .450	
D	(3.81) / .150	(3.81) / .150	(6.35) / .250	(8.89) / .350	

ADDED NOTE 4. EC NO: E2008-0585 DRWINGBYRNES 2008/04/22 CHKD: 2008/04/22 APPR: EDMAHONY 2008/04/22	QUALITY SYMBOLS	$\nabla=0$ $\nabla=0$
	DESCRIPTION	
	REV	

GENERAL TOLERANCES (UNLESS SPECIFIED)	DIMENSION STYLE MM/IN	
	mm	INCH
4 PLACES	± .006	± .006
3 PLACES	± .006	± .006
2 PLACES	± 0.15	± .010
1 PLACE	± 0.25	± .010
ANGULAR ± .5 °		
DRAFT WHERE APPLICABLE MUST REMAIN WITHIN DIMENSIONS		

DRAWN BY	DATE
TMART IN	2005/06/19
CHECKED BY	DATE
FCARABETTA	2005/06/19
APPROVED BY	DATE
KNOLLER	2005/06/19
MATERIAL NO.	
SEE SHT. 4, 5	

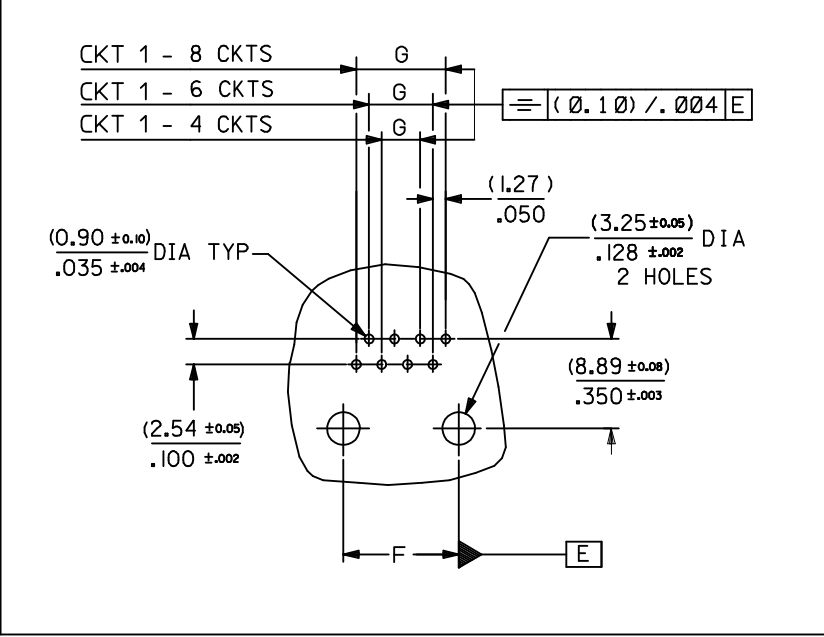
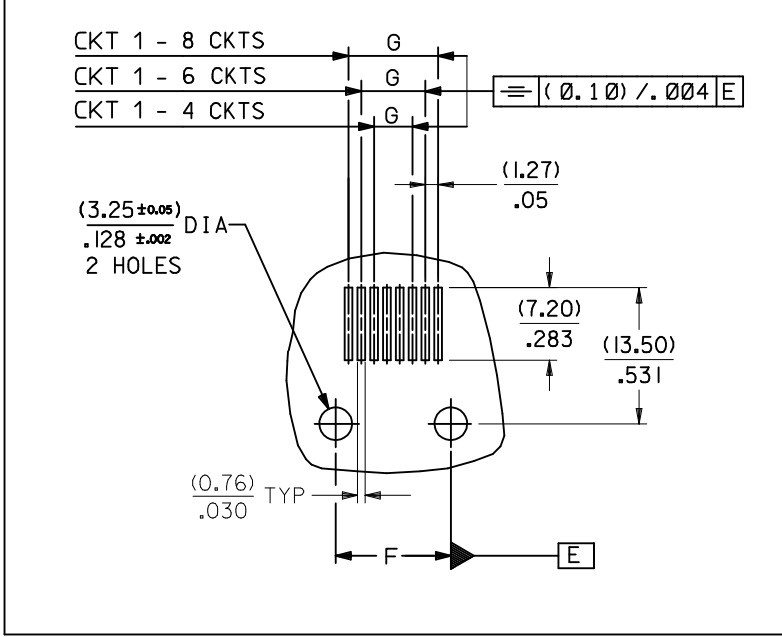
SCALE	DESIGN UNITS	THIRD ANGLE PROJECTION
5:1	METRIC	
TITLE		
LOW PROFILE T/E JACK (SMT VERSION)		
MOLEX INCORPORATED		SHEET NO.
DOCUMENT NO. SD-95503-003		2 OF 5
THIS DRAWING CONTAINS INFORMATION THAT IS PROPRIETARY TO MOLEX INCORPORATED AND SHOULD NOT BE USED WITHOUT WRITTEN PERMISSION		

TYPE DIM.	POS. 4	POS. 6		POS. 8
	4 CKTS.	4 CKTS.	6 CKTS.	8 CKTS.
F (± 0.05)/ ± 0.002	(7.62) / .300	(10.16) / .400	(10.16) / .400	(11.43) / .450
G (± 0.05)/ ± 0.002	(3.81) / .150	(3.81) / .150	(6.35) / .250	(8.89) / .350

P.C.B MOUNTING PATTERNS - SEEN FROM COMPONENT SIDE

FOR SMT JACK (SURFACE MOUNT)

FOR STANDARD JACK (THROUGH HOLE)



ARDED CKT 1 EC NO: E2010-0075 DRWN: DBYRNES 2009/08/13 CHKD: 2009/08/19 APPR: J WALLACE 2009/08/19	QUALITY SYMBOLS	DESCRIPTION
	$\nabla = 0$	
	$\square = 0$	
	REV	

GENERAL TOLERANCES (UNLESS SPECIFIED)	mm	INCH
4 PLACES	\pm ---	\pm ---
3 PLACES	\pm ---	$\pm .006$
2 PLACES	± 0.15	$\pm .010$
1 PLACE	± 0.25	\pm ---
ANGULAR $\pm .5^\circ$		
DRAFT WHERE APPLICABLE MUST REMAIN WITHIN DIMENSIONS		

DIMENSION STYLE	MM/IN
DRAWN BY	DATE
T. MARTIN	2005/06/15
CHECKED BY	DATE
F. CARABETTA	2005/06/15
APPROVED BY	DATE
KNOLLER	2005/06/15
MATERIAL NO.	
SEE SHT. 4, 5	

SCALE	1:1
DESIGN UNITS	METRIC
THIRD ANGLE PROJECTION	
TITLE	
LOW PROFILE T/E JACK	
MOLEX INCORPORATED	
DOCUMENT NO.	SHEET NO.
SD-95503-003	3 OF 5
THIS DRAWING CONTAINS INFORMATION THAT IS PROPRIETARY TO MOLEX INCORPORATED AND SHOULD NOT BE USED WITHOUT WRITTEN PERMISSION	

TUBE PACKAGING, SEE PACKAGING SPEC. PK 95003
SHEET 2

PART NO FOR JACK ASSEMBLY
S.M.T. STANDARD VERSION

HOUSING SIZE	LOADED CONTACTS	PLATING	LCP FIBER GLASS FILLED 94V0, COLOR BLACK.															
			NO KEY	TOOLED	KEY	TOOLED	NO KEY	TOOLED		TOOLED								
			NO RIB		NO RIB		RIB											
4	4	2	95503-6451	X														
6	4	2	95503-6651	X														
6	6	2	95503-6671	X														
8	8	2	95503-6891	X				95503-6887	X									
		2																

PART NO FOR JACK ASSEMBLY
S.M.T. SHORT VERSION

LCP FIBER GLASS FILLED 94V0, COLOR BLACK.								
NO KEY	TOOLED	KEY	TOOLED	NO KEY	TOOLED		TOOLED	
NO RIB		NO RIB		RIB				
95503-6894	X							

TOOLED	<input checked="" type="checkbox"/>
NOT TOOLED	<input type="checkbox"/>

<p>REMOVED PART #'s</p> <p>EC NO: E2007-1039 2007/06/26</p> <p>DRWN:DBYRNES 2007/06/26</p> <p>CHKD: 2007/06/26</p> <p>APPR:EDMAHONY 2007/07/09</p>	QUALITY SYMBOLS	GENERAL TOLERANCES (UNLESS SPECIFIED)	DIMENSION STYLE	SCALE	DESIGN UNITS	THIRD ANGLE PROJECTION	
	<p>▽=0</p> <p>∇=0</p>	mm INCH	MM/IN	---	METRIC		
		4 PLACES ±--- ±---	DRAWN BY DATE	TITLE	LOW PROFILE T/E JACK SMT VERSION		
		3 PLACES ±--- ±---	TMARTIN 2005/06/16	CHECKED BY DATE			
	2 PLACES ±--- ±---	FCARABETTA 2005/06/16	APPROVED BY DATE	MOLEX INCORPORATED			
	1 PLACE ±--- ±---	KNOLLER 2005/06/16	MATERIAL NO.	DOCUMENT NO.	SHEET NO.		
	ANGULAR ±---°		SEE CHART	SD-95503-003	5 OF 5		
		DRAFT WHERE APPLICABLE MUST REMAIN WITHIN DIMENSIONS	THIS DRAWING CONTAINS INFORMATION THAT IS PROPRIETARY TO MOLEX INCORPORATED AND SHOULD NOT BE USED WITHOUT WRITTEN PERMISSION				