

**PLEASE CHECK WWW.MOLEX.COM FOR LATEST PART INFORMATION**

**Part Number:** [0512170705](#)  
**Status:** **Active**  
**Description:** 2.00mm (.079") Wire-to-Board Connector Retainer, 7 circuits

**Documents:**

|  |  |
|--|--|
| <a href="#">3D Model</a>                                 | <a href="#">Product Specification PS-51216-006 (PDF)</a> |
| <a href="#">Drawing (PDF)</a>                            | <a href="#">Product Specification PS-51216-007 (PDF)</a> |
| <a href="#">Product Specification PS-51216-005 (PDF)</a> | <a href="#">RoHS Certificate of Compliance (PDF)</a>     |

**General**

|                |                       |
|----------------|-----------------------|
| Product Family | Accessories           |
| Series         | <a href="#">51217</a> |
| Component Type | Retainer              |
| Product Name   | N/A                   |

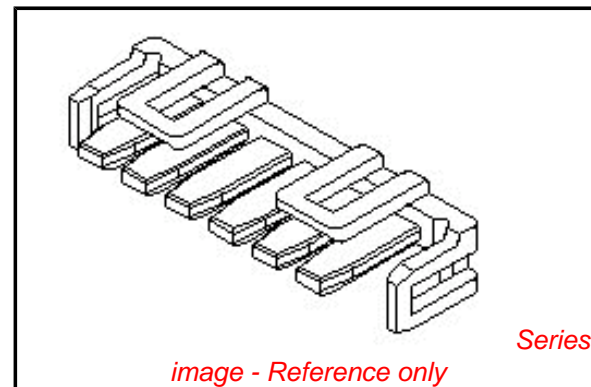
**Physical**

|                               |                |
|-------------------------------|----------------|
| Circuits (Loaded)             | 7              |
| Color - Resin                 | Gray           |
| Material - Resin              | Polyester      |
| Number of Rows                | 1              |
| Packaging Type                | Bag            |
| Temperature Range - Operating | -25°C to +85°C |

**Material Info**

**Reference - Drawing Numbers**

|                       |   |
|-----------------------|---|
| Product Specification | PS-51216-005, PS-51216-006, PS-51216-007, RPS-51216-003, RPS-51216-004, RPS-51216-005, RPS-51216-006, RPS-51216-008, RPS-51216-009, RPS-51216-010, RPS-51216-011, RPS-51216-012 |
| Sales Drawing         | SD-51217-003  |



*image - Reference only*

**EU RoHS**

**ELV and RoHS Compliant**  
**REACH SVHC**  
**Contains SVHC: No**  
**Halogen-Free**  
**Status**

**China RoHS**



**Not Reviewed**

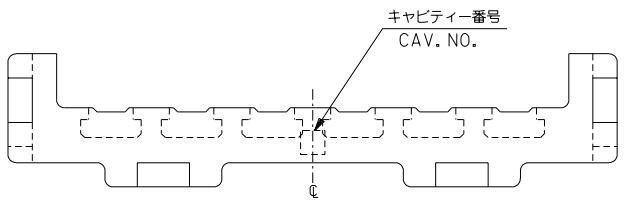
**Need more information on product environmental compliance?**

Email [productcompliance@molex.com](mailto:productcompliance@molex.com)  
 For a multiple part number RoHS Certificate of Compliance, [click here](#)

Please visit the [Contact Us](#) section for any non-product compliance questions.

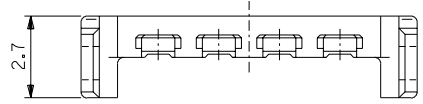
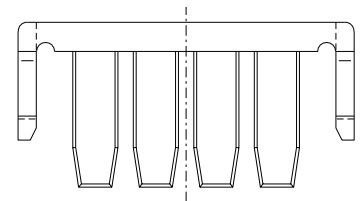
**Search Parts in this Series**  
[51217Series](#)

**Use With**  
[51216](#) , [51227](#)

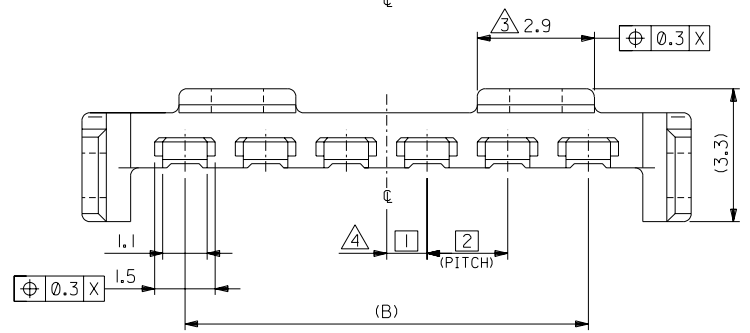
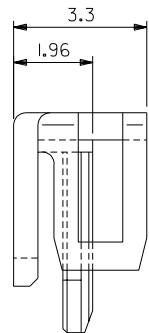
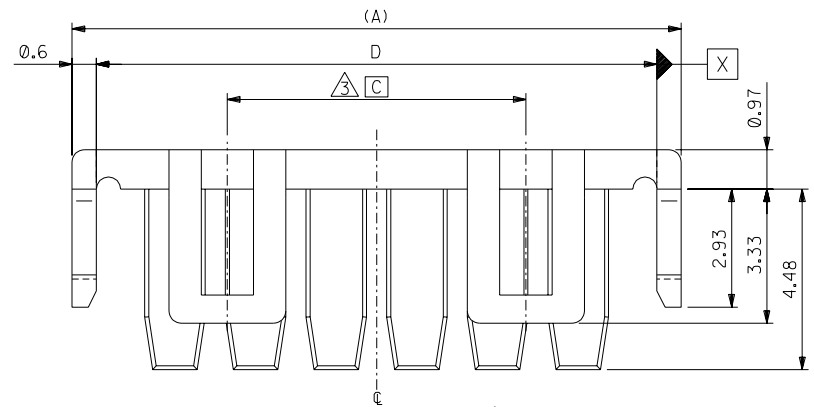


注記 NOTES

1. 適合ターミナル : 59370シリーズ  
APPLICABLE TERMINAL : 59370 SERIES
2. 適合ハウジング : 51216シリーズ  
APPLICABLE HOUSING : 51216 SERIES
- ③ 5~15種に適用。  
APPLY 5-15 CIRCUITS.
- ④ 偶数極に適用。  
APPLY EVEN CIRCUIT PRODUCTS.



4種以下品形状  
DESIGN OF UNDER 4CKTS.  
(SCALE 6:1)



|      |     |              |      |            |      |
|------|-----|--------------|------|------------|------|
| 31.9 | 7.4 | 28           | 33.1 | 51217-1505 | 15   |
| 29.9 |     | 26           | 31.1 | -1405      | 14   |
| 27.9 |     | 24           | 29.1 | -1305      | 13   |
| 25.9 |     | 22           | 27.1 | -1205      | 12   |
| 23.9 |     | 20           | 25.1 | -1105      | 11   |
| 21.9 |     | 18           | 23.1 | -1005      | 10   |
| 19.9 |     | 16           | 21.1 | -0905      | 9    |
| 17.9 |     | 14           | 19.1 | -0805      | 8    |
| 15.9 |     | 12           | 17.1 | -0705      | 7    |
| 13.9 |     | 10           | 15.1 | -0605      | 6    |
| 11.9 | 7.4 | 8            | 13.1 | -0505      | 5    |
| 9.9  |     | 6            | 11.1 | -0405      | 4    |
| 7.9  |     | 4            | 9.1  | -0305      | 3    |
| 5.9  |     | 2            | 7.1  | 51217-0205 | 2    |
|      |     | D            | C    | B          | A    |
|      |     | MATERIAL NO. |      |            | CKT. |

DO NOT SCALE DRAWING

|                                  |                                  |                                  |  |                    |   |   |                                 |  |  |  |  |   |  |
|----------------------------------|----------------------------------|----------------------------------|--|--------------------|---|---|---------------------------------|--|--|--|--|---|--|
| EC NO.<br>DRWN:<br>CHK:<br>APPR: | EC NO.<br>DRWN:<br>CHK:<br>APPR: | EC NO.<br>DRWN:<br>CHK:<br>APPR: | REVISED  | MATERIAL<br>材料     | GENERAL TOLERANCES:<br>(UNLESS SPECIFIED)<br>一般公差 | 51217-**-05                                 |                                 | MODEL NO.  |  | DIMENSIONS:  |  | SHT   | REV  |
|                                  |                                  |                                  | EC NO. J2004-1674<br>DRWN:K.SETO '03/12/22<br>CHK: H.TAKASE<br>APPR:J.MIYAZAWA 12/22     |                    |   | PBTP, UL94V-0<br>[色:灰色]<br>[COLOR: GRAY]    | SCALE<br>8:1                    | DESIGN UNITS<br><input checked="" type="checkbox"/> mm <input type="checkbox"/> INCH | <input checked="" type="checkbox"/> THIRD ANGLE<br><input type="checkbox"/> PROJECTION | <input type="checkbox"/> mm<br><input type="checkbox"/> INCH | <input type="checkbox"/> mm<br><input type="checkbox"/> INCH | <input checked="" type="checkbox"/> mm<br><input type="checkbox"/> ONLY | REVISE ON<br>CAD ONLY                      |
|                                  |                                  |                                  | RELEASED   | FINISH<br>仕上げ      | 10 UNDER<br>未満 ±0.2                               | DRAWN BY & DATE<br>T.YASUI '00/ 2/22        |                                 | TITLE:<br>2.0 mm WIRE TO BOARD CONN.<br>RETAINER                                     |  |  |  |   |  |
|                                  |                                  |                                  | EC NO. JC2000-0550<br>DRWN:T.YASUI '00/2/22<br>CHK: T.YAMAGUCHI<br>APPR:M.FUKUSHIMA 2/22 |                    |   | WIRE RANGE<br>適用線径範囲                        | 10 OVER 30 UNDER<br>以上 未満 ±0.25 |  |  |  |  |   | CHECKED BY & DATE<br>T.YAMAGUCHI '00/ 2/22 |
|                                  |                                  |                                  | 0  | INS. RANGE<br>被覆外径 | 30 OVER<br>以上 ±0.3                                | APPROVED BY & DATE<br>M.FUKUSHIMA '00/ 2/22 |                                 | MOLEX MOLEX INCORPORATED   |  |  |  |   |  |
|                                  |                                  |                                  | A  | REV                | ANGLE 角度 ±3°                                      | CAD FILENAME<br>51217003.S01                | MATERIAL NO.<br>SEE CHART       |  |  |  |  |   | DRAWING NO.<br>SD-51217-003                |

THIS DRAWING CONTAINS INFORMATION THAT IS PROPRIETARY TO MOLEX INCORPORATED AND SHOULD NOT BE USED WITHOUT WRITTEN PERMISSION.