

PLEASE CHECK WWW.MOLEX.COM FOR LATEST PART INFORMATION

Part Number: [0433742001](#)
Status: **Active**
Overview: [sabre](#)
Description: Sabre™ Crimp Terminal, Female, With Tin (Sn) Plated Brass Contact, 18-20 AWG, Reel Packaged, without TPA, UL1007 or UL1015 Wire

Documents:

[Drawing \(PDF\)](#) [RoHS Certificate of Compliance \(PDF\)](#)

General

Product Family	Crimp Terminals
Series	43374
Crimp Quality Equipment	Yes
Overview	sabre
Product Literature Order No	USA-113
Product Name	Sabre™

Physical

Durability (mating cycles max)	25
Gender	Female
Material - Metal	Brass
Material - Plating Mating	Tin
Material - Plating Termination	Tin
Packaging Type	Reel
Plating min: Mating (µin)	20
Plating min: Mating (µm)	0.50
Plating min: Termination (µin)	20
Plating min: Termination (µm)	0.50
Termination Interface: Style	Crimp or Compression
Wire Insulation Diameter	.071mm-.112mm
Wire Size AWG	18, 20
Wire Size mm²	N/A

Electrical

Current - Maximum per Contact	12A
-------------------------------	-----

Material Info

Reference - Drawing Numbers

Sales Drawing	SD-43374-301
---------------	--------------

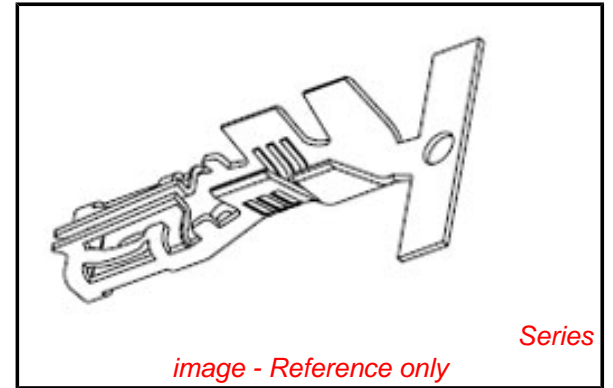


image - Reference only

EU RoHS

**ELV and RoHS
Compliant**
**REACH SVHC
Contains SVHC: No**
**Halogen-Free
Status**

China RoHS



**Need more information on product
environmental compliance?**

Email productcompliance@molex.com
 For a multiple part number RoHS Certificate of Compliance, [click here](#)

Please visit the [Contact Us](#) section for any non-product compliance questions.

Search Parts in this Series

[43374Series](#)

Mates With

[43178 Male Crimp Terminals](#)

Use With

[44441 Receptacle Housings](#)

Application Tooling | FAQ

Tooling specifications and manuals are found by selecting the products below. Crimp Height Specifications are then contained in the Application Tooling Specification document.

Global

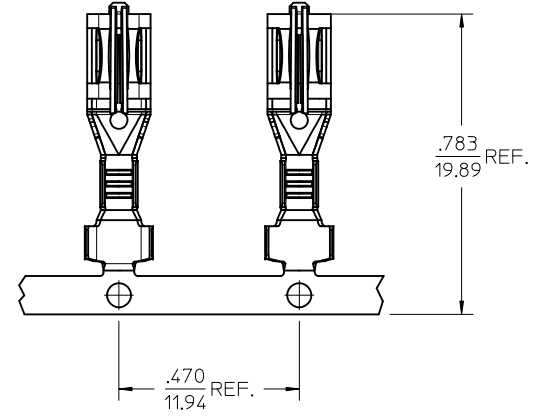
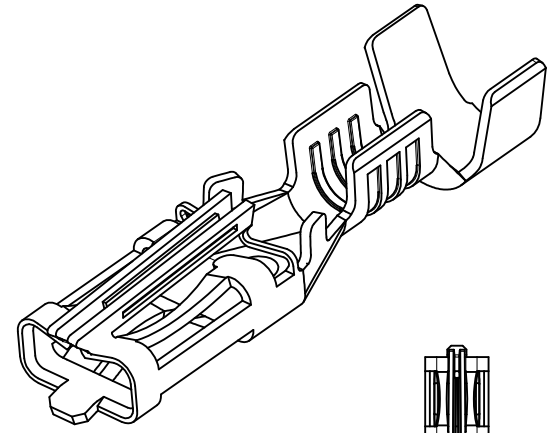
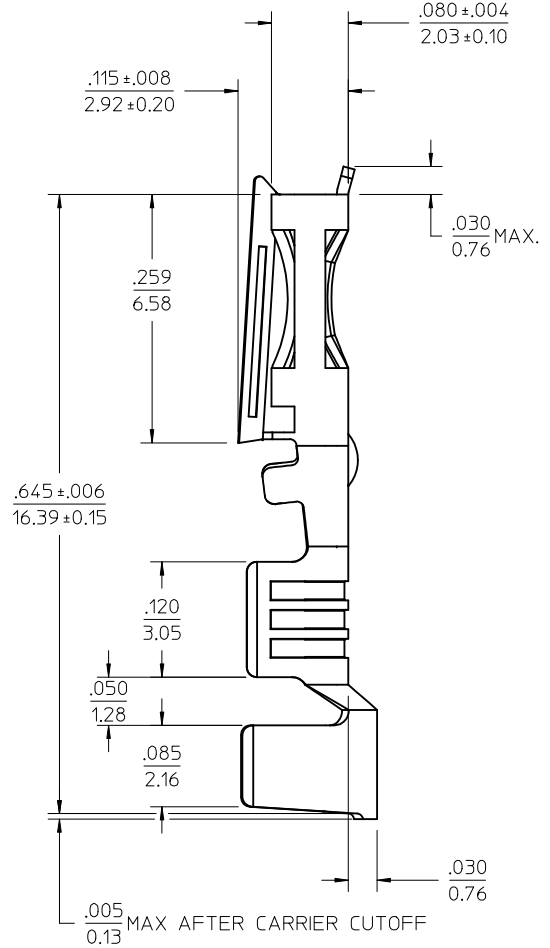
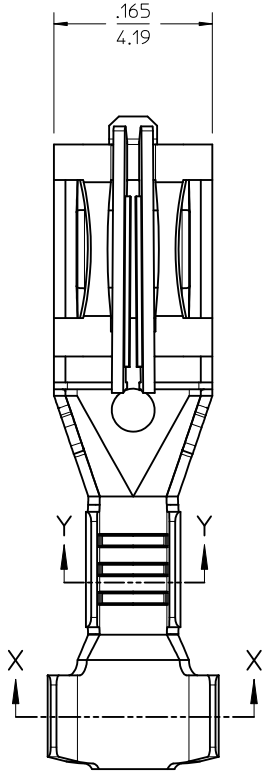
Description	Product #
-------------	-----------

FineAdjust™	0639012500
Applicator for Sabre™ Flat Blade Crimp Terminal, 18-20 AWG, UL 1007 wires	

FineAdjust™ Applicator for Sabre™ Flat Blade Crimp Terminal, 18-20 AWG, UL 1015 wires	<u>0639012600</u>
T2 Terminator for Sabre™ Flat Blade Crimp Terminals, 18-20 AWG, UL1007 wires	<u>0639112500</u>
T2 Terminator for Sabre™ Flat Blade Crimp Terminals, 18-20 AWG, UL1015 wires	<u>0639112600</u>

This document was generated on 05/19/2010

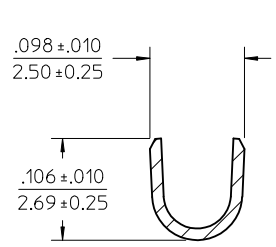
PLEASE CHECK WWW.MOLEX.COM FOR LATEST PART INFORMATION



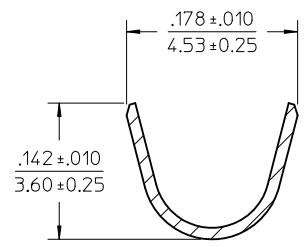
CARRIER STRIP PROGRESSION

NOTES:

1. MATERIAL: C26000 BRASS.
2. FINISH: 20 MICRINCH (0.5 MICROMETER) MINIMUM HOT TIN DIP OVERALL.
3. PRODUCT SPECIFICATION: PS-44441-001.
4. PACKAGING: TERMINALS WOUND ON 24" REELS WITH PAPER INTERLEAF.
5. THIS TERMINAL FOR USE WITH 18-20 AWG STRANDED WIRE, UL 1007 OR UL 1015 STYLES, .071-.112 INSULATION DIAMETER. FOR FURTHER INFORMATION REFER TO MOLEX APPLICATION TOOLING SPECIFICATION.
6. TERMINAL MATES TO .125/(3.18 WIDE X .020/(0.51) THICK FLAT BLADE TERMINALS OR MOLEX 43178 SERIES CRIMP TERMINALS.



SECTION Y-Y
CONDUCTOR CRIMP



SECTION X-X
INSULATION CRIMP

UPDATE CAR. PROG. EC NO: UCP2010-1804 DRAWN: BWIRKUS 2010/02/11 CHKD: 2010/02/11 APPR: BWIRKUS 2010/02/15	REVISION A1	DESCRIPTION	QUALITY SYMBOLS ▽=0 ▽=0
---	----------------	-------------	-------------------------------

GENERAL TOLERANCES (UNLESS SPECIFIED)	DIMENSION STYLE IN/MM	SCALE 10:1	DESIGN UNITS INCH	THIRD ANGLE PROJECTION
4 PLACES ± --- ± ---	mm	DRAWN BY BWIRKUS	DATE 09-09-2009	TITLE SABRE 18-20AWG CRIMP FEM W/O TPA; .125 WIDE TAB; UL1007 OR 1015 WIRE
3 PLACES ± --- ± .005	INCH	CHECKED BY BWIRKUS	DATE 09-09-2009	MATERIAL NO. 433742001
2 PLACES ± 0.13 ± .010		APPROVED BY APATEL	DATE 09-09-2009	DOCUMENT NO. SD-43374-301
1 PLACE ± 0.25 ± ---		SHEET NO. 1 OF 1		
ANGULAR ± ---°	DRAFT WHERE APPLICABLE MUST REMAIN WITHIN DIMENSIONS			

MATERIAL NO. 433742001				SHEET NO. 1 OF 1	
THIS DRAWING CONTAINS INFORMATION THAT IS PROPRIETARY TO MOLEX INCORPORATED AND SHOULD NOT BE USED WITHOUT WRITTEN PERMISSION					