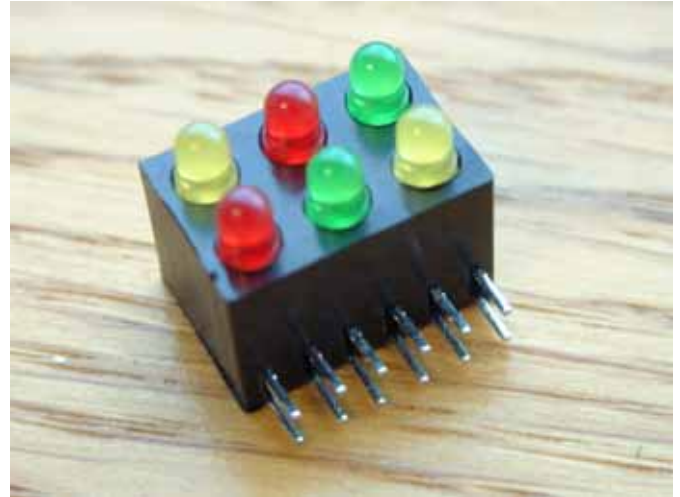


BOT123Series

3 Way 2 Tier 3mm LED Array

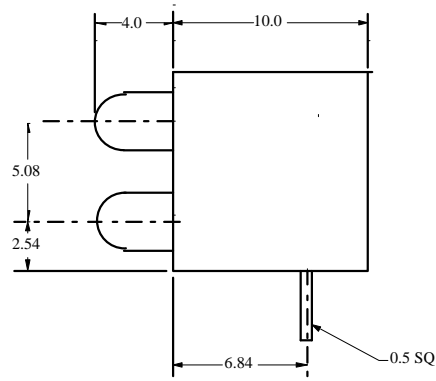
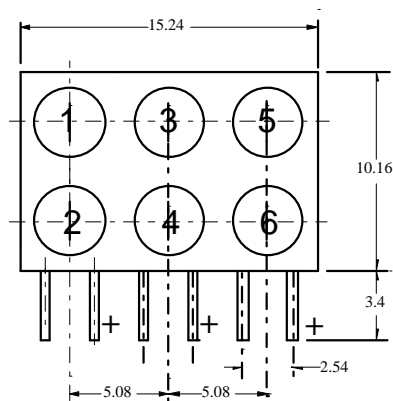
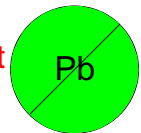
The BOT123 series is a family of devices using Black NYLON 6 VO rated housing to mount 3mm LEDs at right angles to the PCB forming an 3x2 LED Array.

- +/- 25 Deg Viewing Angle
- Good matching
- Direct equivalent to Marl 123 series.
- End stackable.
- Wide range of LED types available



MECHANICAL DATA

This component is RoHS compliant



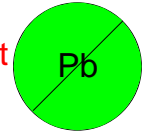
BEDFORD OPTO TECHNOLOGY LTD
1,BIGGAR BUSINESS PARK, BIGGAR,LANARKSHIRE ML12 6FX
Tel: +44 (0) 1899 221221 Fax: +44 (0) 1899 221009
Website: bot.co.uk E-mail: bill@bot.co.uk

BOT123 Series

ABSOLUTE MAXIMUM RATINGS (T_A = 25°C)

REVERSE VOLTAGE	6 Volts
CONTINUOUS FORWARD CURRENT	30 mA
POWER DISSIPATION	100 mW
OPERATING TEMP	-40 TO+100°C
STORAGE TEMP	-55to +100°C
LEAD SOLDERING TEMP(2mm FROM BODY 5secs)	260°C

This component is RoHS compliant



OPTO ELECTRONIC DATA (T_a = 25°C)

COLOUR		Luminous Intensity If = 10mA mcd	Peak Wavelength nm	Forward Voltage If = 20mA volts	VIEWING ANGLE deg
HE RED	min	6.3	-	-	30
	typ	-	635	2.0	
	max	-	-	3.0	
YELLOW	min	6.3	-	-	30
	typ		585	2.4	
GREEN	min	6.3	-	-	30
	typ		565	2.4	
	max		-	3.0	
PURE GREEN	Min	1.6	555	2.4	30
	Typ			3.0	
	max				
SOFT ORANGE	Min	1.6	605	2.4	30
	Typ			3.0	
	max				

ORDERING INFORMATION

POSITION	1	2	3	4	5	6
BOT123	X	X	X	X	X	X

X=R=RED,G=GREEN,Y=YELLOW,PG=PURE GREEN,O=SOFT ORANGE

BEDFORD OPTO TECHNOLOGY LTD
1,BIGGAR BUSINESS PARK, BIGGAR,LANARKSHIRE ML12 6FX
Tel: +44 (0) 1899 221221 Fax: +44 (0) 1899 221009
Website: bot.co.uk E-mail: bill@bot.co.uk