

PLEASE CHECK WWW.MOLEX.COM FOR LATEST PART INFORMATION

Part Number: [0908140310](#)
Status: **Active**
Overview: [picoflex](#)
Description: 1.27mm (.050") Pitch Picoflex® PF-50 Header, Vertical, Low Profile, Surface Mount, Tin, 10 Circuits, Glow Wire Compatible

Documents:

[3D Model](#) [Product Specification PS-99020-0011 \(PDF\)](#)
[Drawing \(PDF\)](#) [RoHS Certificate of Compliance \(PDF\)](#)

Agency Certification

UL E29179

General

Product Family PCB Headers
 Series [90814](#)
 Application Wire-to-Board
 Application Tooling Part Link 690081070
 Comments Low Profile SMT
 Overview [picoflex](#)
 Product Name Picoflex®

Physical

Breakaway No
 Circuits (Loaded) 10
 Color - Resin Natural
 Durability (mating cycles max) 30
 First Mate / Last Break No
 Flammability 94V-0
 Glow-Wire Compliant Yes
 Guide to Mating Part No
 Keying to Mating Part None
 Lock to Mating Part Yes
 Material - Metal Brass
 Material - Plating Mating Tin
 Material - Resin High Temperature Thermoplastic
 Number of Rows 1
 Orientation Vertical
 PCB Locator Yes
 PCB Retention None
 PCB Thickness Recommended (in) 0.062 In
 PCB Thickness Recommended (mm) 1.60 mm
 Packaging Type Tube
 Pitch - Mating Interface (in) 0.050 In
 Pitch - Mating Interface (mm) 1.27 mm
 Pitch - Term. Interface (in) 0.050 In
 Pitch - Term. Interface (mm) 1.27 mm
 Plating min: Mating (µin) 120
 Plating min: Mating (µm) 3
 Plating min: Termination (µin) 120
 Plating min: Termination (µm) 3
 Polarized to Mating Part Yes
 Polarized to PCB Yes
 Shrouded No
 Stackable No
 Surface Mount Compatible (SMC) N/A



Series

image - Reference only

EU RoHS

ELV and RoHS Compliant
REACH SVHC
 Not Reviewed
Halogen-Free Status
Not Reviewed

China RoHS



Need more information on product environmental compliance?

Email productcompliance@molex.com
 For a multiple part number RoHS Certificate of Compliance, [click here](#)

Please visit the [Contact Us](#) section for any non-product compliance questions.

Search Parts in this Series

[90814Series](#)

Mates With

[90327 IDT Connector](#)

Application Tooling | FAQ

Tooling specifications and manuals are found by selecting the products below. Crimp Height Specifications are then contained in the Application Tooling Specification document.

Global

| Description | Product # |
|---|----------------------------|
| Extraction Tool (Plastic) for 90327 Connector, 4-26 Circuit | 0690081070 |

Temperature Range - Operating -40°C to +105°C
Termination Interface: Style Surface Mount

Electrical

Current - Maximum per Contact 2.4A
Voltage - Maximum 250V

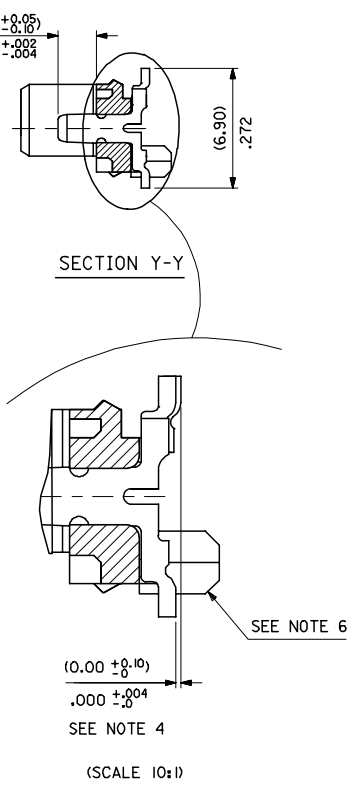
Material Info

Reference - Drawing Numbers

Packaging Specification PK-90814-001
Product Specification PS-99020-0011
Sales Drawing SDA-90814

This document was generated on 05/26/2010

PLEASE CHECK WWW.MOLEX.COM FOR LATEST PART INFORMATION



CIRCUIT SIZE

| | PCB PEGS | TUBE PACKED | TAPE & REEL PACKED | POLARIZING PEG HEIGHT DIM. E |
|---|----------|-------------|--------------------|------------------------------|
| 0 | YES | YES | NO | (6.40)/ .252 |
| 2 | YES | NO | YES | (6.40)/ .252 |
| 3 | NO | YES | NO | (6.40)/ .252 |
| 5 | NO | NO | YES | (6.40)/ .252 |
| 6 | NO | YES | NO | (4.10)/ .161 |
| 7 | NO | NO | YES | (4.10)/ .161 |
| 8 | YES | YES | NO | (4.10)/ .161 |
| 9 | YES | NO | YES | (4.10)/ .161 |

0= (3-5UM)/120-200UM TIN VERSION
 3= (0.76UM)/30UM GOLD VERSION

| 90814-34 | 34 | (46.96)/1.849 | (41.91)/1.650 | (45.76)/1.802 | 10 | NO |
|----------|----------------|---------------|---------------|---------------|--|--------|
| 90814-26 | 26 | (36.80)/1.449 | (31.75)/1.250 | (35.60)/1.402 | 14 | YES |
| 90814-24 | 24 | (34.26)/1.349 | (29.21)/1.150 | (33.06)/1.302 | 15 | YES |
| 90814-22 | 22 | (31.72)/1.249 | (26.67)/1.050 | (30.52)/1.202 | 16 | YES |
| 90814-20 | 20 | (29.18)/1.149 | (24.13)/.950 | (27.98)/1.102 | 18 | YES |
| 90814-18 | 18 | (26.64)/1.049 | (21.59)/.850 | (25.44)/1.002 | 20 | YES |
| 90814-16 | 16 | (24.10)/.949 | (19.05)/.750 | (22.90)/.902 | 22 | YES |
| 90814-14 | 14 | (21.56)/.849 | (16.51)/.650 | (20.36)/.802 | 25 | YES |
| 90814-12 | 12 | (19.02)/.749 | (13.97)/.550 | (17.82)/.702 | 28 | YES |
| 90814-10 | 10 | (16.48)/.649 | (11.43)/.450 | (15.28)/.602 | 32 | YES |
| 90814-08 | 8 | (13.94)/.549 | (8.89)/.350 | (12.74)/.502 | 38 | YES |
| 90814-06 | 6 | (11.40)/.449 | (6.35)/.250 | (10.20)/.402 | 46 | YES |
| 90814-04 | 4 | (8.86)/.349 | (3.81)/.150 | (7.66)/.302 | 60 | YES |
| PART NO. | NUMBER OF CKTS | DIMN. A | DIMN. B | DIMN. C | QUANTITY OF PARTS PER TUBE (-0**/-*3**/-*6** & -*8** VERSIONS) | TOOLED |

- NOTES:
- MATERIAL: HOUSING: NYLON 4/6 30% G.F., UL 94 V-0, NATURAL (BEIGE)
 TERMINAL- CARTRIDGE BRASS (0.28)/0.11 REF THICK
 - PLATING:
 TIN: TIN (3-5UM)/120um-200um OVER (1.27um)/51um MIN NICKEL.
 GOLD: (0.76UM)/30UM SELECTIVE GOLD AND (0.10-0.20UM)/4UM-8UM GOLD FLASH OVER (1.27UM)/50UM NICKEL UNDERCOAT
 - MATES WITH MOLEX 90327 PART SERIES
 - ALL SMT TAILS TO LIE WITHIN A COPLANARITY BAND OF (0.0)/.0 - (0.10)/.004 REF. FROM EACH OTHER.
 - FOR TAPE & REEL PACKAGING DETAILS SEE SDA-90814-9001
 - PCB PEGS ARE OPTIONAL
 - PCB LAYOUT SHOWN ON SHEET 2

REDUCED CO-PL TOL
 EC NO: E2007-0304
 DRAWN: IDEENEHY 2006/11/07
 CHKD: DMORLARTY 2006/11/07
 APPR: IDEENEHY 2006/11/13

QUALITY SYMBOLS
 ▽=0
 ▽=0

GENERAL TOLERANCES (UNLESS SPECIFIED)

| | mm | INCH |
|----------|-------|-------|
| 4 PLACES | ±--- | ±--- |
| 3 PLACES | ±--- | ±.004 |
| 2 PLACES | ±0.10 | ±--- |
| 1 PLACE | ±--- | ±--- |

 ANGULAR ±1/2°

DIMENSION STYLE: MM/IN
 SCALE: 5:1
 DESIGN UNITS: METRIC
 THIRD ANGLE PROJECTION

DRAWN BY: DMCNAMAR DATE: 2001/08/16
 CHECKED BY: PCURTIN DATE: 2001/08/16
 APPROVED BY: MWILHITE DATE: 2001/08/16

MATERIAL NO.:
 DOCUMENT NO.: SDA-90814
 SHEET NO.: 1 OF 2

DRAFT WHERE APPLICABLE MUST REMAIN WITHIN DIMENSIONS
 SEE CHART
 THIS DRAWING CONTAINS INFORMATION THAT IS PROPRIETARY TO MOLEX INCORPORATED AND SHOULD NOT BE USED WITHOUT WRITTEN PERMISSION

PICOFLEX SMT HEADER
 MOLEX INCORPORATED



PCB LAYOUT FOR TRANSITION FIT WITH PCB PEGS
 HEADER VERSIONS 90814-0**/-*2**/-*8**/-*9**,
 VIEWED FROM COMPONENT SIDE



PCB LAYOUT FOR CLEARANCE FIT WITH PCB PEGS
 HEADER VERSIONS 90814-0**/-*2**/-*8**/-*9**,
 VIEWED FROM COMPONENT SIDE



PCB THICKNESS = (1.60±0.14) .063±.006

PCB LAYOUT FOR HEADERS WITHOUT PCB PEGS
 HEADER VERSIONS 90814-3**/-*5**/-*6**/-*7**,
 VIEWED FROM COMPONENT SIDE

| | | | | | |
|------------|----------------|---------------|---------------|---------------|--------------|
| 90814-0034 | 34 | (46.96)/1.849 | (41.91)/1.650 | (45.76)/1.802 | (22.88)/.901 |
| 90814-0026 | 26 | (36.80)/1.449 | (31.75)/1.250 | (35.60)/1.402 | (17.80)/.701 |
| 90814-0024 | 24 | (34.26)/1.349 | (29.21)/1.150 | (33.06)/1.302 | (16.53)/.651 |
| 90814-0022 | 22 | (31.72)/1.249 | (26.67)/1.050 | (30.52)/1.202 | (15.26)/.601 |
| 90814-0020 | 20 | (29.18)/1.149 | (24.13)/.950 | (27.98)/1.102 | (13.99)/.551 |
| 90814-0018 | 18 | (26.64)/1.049 | (21.59)/.850 | (25.44)/1.002 | (12.72)/.501 |
| 90814-0016 | 16 | (24.10)/.949 | (19.05)/.750 | (22.90)/.902 | (11.45)/.451 |
| 90814-0014 | 14 | (21.56)/.849 | (16.51)/.650 | (20.36)/.802 | (10.18)/.401 |
| 90814-0012 | 12 | (19.02)/.749 | (13.97)/.550 | (17.82)/.702 | (8.91)/.351 |
| 90814-0010 | 10 | (16.48)/.649 | (11.43)/.450 | (15.28)/.602 | (7.64)/.301 |
| 90814-0008 | 8 | (13.94)/.549 | (8.89)/.350 | (12.74)/.502 | (6.37)/.251 |
| 90814-0006 | 6 | (11.40)/.449 | (6.35)/.250 | (10.20)/.402 | (5.10)/.201 |
| 90814-0004 | 4 | (8.86)/.349 | (3.81)/.150 | (7.66)/.302 | (3.83)/.151 |
| PART NO. | NUMBER OF CKTS | DIMN. A | DIMN. B | DIMN. C | DIMN. D |

| | | | | | | |
|--|--|---------------------------------------|----------------------------|---|------------------------------|------------------------|
| ADDED PART FOOTPRINT EC NO: E2009-0235 DRAWN:BYRNES 2008/11/07 CHKD: 2008/11/10 APPR: WALLACE 2008/11/10 | QUALITY SYMBOLS ▽=0 ▽=0 | GENERAL TOLERANCES (UNLESS SPECIFIED) | DIMENSION STYLE MM ONLY | SCALE 5:1 | DESIGN UNITS METRIC | THIRD ANGLE PROJECTION |
| | 4 PLACES ± --- ± --- 3 PLACES ± --- ± --- 2 PLACES ± 0.10 ± --- 1 PLACE ± 0.2 ± --- ANGULAR ± 1/2° | mm INCH | DRAWN BY DMCNAMAR | DATE 2001/08/23 | TITLE PICOFLEX SMT HEADER | MOLEX INCORPORATED |
| DRAFT WHERE APPLICABLE MUST REMAIN WITHIN DIMENSIONS | | APPROVED BY MWILHITE | DATE 2001/08/23 | DOCUMENT NO. SDA-90814 | SHEET NO. 2 OF 2 | |
| | | | SIZE A2 | THIS DRAWING CONTAINS INFORMATION THAT IS PROPRIETARY TO MOLEX INCORPORATED AND SHOULD NOT BE USED WITHOUT WRITTEN PERMISSION | | |