

**PLEASE CHECK WWW.MOLEX.COM FOR LATEST PART INFORMATION**

**Part Number:** [0357160190](#)  
**Status:** **Active**  
**Description:** 2.36mm (.093") Diameter Pin Wire-to-Board Terminal, Female, Brass, Wire Range 20-24 AWG (0.52-0.20mm<sup>2</sup>), Pre-Ni Plated

**Documents:**

[Drawing \(PDF\)](#) [RoHS Certificate of Compliance \(PDF\)](#)  
[Product Specification PS-35106-001 \(PDF\)](#)

**General**

|                         |                       |
|-------------------------|-----------------------|
| Product Family          | Crimp Terminals       |
| Series                  | <a href="#">35716</a> |
| Crimp Quality Equipment | Yes                   |
| Product Name            | N/A                   |

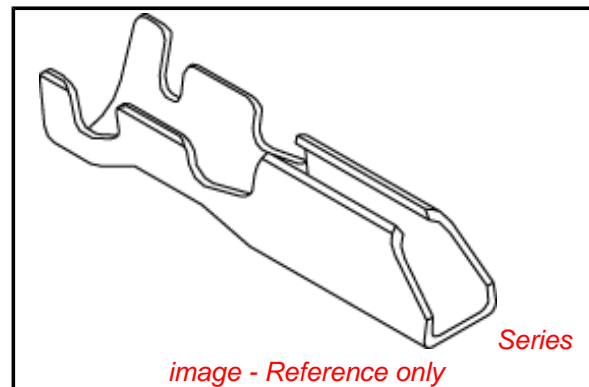
**Physical**

|                              |                      |
|------------------------------|----------------------|
| Gender                       | Female               |
| Material - Metal             | Brass                |
| Material - Plating Mating    | Nickel               |
| Packaging Type               | Reel                 |
| Plating min: Mating (µin)    | 39                   |
| Plating min: Mating (µm)     | 1                    |
| Termination Interface: Style | Crimp or Compression |
| Wire Insulation Diameter     | 2.70mm (.106") max.  |
| Wire Size AWG                | 20, 22, 24           |
| Wire Size mm <sup>2</sup>    | N/A                  |

**Material Info**

**Reference - Drawing Numbers**

|                       |              |
|-----------------------|--------------|
| Product Specification | PS-35106-001 |
| Sales Drawing         | SD-35716-001 |



**EU RoHS**

**ELV and RoHS Compliant**  
**REACH SVHC Contains SVHC: No**  
**Halogen-Free Status**

**China RoHS**



**Need more information on product environmental compliance?**

Email [productcompliance@molex.com](mailto:productcompliance@molex.com)  
 For a multiple part number RoHS Certificate of Compliance, [click here](#)

Please visit the [Contact Us](#) section for any non-product compliance questions.

**Search Parts in this Series**  
[35716Series](#)

**Use With**  
[35183](#)

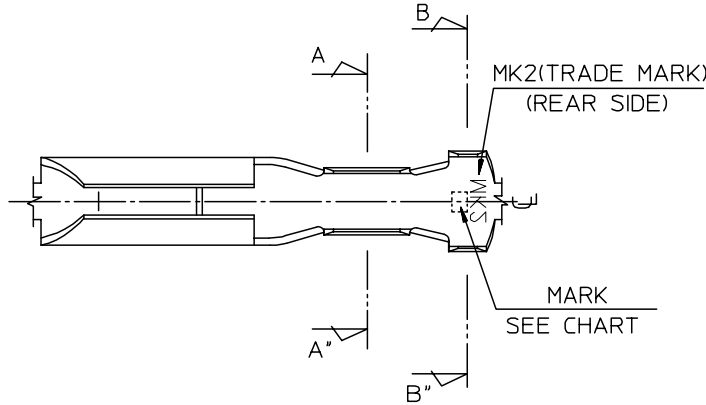
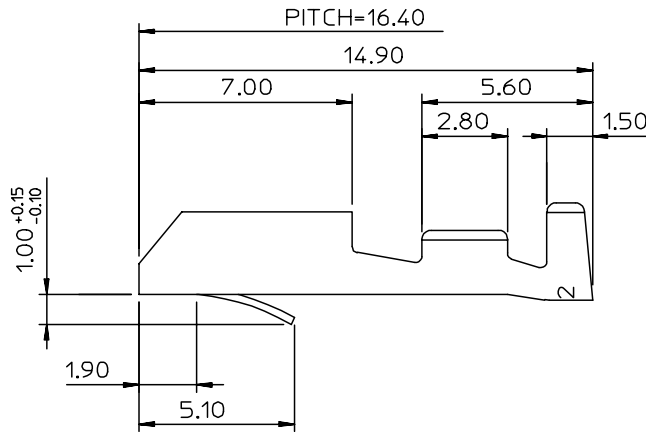
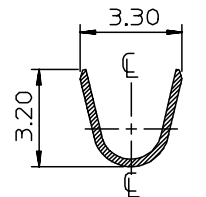
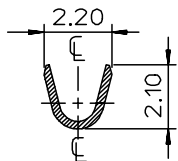
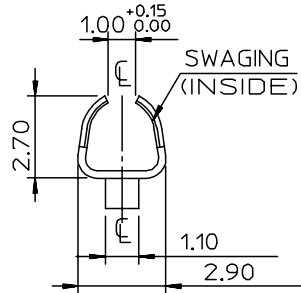
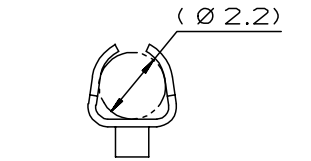
DWG. NO.  
SD-35716-001

SIMILAR ITEM

PROJECT NO.

B

DO NOT SCALE DRAWING  
DIMENSION IN METRIC



NOTES

1. MATERIAL & PLATING: SEE CHART
2. MATING PIN : 2.36 DIA. ROUND PIN
3. APPLICABLE WIRE RANGE: AWG #24-#20  
INSULATION DIAMETER: 1.5-2.7mm
4. RECOMMENDED LENGTH OF WIRE STRIP IS 3.7-4.5mm.

| CHART      | ENG.NO.    | ENG.NO.   | MATERIAL    | PLATING                             | MARK                               |
|------------|------------|-----------|-------------|-------------------------------------|------------------------------------|
|            | 35716-0110 | 357160110 | BRASS       | PRE-TIN                             | I : (1UP LINE)                     |
|            | 35716-0111 | 357160111 | PHOS.BRONZE | PRE-TIN                             | II : (2UP LINE)                    |
|            | 35716-0190 | 357160190 | BRASS       | PRE-Ni                              | N1 : (1UP LINE)<br>N2 : (2UP LINE) |
| 35716-0193 | 357160193  | BRASS     | PRE-Ni      | SI : (1UP LINE)<br>SII : (2UP LINE) |                                    |

|  |             |  |   |                             |  |                           |  |                   |  |                    |                                      |  |
|--|-------------|--|---|-----------------------------|--|---------------------------|--|-------------------|--|--------------------|--------------------------------------|--|
| REVISED<br>ECN NO. KOR2004-0068<br>DRWN: C.B.CHIN 03/11/13<br>CHK: W.Y.YANG<br>APPR: C.W.LEE                                   | DESCRIPTION | QUALITY SYMBOLS                                      | GENERAL TOLERANCES:<br>(UNLESS SPECIFIED) |                             | SCALE                                  | DESIGN UNITS              | THIRD ANGLE PROJECTION                 | DIMENSIONS:       |  | SHT                | REV                                  |  |
|  |             | MAJOR<br>▼ = 0                                       | mm  | INCH                        | □ mm                                   | □ INCH                    | □ mm                                   | □ INCH            | mm ONLY                                    |                    |                                      |  |
|  |             | CRITICAL<br>▽ C = 0                                  | 4 PLACES ±0.                              | ±-                          | 3 PLACES ±0.                           | ±-                        | 2 PLACES ±0.30                         | ±-                | 1 PLACE ±0.30                              | ±-                 | DRAWN BY & DATE<br>W.Y.YANG 91/10/14 |  |
|  |             |  | ANGULAR: ± °                              |                             | CHECKED BY & DATE<br>B.K.CHOI 91/10/14 |                           | APPROVED BY & DATE<br>C.W.LEE 91/10/14 |                   | TITLE:<br>2.36 DIA PIN RECEPTACLE TERMINAL |                    |                                      |  |
| G  | REV         | DRAFT WHERE APPLICABLE MUST REMAIN WITHIN DIMENSIONS |   | CAD FILENAME<br>S7160110.MI |  | MATERIAL NO.<br>SEE CHART | DRAWING NO.<br>SD-35716-001            | SHEET NO.<br>10F1 |  | MOLEX INCORPORATED |                                      |  |
| THIS DRAWING CONTAINS INFORMATION THAT IS PROPRIETARY TO MOLEX INCORPORATED AND SHOULD NOT BE USED WITHOUT WRITTEN PERMISSION. |             |  |   |                             |  |                           |  |                   |  | SIZE<br>B          |                                      |  |