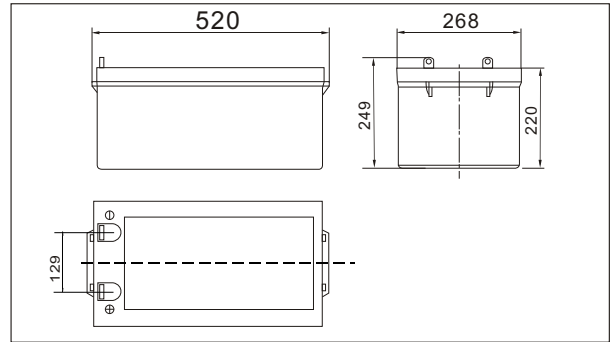




SW122300E(12V230AH)



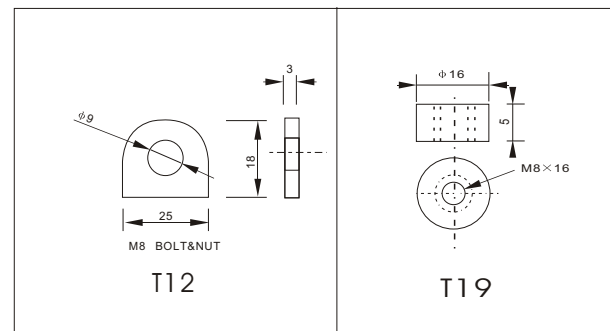
Outer dimensions (mm)



Specifications

Nominal Voltage		12V
Rated capacity (10 hour rate)		230 Ah
Dimensions	Total Height	249 mm (9.80inches)
	Height	220 mm (8.66 inches)
	Length	520 mm (20.5 inches)
	Width	268 mm (10.55 inches)
Weight Approx		72.5 Kg (159.5 lbs)

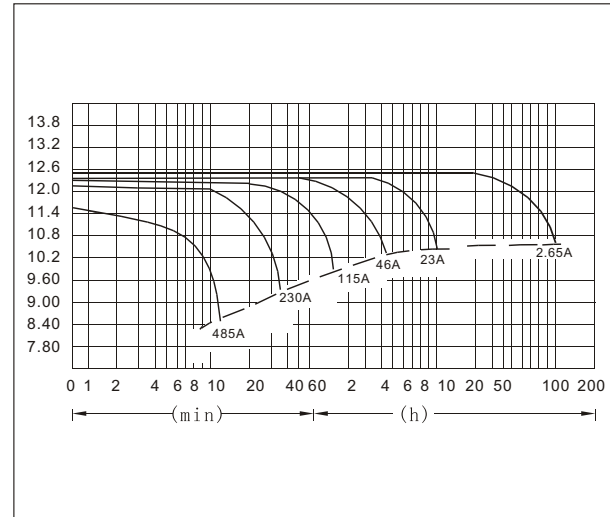
Terminal Type (mm)



Characteristics

Capacity 25°C(77°F)	10 hour rate(23.0 A)	230 AH
	5 hour rate(36.8 A)	184AH
	1 hour rate(126.5 A)	126.5 AH
1.5 hour discharge to 10.5V		92 A
Internal Resistance	Full charged Battery at 25°C(77°F)	3.5 mΩ
Capacity affected by Temperature (10hour rate)	40°C(104°F)	102%
	25°C(77°F)	100%
	0°C(32°F)	85%
	-15°C(5°F)	65%
Self-Discharge at 25°C(77°F)	Capacity after 3 month storage	91%
	Capacity after 6 month storage	82%
	Capacity after 12 month storage	64%
Terminal		T12、T19
Charge (constant Voltage)	Cycle	Initial Charging Current less than 57.5 A Voltage 14.10-14.40V
	Float	Voltage 13.50-13.80V

Discharge Curves 25°C(77°F)



Constant Current(Amp) and Constant Power(Watt) Discharge Table at 25°C(77°F)

Time		10min	30min	1h	3h	4h	5h	8h	10h	20h	50h	100h
9.60V	A	485	262	138	59.1	46.0	38.0	26.7	24.2	13.04	5.43	2.78
	W	5389	2809	1598	684	533	439	310	280	151.0	64.6	33.1
10.20V	A	472	255	129.7	57.5	44.9	37.3	26.2	23.6	12.72	5.24	2.71
	W	5183	2783	1502	666	519	431	303	273	147.3	62.3	32.2
10.50V	A	451	243	126	56.1	44.2	36.8	26.0	23.0	12.56	5.15	2.65
	W	5023	2627	1454	650	511	426	301	270	145.4	61.4	31.5
10.80V	A	421	235	121	54.7	43.5	35.9	25.3	22.4	12.42	5.06	2.62
	W	4828	2528	1391	637	501	418	294	268	144.6	60.3	31.3
11.10V	A	386	216	114	52.9	42.2	35.0	24.6	21.85	11.80	4.97	2.53
	W	4745	2507	1354	630	498	416	293	260	140.4	59.1	30.1