

**PLEASE CHECK WWW.MOLEX.COM FOR LATEST PART INFORMATION**

**Part Number:** [0026116155](#)  
**Status:** **Active**  
**Overview:** [kk](#)  
**Description:** 3.96mm (.156") Pitch KK® PC Board Connector, Bottom Entry, Nylon Connector, 1.0µm (40µ") Tin (Sn), 15 Circuits

**Documents:**

[3D Model](#) [Product Specification PS-99020-0087 \(PDF\)](#)  
[Drawing \(PDF\)](#) [RoHS Certificate of Compliance \(PDF\)](#)

**General**

Product Family PCB Receptacles  
 Series [3215](#)  
 Application Board-to-Board  
 Overview [kk](#)  
 Product Name KK®

**Physical**

Circuits (Loaded) 15  
 Color - Resin Natural  
 Glow-Wire Compliant No  
 Keying to Mating Part Yes  
 Lock to Mating Part Yes  
 Material - Metal Phosphor Bronze  
 Material - Plating Mating Tin  
 Material - Plating Termination Tin  
 Material - Resin Nylon  
 Number of Rows 1  
 Orientation Bottom Entry  
 PC Tail Length (in) 0.160 In  
 PC Tail Length (mm) 4.06 mm  
 PCB Locator No  
 PCB Retention None  
 PCB Thickness Recommended (in) 0.062 In  
 PCB Thickness Recommended (mm) 1.60 mm  
 Packaging Type Bag  
 Pitch - Mating Interface (in) 0.156 In  
 Pitch - Mating Interface (mm) 3.96 mm  
 Plating min: Mating (µin) 15  
 Plating min: Mating (µm) 0.375  
 Plating min: Termination (µin) 40.00  
 Plating min: Termination (µm) 1.00  
 Polarized to PCB No  
 Temperature Range - Operating 0°C to +75°C  
 Termination Interface: Style Through Hole

**Electrical**

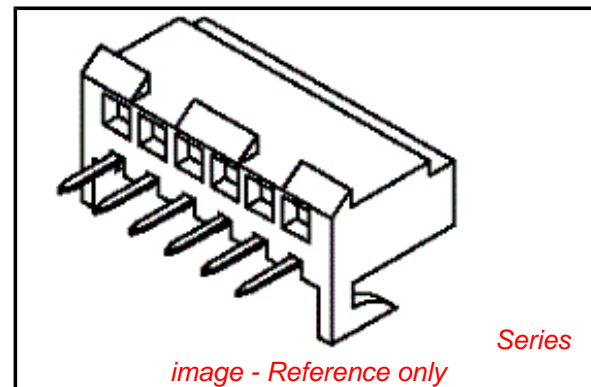
Current - Maximum per Contact 5A  
 Voltage - Maximum 250V

**Material Info**

Old Part Number 3215HR15BB

**Reference - Drawing Numbers**

Product Specification PS-99020-0087  
 Sales Drawing SDAE-3215-\*\*N\*\*-\*\*



**EU RoHS**

**ELV and RoHS  
Compliant**  
**REACH SVHC**  
 Not Reviewed  
**Halogen-Free  
Status**

**China RoHS**



**Not Reviewed**  
**Need more information on product  
environmental compliance?**

Email [productcompliance@molex.com](mailto:productcompliance@molex.com)  
 For a multiple part number RoHS Certificate of Compliance, [click here](#)

Please visit the [Contact Us](#) section for any non-product compliance questions.

**Search Parts in this Series**

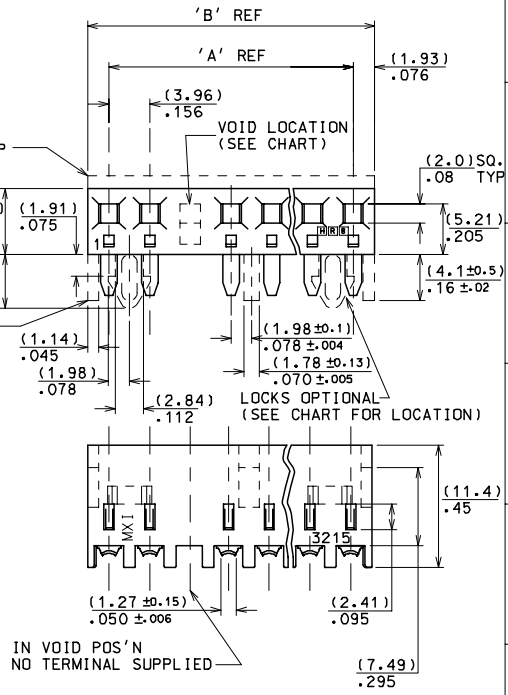
[3215Series](#)

This document was generated on 06/08/2010

**PLEASE CHECK [WWW.MOLEX.COM](http://WWW.MOLEX.COM) FOR LATEST PART INFORMATION**

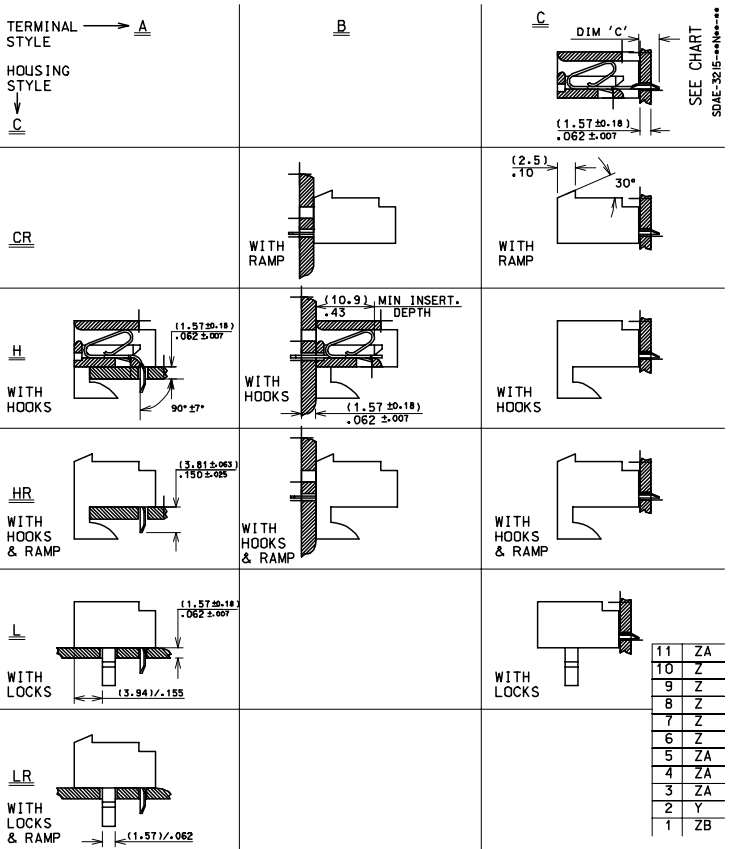
20	(75.29±0.41)	(79.15±0.51)
	2.964±.016	3.116±.020
19	(71.32±0.41)	(75.18±0.51)
	2.808±.016	2.960±.020
18	(67.36±0.36)	(71.22±0.46)
	2.652±.014	2.804±.018
17	(63.40±0.36)	(67.26±0.46)
	2.496±.014	2.648±.018
16	(59.44±0.36)	(63.29±0.46)
	2.340±.014	2.492±.018
15	(55.47±0.33)	(59.33±0.41)
	2.184±.012	2.336±.016
14	(51.51±0.33)	(55.37±0.41)
	2.028±.012	2.180±.016
13	(47.55±0.30)	(51.41±0.41)
	1.872±.012	2.024±.016
12	(43.59±0.25)	(47.45±0.36)
	1.716±.010	1.868±.014
11	(39.62±0.25)	(43.48±0.36)
	1.560±.010	1.712±.014
10	(35.66±0.25)	(39.52±0.31)
	1.404±.010	1.556±.012
9	(31.70±0.18)	(35.56±0.3)
	1.248±.007	1.400±.012
8	(27.74±0.18)	(31.60±0.31)
	1.092±.007	1.244±.012
7	(23.77±0.18)	(27.64±0.3)
	.936±.007	1.088±.012
6	(19.81±0.13)	(23.67±0.25)
	.780±.005	.932±.011
5	(15.85±0.13)	(19.71±0.25)
	.624±.005	.776±.010
4	(11.89±0.13)	(15.75±0.25)
	.468±.005	.620±.010
3	(7.92±0.13)	(11.79±0.25)
	.312±.005	.464±.010

No OF  
CCTS



IN VOID POS'N  
NO TERMINAL SUPPLIED

- NOTES:
1. THESE ASSEMBLIES STACKABLE END TO END ON (3.96)/.156 CENTRE TO CENTRE PROGRESSION.
  2. FOR CHARTS & PANEL DRILLING DETAILS SEE SHEET 2 AND SUBSEQUENT SHEETS.
  3. TERMINAL PULL OUT FORCE- 4lbs MIN.
  4. TERMINALS ARE LUBRICATED WITH MXI-3.
  5. CONNECTORS FOR USE WITH (1.14)/.045 SQ. OR RD. PINS
  6. THIS PART CONFORMS TO PROD.SPEC.99020-0087



REVISION #P-DATE  
E2004-0792  
P-SHEAHAN 04/03/98

4 : 1 x  
G. HART 24/11/82  
M GOONEY 26/11/98  
MWILHITE 26/11/98

25  
010  
014  
36  
1/2

CONNECTOR, K-K (3.96)/.156 WITH OR WITHOUT LOCKING WITH P.C. TAIL TERMINALS

SE32151 .DGN SEE CHART SDAE-3215-\*\*\*N\*\*\* I 0F 11

ZB

SEE CHART  
SDAE-3215-\*\*\*N\*\*\* I

SHT. 1 OF 1		MRI-SDAE-3215-***N***			
<b>MODIFICATION RECORD INDEX</b>					
ECN	ISS.	DATE	INIT.	SHTS. AFFECTED	DESCRIPTION OF MOD.
MESL-077	F	2 .12.82	GH	ALL	REDRAW
MEML-112	G	26.4 .83	GH	ALL	REVISION
MEML-594	H	6 .6 .83	GH	ALL	VARIOUS
MEML-608	J	21.6 .83	GH	ALL	VARIOUS
MEML-681	K	31.8 .83	MAL	ALL	VARIOUS
MEML-901	L	25.6 .84	MC	ALL	VARIOUS
MEML-382	M	2 .10.84	MC	ALL	VARIOUS
MEML-509	N	29.5 .85	MC	ALL	VARIOUS
MEML-510	P	31.5 .85	MC	ALL	VARIOUS
MEML-1162	R	25.11.85	JP	ALL	VARIOUS
MEML-617	S	9 .1.86	MC	ALL	VARIOUS
MEML-625	T	20.1.86	MC	ALL	VARIOUS
E10010	U	11.1.91	POB	ALL	VARIOUS
E10018	V	18.1.91	POB	ALL	VARIOUS
E50203	W	08.12.94	JS	ALL	VARIOUS
E90137	Y	1.11.98	TM	ALL	REDRAWN ON CAD
E2001-0463	Z	1.11.00	MF	1,3,4,5,6,7,8,9,10,11	UPDATED BORDER
E2003-0992	ZA	03.05.29	PS	1	NEW PROD.SPEC.99020-0087 ADDED
			REVISE ONLY ON CAD SYSTEM		
MOLEX EUROPE		CROQUIS FILENAME			
THIS DRAWING CONTAINS INFORMATION THAT IS PROPRIETARY TO MOLEX INC. A SHOULD NOT BE USED WITHOUT WRITTEN PERMISSION		NF0028		SE32151 . DGN	
				ISSUE ZA	

13		12			11		10			9		8			7		6			5			4		3		2		1	
PART No.	ENG No.	No. OF CCTS	LOCK RAMP	VOID CCT POS'N	PART No.	ENG No.	No. OF CCTS	LOCK RAMP	VOID CCT POS'N	CENTRE HOOK LOCATED BETWEEN CCT No's	PART No.	ENG No.	No. OF CCTS	LOCK RAMP	VOID CCT POS'N	CENTRE HOOK LOCATED BETWEEN CCT No's	PART No.	ENG No.	No. OF CCTS	LOCK RAMP	VOID CCT POS'N	CENTRE HOOK LOCATED BETWEEN CCT No's	PART No.	ENG No.	No. OF CCTS	LOCK RAMP	VOID CCT POS'N	CENTRE HOOK LOCATED BETWEEN CCT No's		
26-11-6038	AE-3215-CR3BB	3	YES	NONE	26-11-6039	AE-3215-H3BB	3	NO	NONE	-----	26-11-6035	AE-3215-HR3BB	3	YES	NONE	-----	26-11-2031	AE-3215-C3AC	3	NO	NONE	-----								
↑ -6048	↑ -CR4BB	4	↑	↑	↑ -6049	↑ -H4BB	4	↑	↑	-----	↑ -6045	↑ -HR4BB	4	↑	↑	-----	↑ -2041	↑ -C4AC	4	↑	↑	-----								
-6058	-CR5BB	5			-6059	-H5BB	5			-----	-6055	-HR5BB	5			-----	-2051	-C5AC	5			-----								
-6068	-CR6BB	6			-6069	-H6BB	6			-----	-6065	-HR6BB	6			-----	-2061	-C6AC	6			-----								
-6078	-CR7BB	7			-6079	-H7BB	7			-----	-6075	-HR7BB	7			-----	-2071	-C7AC	7			-----								
-6088	-CR8BB	8			-6089	-H8BB	8			4&5	-6085	-HR8BB	8			4&5	-2081	-C8AC	8			-----								
-6098	-CR9BB	9			-6099	-H9BB	9			4&5	-6095	-HR9BB	9			4&5	-2091	-C9AC	9			-----								
-6108	-CR10BB	10			-6109	-H10BB	10			5&6	-6105	-HR10BB	10			5&6	-2101	-C10AC	10			-----								
-6118	-CR11BB	11			-6119	-H11BB	11			5&6	-6115	-HR11BB	11			5&6	-2111	-C11AC	11			-----								
-6128	-CR12BB	12			-6129	-H12BB	12			4&5 8&9	-6125	-HR12BB	12			4&5 8&9	-2121	-C12AC	12			-----								
-6138	-CR13BB	13			-6139	-H13BB	13			4&5 9&10	-6135	-HR13BB	13			4&5 9&10	-2131	-C13AC	13			-----								
-6148	-CR14BB	14			-6149	-H14BB	14			5&6 9&10	-6145	-HR14BB	14			5&6 9&10	-2141	-C14AC	14			-----								
-6158	-CR15BB	15			-6159	-H15BB	15			5&6 10&11	-6155	-HR15BB	15			5&6 10&11	26-11-2151	-C15AC	15			-----								
-6168	-CR16BB	16			-6169	-H16BB	16			6&7 11&12	-6165	-HR16BB	16			6&7 11&12	NOT TOOLED	-C16AC	16			-----								
-6178	-CR17BB	17			-6179	-H17BB	17			6&7 11&12	-6175	-HR17BB	17			6&7 11&12	↑	-C17AC	17			-----								
-6188	-CR18BB	18			-6189	-H18BB	18			6&7 10&11 15&16	-6185	-HR18BB	18			6&7 10&11 15&16	↑	-C18AC	18			-----								
-6198	-CR19BB	19			-6199	-H19BB	19			5&6 10&11 15&16	-6195	-HR19BB	19			5&6 10&11 15&16	↓	-C19AC	19			-----								
26-11-6208	AE-3215-CR20BB	20	YES	NONE	26-11-6209	AE-3215-H20BB	20	NO	NONE	5&6 10&11 15&16	26-11-6205	AE-3215-HR20BB	20	YES	NONE	5&6 10&11 15&16	NOT TOOLED	AE-3215-C20AC	20	NO	NONE	-----								
											38-00-0545	AE-3215-HR17BB-51	17	YES	3,6,9 12,15	6&7 11&12						-----								
											38-00-0546	AE-3215-HR8BB-51	8	YES	3,6	4&5						-----								

SEE CHART  
SDAE-3215-\*\*\*N\*\*\*

HOUSING.  
STYLE- CR

TERMINAL.  
STYLE- B

DRILLING DETAIL 'B'  
(SEE SHEET 2)

HOUSING.  
STYLE- H

TERMINAL.  
STYLE- B

DRILLING DETAIL 'B'

HOUSING.  
STYLE- HR

TERMINAL.  
STYLE- B

DRILLING DETAIL 'B'

HOUSING.  
STYLE- C

TERMINAL.  
STYLE- C

DRILLING DETAIL 'D'

NOTES:

1. TERMINAL MUST MEET MOLEX SOLDERABILITY SPEC. No. 152.

MATERIAL:

HOUSING- NYLON, 94V-2, COLOUR- NATURAL  
TERMINAL- PHOS. BR, PLATING-(P902)  
HOT TIN DIP 1-2.5um (.000040"- .000100")



LEAD FREE CONVERSION EC No. E2004-0792 DRAWN: PSHEAHAN 04/03/04 CHK: / / / / APPR: / / / / REV: ZA	QUALITY SYMBOLS	GENERAL TOLERANCES: (UNLESS SPECIFIED)		SCALE	DESIGN UNITS	DIMENSIONS:		SHT	REV
	MAJOR	mm      INCH		1:1	mm      INCH	mm	mm		
	CRITICAL	±0.      ±.		1:1	mm      INCH	mm	mm		
		±0.      ±.		1:1	mm      INCH	mm	mm		
	ANGULAR: ± 1/2°		DRAWN BY & DATE		THIRD ANGLE PROJECTION		TITLE: CONNECTOR, K-K (3.96)/.156		
	DRAFT WHERE APPLICABLE MUST REMAIN WITHIN DIMENSIONS		G. HART 24/11/82		CHECKED BY & DATE		WITH OR WITHOUT LOCKING		
			M. GOONEY 26/11/98		APPROVED BY & DATE		WITH P.C. TAIL TERMINALS		
			MWILHITE 26/11/98		MATERIAL NO.		MOLEX INCORPORATED		
			CAD FILENAME		DRAWING NO.		SEE CHART		
			SE32154.DGN		SDAE-3215-***N***		4 OF		
THIS DRAWING CONTAINS INFORMATION THAT IS PROPRIETARY TO MOLEX INCORPORATED AND SHOULD NOT BE USED WITHOUT WRITTEN PERMISSION.								SHEET NO.	
								C	