

**PLEASE CHECK WWW.MOLEX.COM FOR LATEST PART INFORMATION**

**Part Number:** [0850130036](#)  
**Status:** **Active**  
**Overview:** [din\\_41612](#)  
**Description:** 2.54mm (.100") Pitch DIN 41612 Header, Through Hole, Vertical, Style R Reverse, 0.6µm (24µ") Selective Gold (Au), 96 Circuits, Lead free

**Documents:**

[3D Model](#) [Product Specification PS-85013-0001 \(PDF\)](#)  
[Drawing \(PDF\)](#) [RoHS Certificate of Compliance \(PDF\)](#)

**Agency Certification**

CSA LR19980  
 UL E29179

**General**

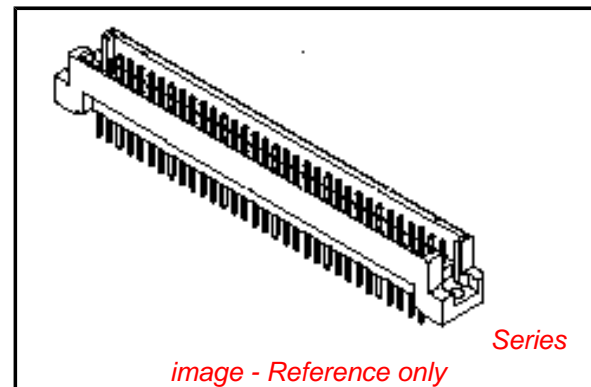
Product Family Backplane Connectors  
 Series [85013](#)  
 Application Backplane  
 Component Type PCB Header  
 Overview [din\\_41612](#)  
 Product Name IEC 603-2/DIN 41612  
 Style R

**Physical**

Circuits (Loaded) 96  
 Circuits (maximum) 96  
 Circuits Detail Rows A, B, & C  
 Durability (mating cycles max) 400  
 First Mate / Last Break No  
 Flammability 94V-0  
 Guide to Mating Part No  
 Keying to Mating Part Yes  
 Number of Columns 32  
 Number of Pairs Open Pin Field  
 Number of Rows 3  
 Orientation Vertical  
 PC Tail Length (in) 0.177 In  
 PC Tail Length (mm) 4.50 mm  
 PCB Locator No  
 PCB Retention Yes  
 PCB Thickness Recommended (in) 0.062 In  
 PCB Thickness Recommended (mm) 1.60 mm  
 Packaging Type Tray  
 Pitch - Mating Interface (in) 0.100 In  
 Pitch - Mating Interface (mm) 2.54 mm  
 Pitch - Term. Interface (in) 0.100 In  
 Pitch - Term. Interface (mm) 2.54 mm  
 Plating min: Mating (µin) 24  
 Plating min: Mating (µm) 0.6  
 Surface Mount Compatible (SMC) No  
 Temperature Range - Operating -55°C to +125°C

**Electrical**

Current - Maximum per Contact 1A  
 Data Rate 622.0 Mbps  
 Voltage - Maximum 1000V (RMS)



**EU RoHS**

**ELV and RoHS Compliant**  
**REACH SVHC**  
 Not Reviewed  
**Halogen-Free Status**  
 Not Reviewed

**China RoHS**



**Need more information on product environmental compliance?**

Email [productcompliance@molex.com](mailto:productcompliance@molex.com)  
 For a multiple part number RoHS Certificate of Compliance, [click here](#)

Please visit the [Contact Us](#) section for any non-product compliance questions.

**Search Parts in this Series**

[85013Series](#)

**Mates With**

[85042](#) DIN 41612 Receptacle . [85052](#) DIN 41612 Header

**Material Info**

**Reference - Drawing Numbers**

Product Specification

Sales Drawing

PS-85013-0001

SD-85013-0036, SDA-85013-0001, SDA-85013-0036

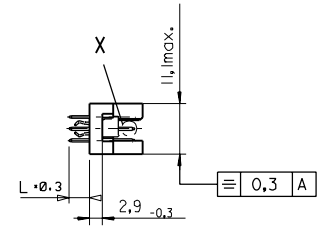
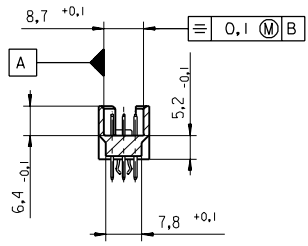
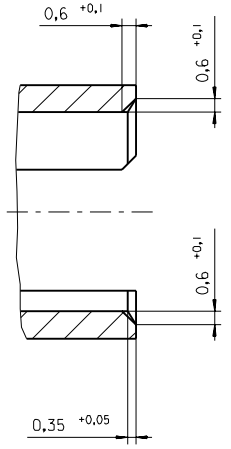
This document was generated on 05/17/2010

**PLEASE CHECK [WWW.MOLEX.COM](http://WWW.MOLEX.COM) FOR LATEST PART INFORMATION**

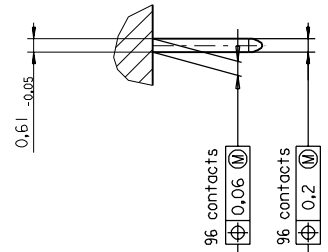


PART NO.  
DWG. NO.

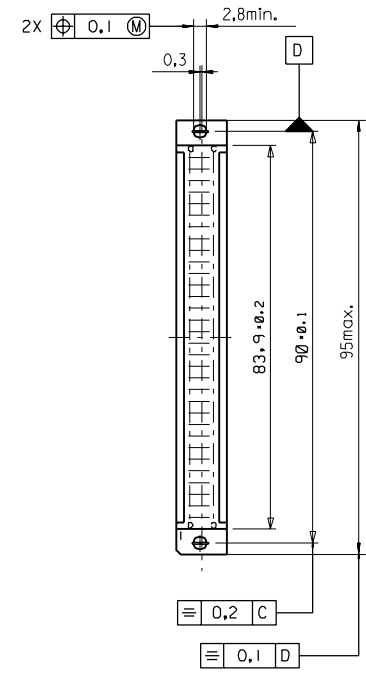
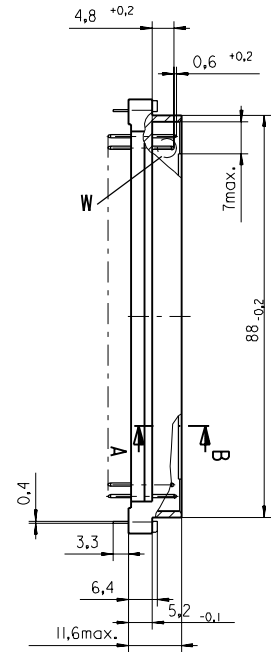
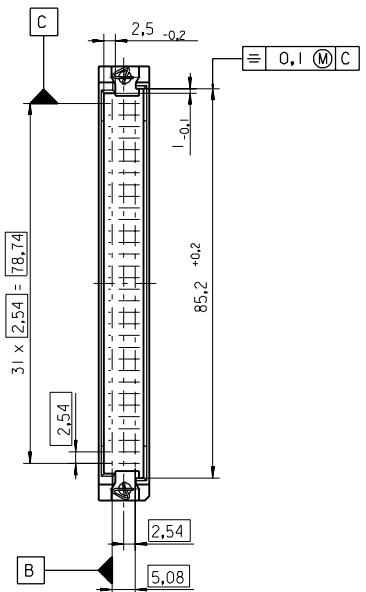
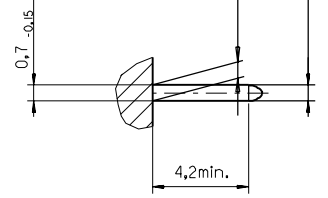
Section A - B  
5:1



View X  
5:1



View W  
5:1



|   |          |                           |  |   |      |
|---|----------|---------------------------|--|---|------|
| FIRST ANGLE PROJECTION  |          | REVISE ONLY ON CAD SYSTEM |  | SH.   | REV. |
| UNLESS OTHERWISE SPECIFIED<br>TOLERANCES: ANGULAR ±2°<br>INCH METRIC                    | DRWG BY  | SIGN                      | CAD/CAM PROJECT NAME   | THIS DRAWING CONTAINS INFORMATION THAT IS PROPRIETARY TO MOLEX INC. & SHOULD NOT BE USED WITHOUT WRITTEN PERMISSION |      |
|   | Ca       |                           | 85013000<br>611  |   |      |
| 3 PLACE ± . ±   | CHK'D BY | SIGN                      | TITLE  |   |      |
| 2 PLACE ± . ±   | KN       |                           | 96 pos. Male connector<br>acc. DIN 41612 Style R<br>Dimensions |   |      |
| 1 PLACE ± . ±   | APP'D BY | SIGN                      | MOLEX EUROPE   |   |      |
| DRAFT WHERE APPLICABLE MUST<br>REMAIN WITHIN DIMENSIONS                                 | SCALE    |                           | SHEET NO. DATE   |   |      |
| DESIGN DIMENSION <input checked="" type="checkbox"/> MM<br><input type="checkbox"/> IN. | : 1      |                           | 1 OF 95/06/07  |   |      |
| EQUIVALENT DIMENSION <input type="checkbox"/> MM<br><input type="checkbox"/> IN.        |          | PART NO.                  |  | DWG NO.   | SIZE |
| IF TWO DIMENSIONS ARE SHOWN THE UPPER IS<br>THE DESIGN DIMENSION, LOWER IS SECONDARY    |          |                           | SDA-85013-0001   |   | B    |

