

PLEASE CHECK WWW.MOLEX.COM FOR LATEST PART INFORMATION

Part Number: [0913381003](#)
Status: **Active**
Overview: [rast 5 connector system](#)
Description: 5.00mm (.197") Pitch Appli-Mate RAST 5 Female Connector, Vertical, 1 Circuit, Grey, Tin (Sn) Plating

Documents:

[Drawing \(PDF\)](#) [RoHS Certificate of Compliance \(PDF\)](#)

General

| | |
|-------------------------|---|
| Product Family | IDT and Solder Connectors |
| Series | 91338 |
| Crimp Quality Equipment | Yes |
| Overview | rast 5 connector system |
| Product Name | RAST 5 |

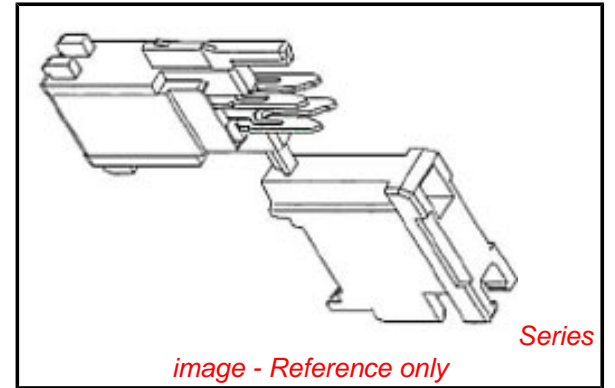
Physical

| | |
|--------------------------------|-----------------|
| Circuits (Loaded) | 1 |
| Color - Resin | GREY |
| Durability (mating cycles max) | 10 |
| Gender | Female |
| Glow-Wire Compliant | No |
| Lock to Mating Part | None |
| Material - Metal | Phosphor Bronze |
| Material - Plating Mating | Tin |
| Material - Plating Termination | Tin |
| Material - Resin | Nylon |
| Number of Rows | 1 |
| Packaging Type | Tray |
| Panel Mount | No |
| Pitch - Mating Interface (in) | 0.197 In |
| Pitch - Mating Interface (mm) | 5.00 mm |
| Plating min: Mating (µin) | 200 |
| Plating min: Mating (µm) | 5 |
| Plating min: Termination (µin) | 200 |
| Plating min: Termination (µm) | 5 |
| Stackable | Yes |
| Temperature Range - Operating | -20°C to +85°C |
| Termination Interface: Style | IDT or Pierce |
| Wire Size AWG | 18, 20 |

Electrical

| | |
|-------------------------------|---------|
| Current - Maximum per Contact | 10A, 6A |
| Voltage - Maximum | 250V |

Material Info



EU RoHS **China RoHS**

Compliance Status

Not Reviewed

REACH SVHC

Not Reviewed

Halogen-Free

Status

Not Reviewed

Need more information on product environmental compliance?

Email productcompliance@molex.com
 For a multiple part number RoHS Certificate of Compliance, [click here](#)

Please visit the [Contact Us](#) section for any non-product compliance questions.

Search Parts in this Series

[91338Series](#)

Mates With

Appli-Mate RAST 5.0 Header [90858](#) , [90879](#)

Application Tooling | FAQ

Tooling specifications and manuals are found by selecting the products below. Crimp Height Specifications are then contained in the Application Tooling Specification document.

Global

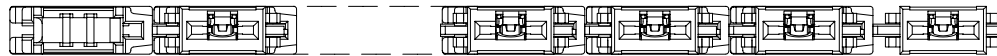
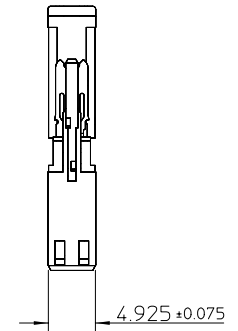
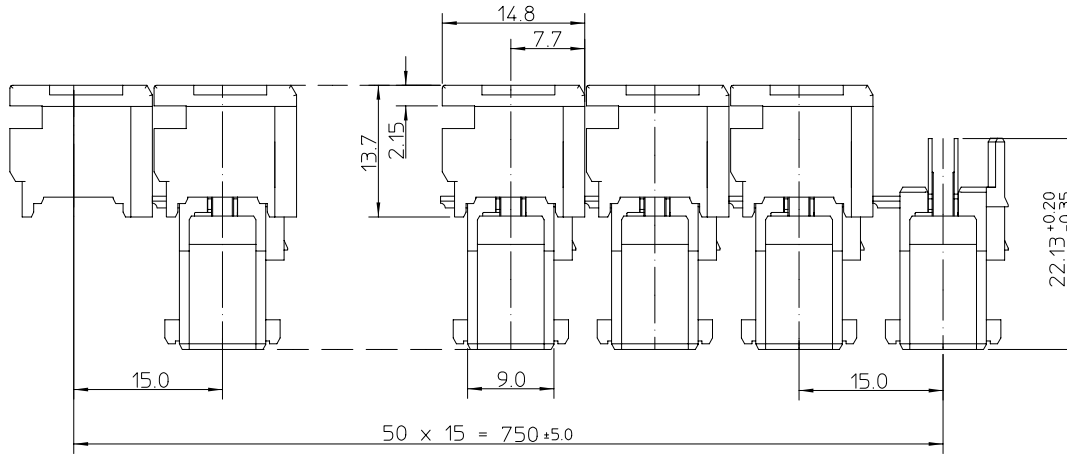
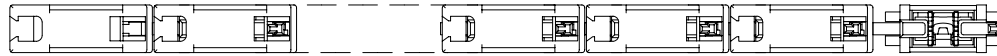
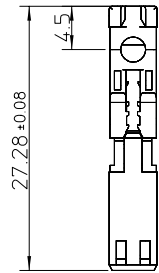
| Description | Product # |
|-------------|-----------|
|-------------|-----------|

| | |
|---|----------------------------|
| RAST 5.0 Semi-Automatic Terminator Machine for Appli-Mate™ Connector 6 and 10 AMP | 0623006300 |
| Manual Arbor Press, RAST 5.0 | 0622017500 |

This document was generated on 05/27/2010

PLEASE CHECK WWW.MOLEX.COM FOR LATEST PART INFORMATION

PART NO. SD-91338-006
DWG. NO. SD-91338-006



NOTES:

- MATERIALS:
HOUSING: POLYAMIDE (PA66) UL 94V-2
COLOUR: SEE TABLE
TERMINAL: PHOSPHOR BRONZE, 0.4 REF THICK
- FINISHES: TERMINAL- 5µm MIN PURE Sn ALL OVER
- PRODUCT CONFORMS TO SPECIFICATION PS-99020-0037
- NO. OF CONNECTORS PER TRAY: 2400
NO. OF CONNECTORS PER BOX: 7200

| PART NO. | COLOUR |
|------------|---------|
| 91338-1001 | NATURAL |
| 91338-1002 | BLUE |
| 91338-1003 | GREY |
| 91338-1004 | YELLOW |
| 91338-1005 | GREEN |
| 91338-1006 | BLACK |
| 91338-1007 | ORANGE |

original release
EC No. E1999-0639
DRWN: LK 28/06/99
CHK:
APPR:

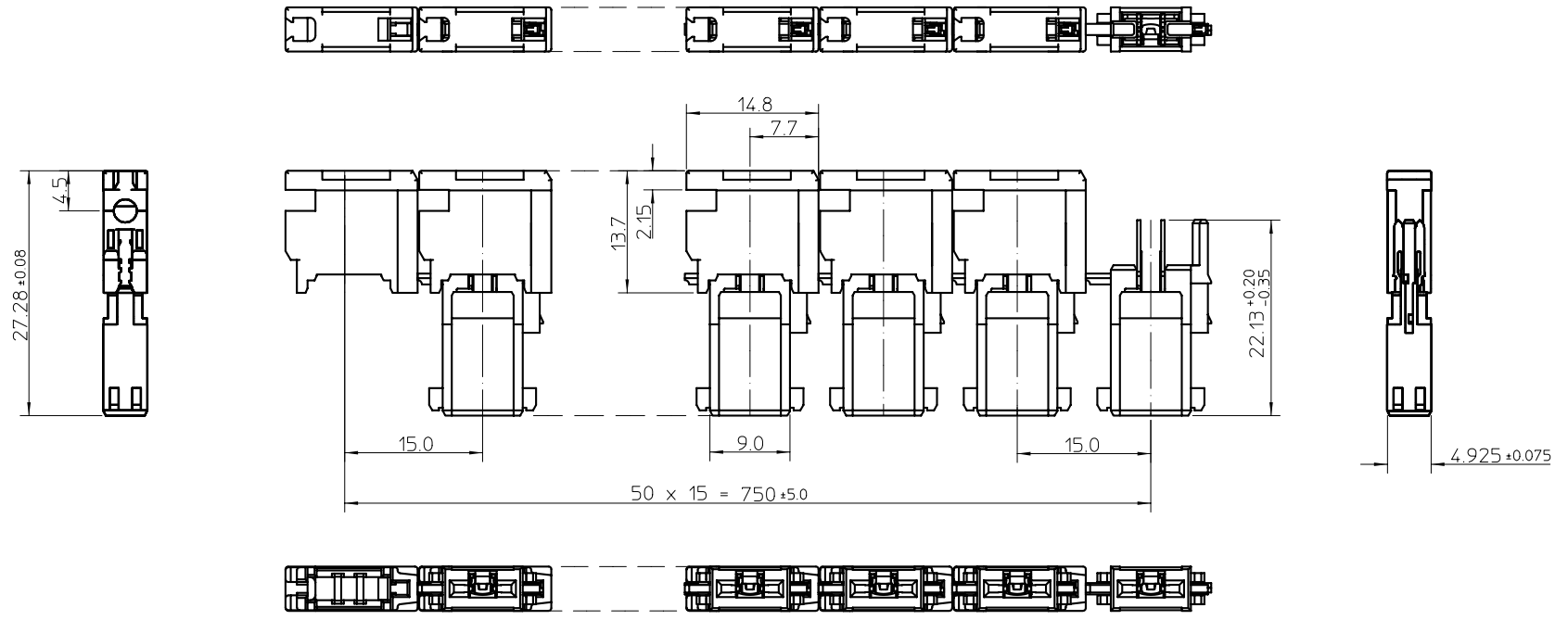
DESCRIPTION
MAJOR
CRITICAL

QUALITY SYMBOLS
GENERAL TOLERANCES: (UNLESS SPECIFIED)
4 PLACES ±---
3 PLACES ±---
2 PLACES ±0.05
1 PLACE ±0.10
ANGULAR: ± 1/2°
DRAFT WHERE APPLICABLE MUST REMAIN WITHIN DIMENSIONS

SCALE 2:1
DESIGN UNITS mm INCH
DRAWN BY & DATE cconlon 99/06/28
CHECKED BY & DATE P.WHITE 99/06/28
APPROVED BY & DATE MWILHITE 1/07/99
CAD FILENAME

DIMENSIONS: mm INCH mm ONLY
THIRD ANGLE PROJECTION
TITLE: RAST 5 1CCT INDIRECT FEMALE
MATERIAL NO. SEE CHART
DRAWING NO. SD-91338-006
SHEET NO. 1 of 1
THIS DRAWING CONTAINS INFORMATION THAT IS PROPRIETARY TO MOLEX INCORPORATED AND SHOULD NOT BE USED WITHOUT WRITTEN PERMISSION

PART NO. SD-91338-006
DWG. NO. SD-91338-006



- NOTES:
- MATERIALS:
HOUSING: POLYAMIDE (PA66) UL 94V-2
COLOUR: SEE TABLE
TERMINAL: PHOSPHOR BRONZE, 0.4 REF THICK
 - FINISHES: TERMINAL- 5µm MIN PURE Sn ALL OVER
 - PRODUCT CONFORMS TO SPECIFICATION PS-99020-0037
 - NO. OF CONNECTORS PER TRAY: 2400
NO. OF CONNECTORS PER BOX: 7200

| PART NO. | COLOUR |
|------------|---------|
| 91338-1001 | NATURAL |
| 91338-1002 | BLUE |
| 91338-1003 | GREY |
| 91338-1004 | YELLOW |
| 91338-1005 | GREEN |
| 91338-1006 | BLACK |
| 91338-1007 | ORANGE |

| | | | | | | | | | | |
|---|--------------------------------------|---|--------------------------------------|--|--|--|------|--|------|-----------|
| original release EC No. E1999-0639 DRWN: LK 28/06/99 CHK: APPR: | QUALITY SYMBOLS MAJOR CRITICAL | GENERAL TOLERANCES: (UNLESS SPECIFIED) | SCALE 2:1 | DESIGN UNITS <input checked="" type="checkbox"/> mm <input type="checkbox"/> INCH | THIRD ANGLE PROJECTION | DIMENSIONS: <input type="checkbox"/> mm <input type="checkbox"/> INCH <input checked="" type="checkbox"/> mm ONLY | | SHT | REV | |
| | | 4 PLACES ±--- 3 PLACES ±--- 2 PLACES ±0.05 1 PLACE ±0.10 | mm | INCH | | ±--- | ±--- | ±--- | ±--- | |
| A | REV | ANGULAR: ± 1/2° | DRAWN BY & DATE ccconlon 99/06/28 | CHECKED BY & DATE P.WHITE 99/06/28 | APPROVED BY & DATE MWILHITE 1/07/99 | TITLE RAST 5 1CCT 10A INDIRECT FEMALE | | | | |
| | | DRAFT WHERE APPLICABLE MUST REMAIN WITHIN DIMENSIONS | CAD FILENAME | MATERIAL NO. SEE CHART | | DRAWING NO. SD-91338-006 | | SHEET NO. 1 of 1 | | |
| | | | | | | | | THIS DRAWING CONTAINS INFORMATION THAT IS PROPRIETARY TO MOLEX INCORPORATED AND SHOULD NOT BE USED WITHOUT WRITTEN PERMISSION. | | SIZE B |