

PLEASE CHECK WWW.MOLEX.COM FOR LATEST PART INFORMATION

Part Number: [0359771001](#)
Status: **Planned for Obsolescence**
Overview: [mv396](#)
Description: 3.96mm (.156") Pitch Wire-to-Board Housing, Positive Lock, 10 Circuits, PA Polyamide Nylon 6/6, UL 94V-2, Black, Glow Wire Compatible

Documents:

[3D Model](#) [Product Specification PS-35979-001 \(PDF\)](#)
[Drawing \(PDF\)](#) [RoHS Certificate of Compliance \(PDF\)](#)

Agency Certification

CSA LR19980
 UL E29179

General

Product Family Crimp Housings
 Series [35977](#)
 Overview [mv396](#)
 Product Name MV-396™

Physical

Breakaway No
 Circuits (maximum) 10
 Color - Resin Black
 Flammability 94V-0
 Gender Female
 Glow-Wire Compliant No
 Keying to Mating Part None
 Lock to Mating Part Yes
 Material - Resin Nylon
 Number of Rows 1
 Packaging Type Bag
 Panel Mount No
 Pitch - Mating Interface (in) 0.156 In
 Pitch - Mating Interface (mm) 3.96 mm
 Polarized to Mating Part Yes
 Stackable Yes
 Temperature Range - Operating -25°C to +85°C

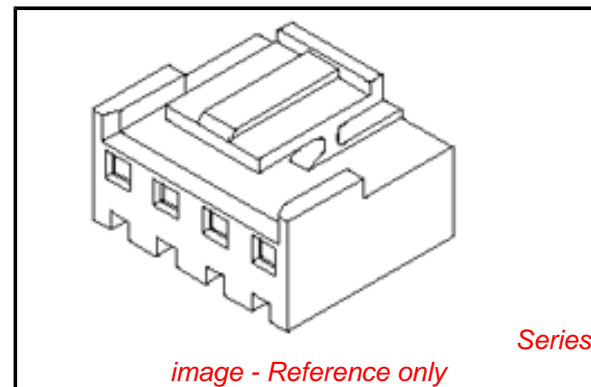
Electrical

Current - Maximum per Contact 7A

Material Info

Reference - Drawing Numbers

Packaging Specification PK-35977-001
 Product Specification PS-35979-001



EU RoHS

ELV and RoHS Compliant
REACH SVHC
 Not Reviewed
Halogen-Free Status
Not Reviewed

China RoHS



Need more information on product environmental compliance?

Email productcompliance@molex.com
 For a multiple part number RoHS Certificate of Compliance, [click here](#)

Please visit the [Contact Us](#) section for any non-product compliance questions.

Search Parts in this Series

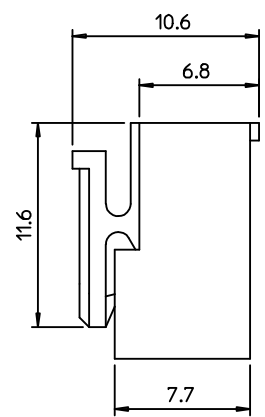
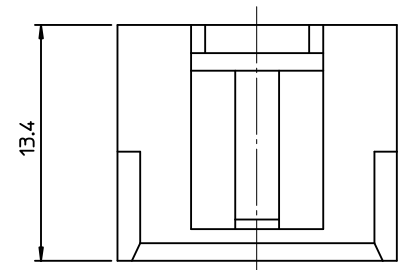
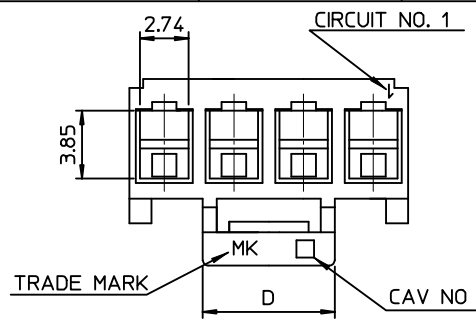
[35977Series](#)

Mates With

Wire-to-Board Header [35978](#) , [35979](#)

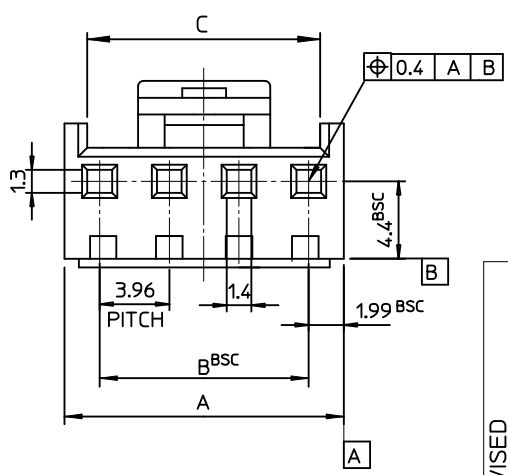
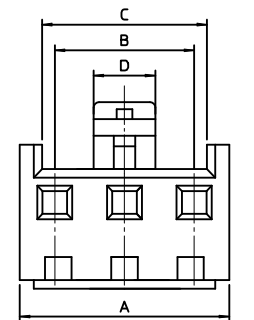
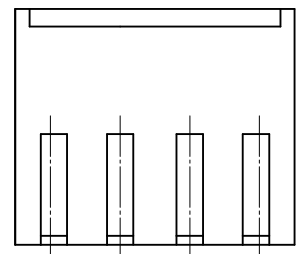
Use With

Wire-to-Board Terminal [35922](#)



NOTES
 1. USED WITH TERMINAL : 35922-9002
 2. MATED WITH HEADER ASS'Y : 35978-**1*(PA66) 35978-**2*(PA66)

LEGEND
 35977-****
 COLOR : 0 - WHITE
 1 - BLACK
 2 - RED
 3 - YELLOW
 4 - BLUE
 MATERIAL 0 : PA66
 CURCUIT NO. (02,03,04...)



19.7	56.88	55.44	59.42	3597715**	35977-15**	15
19.7	52.92	51.48	55.46	3597714**	-14**	14
19.7	48.96	47.52	51.5	3597713**	-13**	13
19.7	45.0	43.56	47.54	3597712**	-12**	12
19.7	41.04	39.6	43.58	3597711**	-11**	11
19.7	37.08	35.64	39.62	3597710**	-10**	10
17.7	33.12	31.68	35.66	3597709**	-09**	9
15.7	29.16	27.72	31.70	3597708**	-08**	8
13.7	25.20	23.76	27.74	3597707**	-07**	7
7.5	21.24	19.80	23.78	3597706**	-06**	6
	17.28	15.84	19.82	3597705**	-05**	5
	13.32	11.88	15.86	3597704**	-04**	4
	9.36	7.92	11.90	3597703**	-03**	3
3.5	5.4	3.96	7.94	3597702**	35977-02**	2
D	C	B	A	MAT'L NO	ENG NO.	CIRCUITS

REVISED EC NO: KOR2009-0028 D DRAWN: JHPARK01 2008/09/23 CHKD: HW YANG 2008/09/23 APPR: YUNSIKKIM 2008/09/23	QUALITY SYMBOLS ▽=0 ▽=0	GENERAL TOLERANCES (UNLESS SPECIFIED) mm INCH 4 PLACES ± --- ± --- 3 PLACES ± --- ± --- 2 PLACES ± --- ± --- 1 PLACE ± 0.2 ± --- ANGULAR ± 2 °	DIMENSION STYLE MM ONLY DRAWN BY: YR.WI DATE: 1999/05/06 CHECKED BY: JH.OH DATE: 1999/05/06 APPROVED BY: CW.LEE DATE: 1999/05/06 MATERIAL NO.	SCALE 3.5:1 DESIGN UNITS METRIC THIRD ANGLE PROJECTION	3.96 PITCH W-T-B CONN. HOUSING MOLEX INCORPORATED SD-35977-001 SHEET NO. 1 OF 01	
	DRAFT WHERE APPLICABLE MUST REMAIN WITHIN DIMENSIONS	SEE TABLE	THIS DRAWING CONTAINS INFORMATION THAT IS PROPRIETARY TO MOLEX INCORPORATED AND SHOULD NOT BE USED WITHOUT WRITTEN PERMISSION			
	SIZE A3					